

NEPEAN RIVER BANK RESTORATION PROJECT

Belgenny to John Peat

Why is Council undertaking efforts to stabilise the Nepean River bank?

To repair damage to the river bank that occurred during the flood events of 2022 and to prevent further erosion, Camden Council will be undertaking bank stabilisation works at three locations along the bike path at Camden.

Where will it be?

The first stage of this work was undertaken on the Nepean River at the southern end of Rotary Cowpasture Reserve, Camden. This work was completed in early 2024.

This second stage of works will repair damage at three locations along the Nepean River between Belgenny Reserve and John Peat Reserve.

What does the Vegetation Management Plan What will the project involve?

The project will include:

- bank stabilisation and erosion control;
- removal of weeds from the project sites;
- planting with local native species from the Endangered Ecological Community of River-Flat Eucalypt Forest to stabilise the bank and provide habitat; and
- maintenance of the plants, including watering as required.

Who is funding these works?

Funding for this project was assisted by NSW Government through its Environmental Trust, and jointly funded by the Australian and New South Wales governments under the Disaster Recovery Funding Arrangements.

How will these works affect you?

The works are expected to start in the week commencing 24 June 2024, with the bank stabilisation works expected to take twelve weeks to complete, weather permitting. For safety reasons, the shared pathway will be closed for the duration of the project. The pathway will be closed north of Belgenny Oval (Peter Avenue) to Chellaston Street, a distance of approximately 850 metres. An identified detour will be in place to users that wish to use it with an approximate length of 1.7 kilometres.

The project will result in minor noise and temporary disruptions to nearby residents while trucks are accessing the site, and while works are being undertaken. All works will occur between 7am and 5pm Monday to Friday and 7am and 1pm on Saturdays, with no work on Sundays.

Who can I contact if I have questions?

If you would like more information about this project or our local waterways, call Council's Major Projects Team on 13 CAMDEN (13 226 336) or email mail@camden.nsw.gov.au.

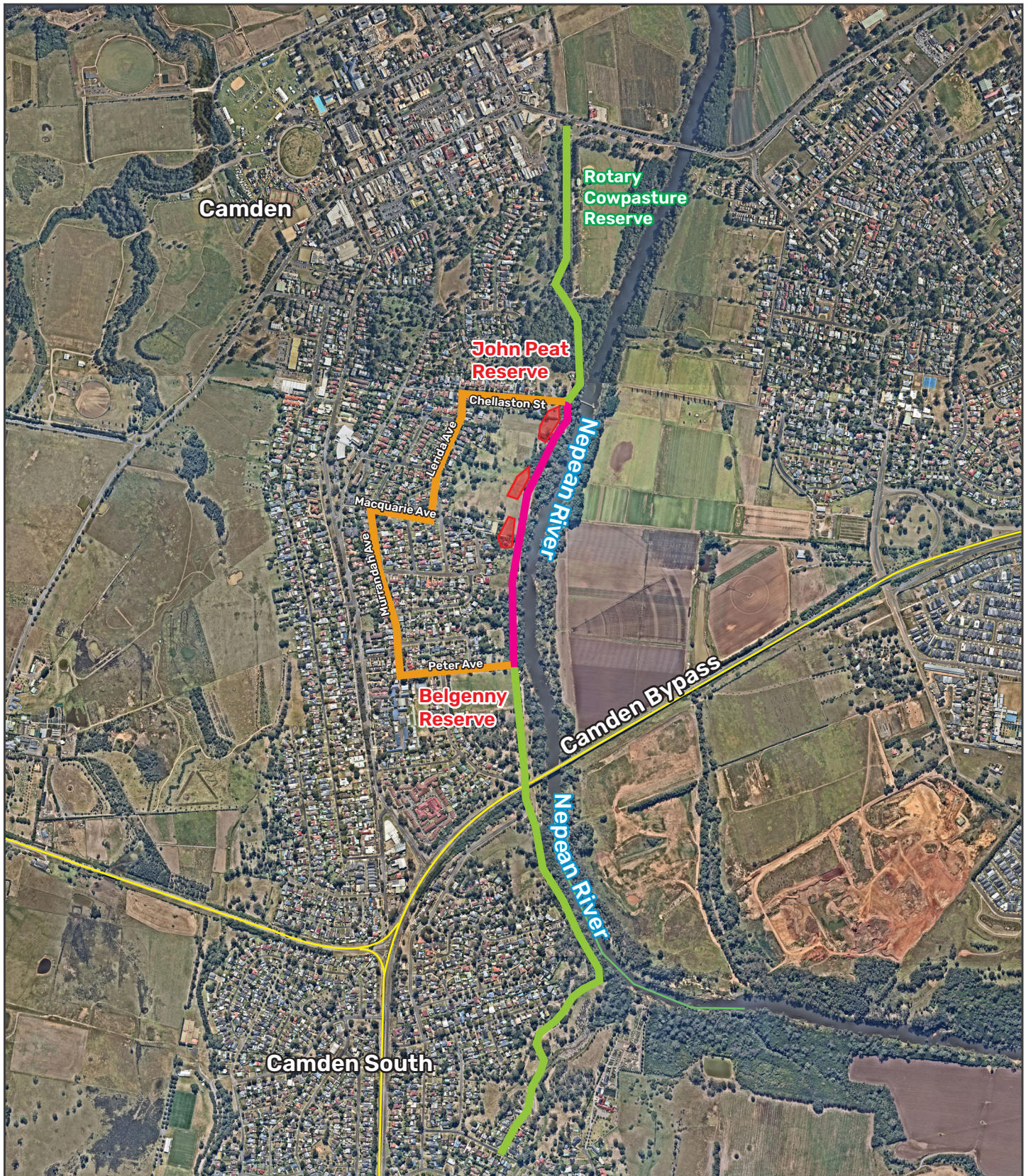


Figure 1. Overall map of the area

- Closed section of shared pathway
- Open sections of shared pathway
- Detour - 1.7kms
- Three project locations