



# The Hitching Post Exhibition

FEBRUARY 2024

*Welcome to the Exhibition*

A century ago, hitching posts were peppered throughout the township of Camden for the purpose of tethering horses. Replicas of the historic posts are located in front of the Alan Baker Art Gallery and in Larkin Place. Today, these posts are used as the support for public artwork created by local artists and school children. "The Hitching Post Exhibition" presents the original artwork from these hitching posts for the public to enjoy once more.

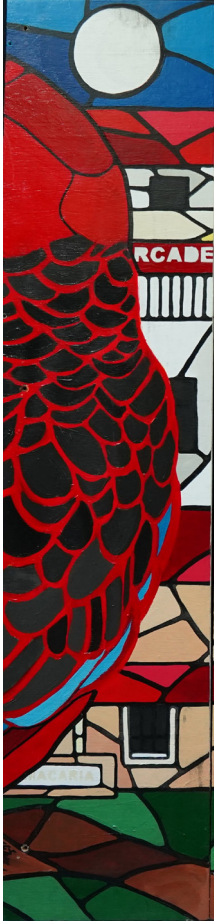


## By Roy Murray

2019

Paint on Plywood, 25 x 110 cm (per each board)

Designed and painted by Aboriginal artist Roy Murray, this work was displayed as a part of Camden Council's 2019 NAIDOC week celebrations. The work which was displayed at the entrance of the Alan Baker Art Gallery, features animals native to Australia such as the platypus and kangaroo. Of note is the depiction of the lyre bird, which is the totem of the Dharawal people.

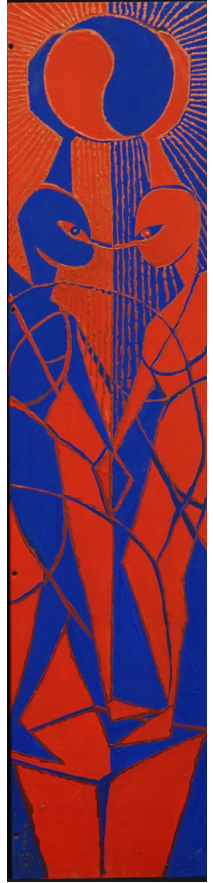
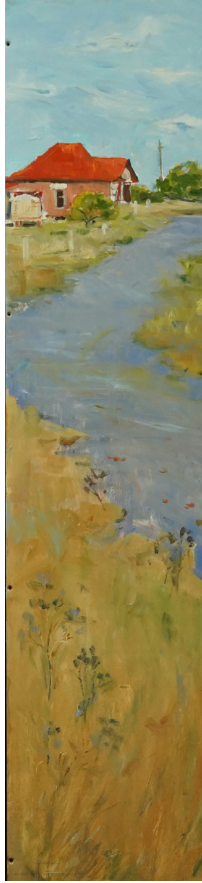
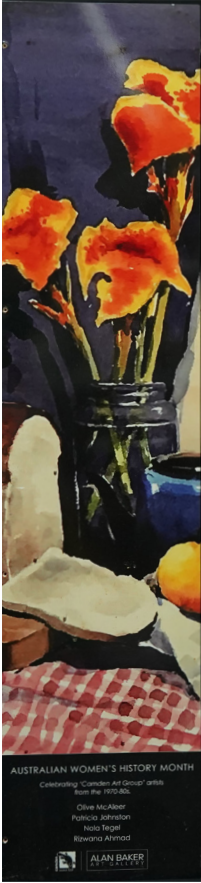


## By Nicolas Silva

2022

Paint on Plywood, 25 x 110 cm (per each board)

Local artist Nicolas Silva created this colourful work for display at the entrance of the Alan Baker Art Gallery. The work features historic buildings of Camden, including St John's Church and the Camden Courthouse. It also depicts the stunning Crimson Rosella, an Australian native bird found in the area.





**By Olive McAleer, Patricia Johnston, Nola Tegel and Rizwana**

**Ahmad**

2020

Paint on Plywood, 25 x 110 cm (per each board)

This series of work features notable local female artists who were a part of "Camden Art Group." It was put on display in celebration of Australian Women's History month. One panel features an image taken from one of Olive McAleer's vibrant still life watercolours. Patricia Johnston's painting offers a sentimental streetscape beneath the spire of St John's church. Nola Tegel's work captures a typical Australian home. Rizwana Ahmad's vibrant semi-abstract painting is a visual exploration of gender equality.

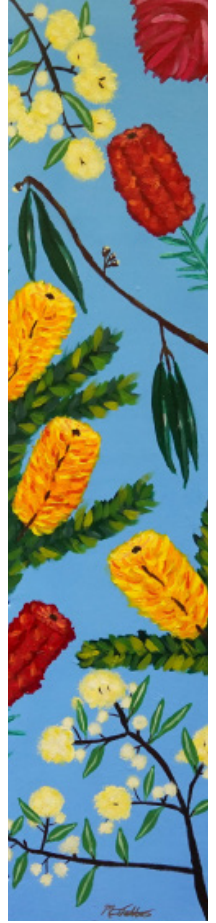
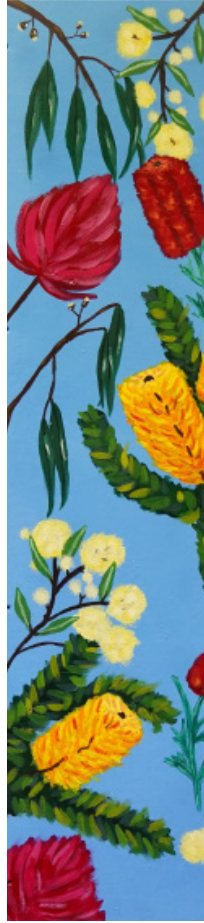


## By **Philomena Camilleri**

2020

Paint on Plywood, 25 x 110 cm (per each board)

This work is the result of a in-house competition among the staff at the Alan Baker Art Gallery to create new work for the gallery hitching post. Artist Philomena Camilleri created a stunning landscape of Camden, over which colourful hot air balloons fly.

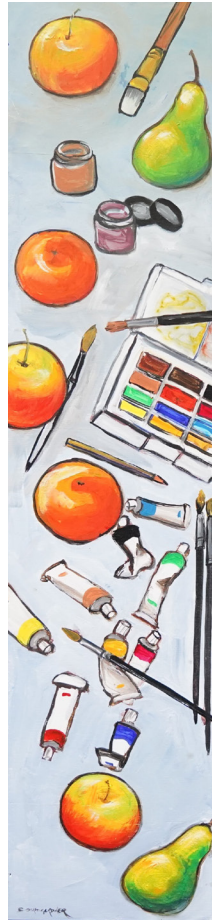


## By Misty Lee Talbot

2020

Paint on Plywood, 25 x 110 cm (per each board)

This work is the result of an in-house competition among the staff at the Alan Baker Art Gallery to create new work for the gallery hitching post. Artist Misty Lee Talbot painted stunning Australian natives, including eucalyptus leaves, red waratahs, red and yellow banksia and yellow wattle, which are cast over a clear sky.

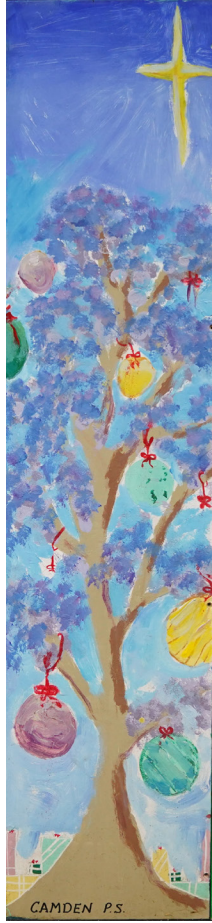
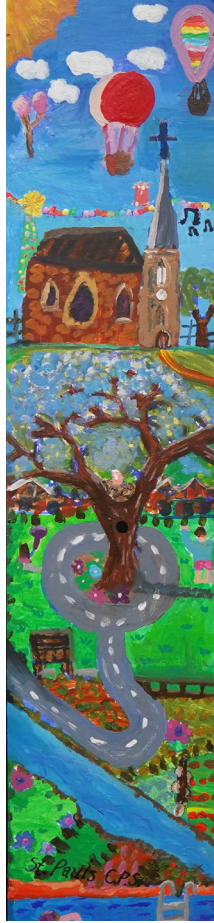
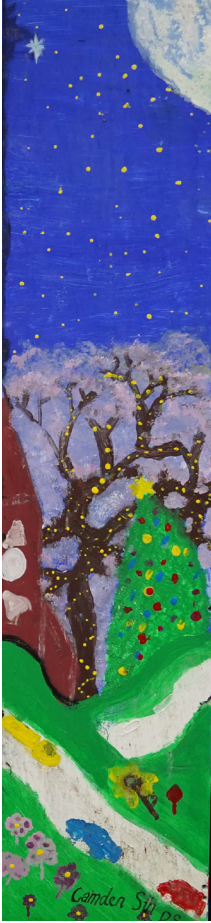


## By Catherine Stait-Gardner

2023

Paint on Plywood, 25 x 110 cm (per each board)

This artwork was painted live in the streets of Camden as part of a Camden Council public art display. Artist Catherine Stait-Gardner chose to create a still life featuring objects and materials used in the Alan Baker Art Gallery Art After School workshops.





**By Camden South Public School, St Paul's Camden, Camden  
Public School and Mawarra Public School students**

2019

Paint on Plywood, 25 x 110 cm (per each board)

These works were created collaboratively by students from our local schools, in celebration of Christmas in Camden. Featuring Camden iconography including our Jacarandas, St John's Church and even scenes from 'Light up Camden', the students' bright colours certainly represent our township in December well.



## **By Art After School workshop participants**

2020

Paint on Plywood, 25 x 110 cm (per each board)

These works were created collaboratively by students in the Alan Baker Art Gallery's Art After School workshops, in celebration of Christmas in Camden. Featuring twinkling lights hanging from our Jacarandas, along with our streets come Christmas night, the bright festive display captures the spirit of Christmas in Camden.

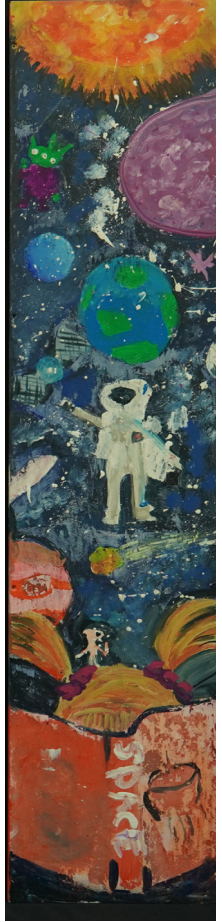
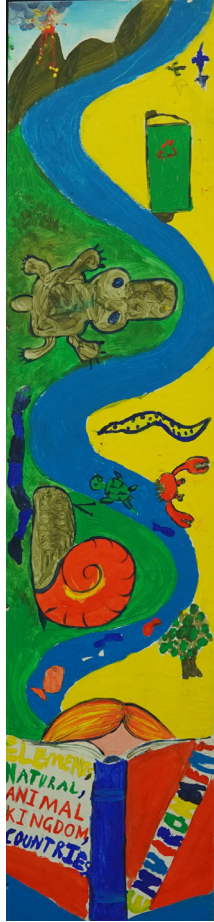


## **By St Paul's Catholic School students and Nicolas Silva**

2022

Paint on Plywood, 22.5 x 85 (per each board)

Local artist Nicolas Silva guided several workshops of St Paul's students to create brightly coloured works for display in Larkin Place. Four students were chosen from each school year to take part in the workshop. The works highlight iconic features of Camden, including its purple jacaranda trees and the hot air balloons often spotted flying over its fields.

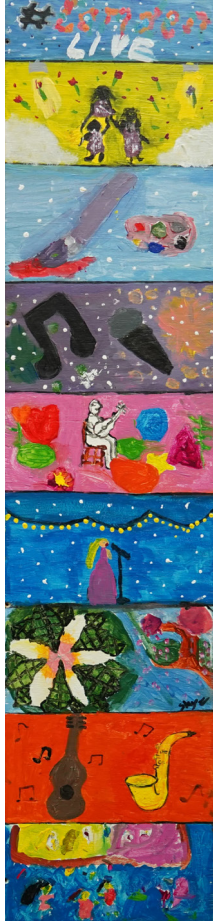
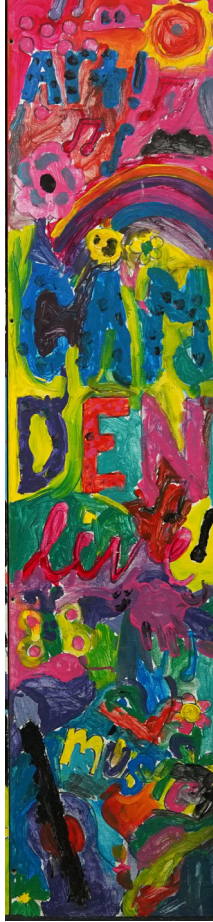


## By Camden Public School students

2019

Paint on Plywood, 25 x 110 cm (per each board)

This series of work was created by students at Camden Public School in their newly opened Art Hub. The students created four boards that each represented a different subject area. These were space, culture, history, and the environment. For each subject, related visual images spill over the board in bright colours.



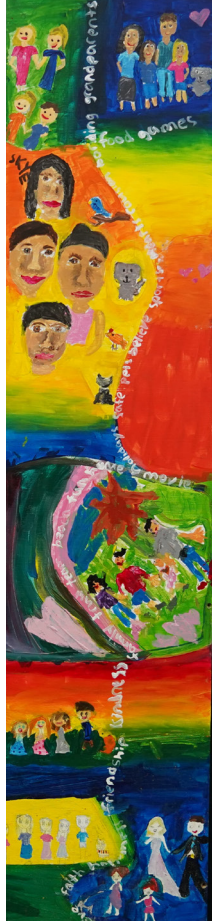


## **By Art After School workshop at the Alan Baker Art Gallery**

2019

Paint on Plywood, 25 x 1100 cm (per each board)

These works were created by young locals during the Alan Baker Art Gallery Art After School program, in celebration of Camden Live. Camden Live is a festival which includes live art, busking and artworks displayed on the balustrades, bins and bus shelters throughout the town.



## **By Art After School workshop participants**

2021

Paint on Plywood, 25 x 110 cm (per each board)

These works were created by students in the Alan Baker Art Gallery's Art After School workshops, where they were tasked with depicting what they loved in celebration of Family Week. Bright colours and fun family scenes dominate the boards.



Cultural Fusion is supported by the NSW Government through Create NSW.

