

THE TIME IS NOW

Camden's State and Federal Government
Election Priorities

2025-2027



ACKNOWLEDGMENT OF COUNTRY



Council acknowledge that the Camden LGA is situated on the sacred Traditional Lands and Waterways of the Dharawal peoples. We also recognise surrounding Dharug and Gundungurra peoples that may have connections to these lands. We pay our respects to Elders from the past, present, and emerging, and to all Aboriginal and Torres Strait Islander peoples on these lands.

MESSAGE FROM THE MAYOR



Camden is at a pivotal moment in its growth! With thousands of new residents joining our community each year, it is essential to not only meet the demands of being Australia's fastest growing LGA, but also to leverage opportunities we have to enhance growth and unlock housing supply.

Transformative transport projects, such as the North-South Metro Line and South West Rail Link Extension, will be key to ensuring seamless connectivity to and from growing centres. Coupled with the Western Sydney Rapid Bus Project and critical road upgrades, these initiatives will improve mobility options for residents, workers, and businesses, making travel safer and more efficient across the region, as well as helping address the social challenges that accompany Camden's rapid growth.

As Camden's young population continues to expand, there is an urgent need for additional schools and expanded healthcare services. Government investment in schools, education and healthcare will provide vital support, helping our community thrive and meet future challenges.

I call on the State and Federal Government to invest strategically in Camden's infrastructure and health and education services. Together we can create a prosperous, connected, and sustainable future for Camden, Macarthur and South West Sydney. Council is committed to working collaboratively to secure the outcomes our residents deserve and ensure our region thrives for generations to come.

Ashleigh Cagney
Mayor of Camden



THE TIME IS NOW

Camden's Australian and NSW Government Election Priorities 2025-2027

Published 2025

Acknowledgements

Council acknowledges and extends appreciation to all contributors.

Availability

The Time is Now Camden's Australian and NSW Government Election Priorities is available on Council's website: www.camden.nsw.gov.au/advocacy

Copyright

All information, graphics and photographs are copyright of Camden Council unless otherwise noted. The content is protected by Australian and International Copyright and Trademark laws.

For further information contact

✉ Camden Council
70 Central Avenue
Oran Park NSW 2570

☎ 13 22 63

✉ mail@camden.nsw.gov.au
advocacy@camden.nsw.gov.au

🌐 www.camden.nsw.gov.au/advocacy

COVER IMAGE: Getty images

A CALL FOR ACTION

Camden is Australia's fastest growing local government area. Our growth is set to continue with more than a quarter of a million people calling Camden home by 2046, an increase of over 80%. With this rapid growth comes both challenges and opportunities for our community.

Demands on local infrastructure and services are intensifying, heavy reliance on cars and increasing traffic, combined with inadequate public transport and a growing jobs deficit is impacting the quality of life in Camden.

Council cannot achieve everything for our growing community alone. There is an opportunity for the NSW and Australian Governments to demonstrate their ongoing commitment to the residents of Camden and South West Sydney by acknowledging our current and future transport, infrastructure, education and healthcare needs.

CAMDEN'S PRIORITIES

- Provision of Rail Services including the full North South Metro Line connection between Macarthur and Bradfield
- Enhancing our connectivity with key road infrastructure
- Delivering the Western Sydney Rapid Bus Project
- Meeting the current and future demand for schools and education
- A strategic approach to healthcare and healthy communities

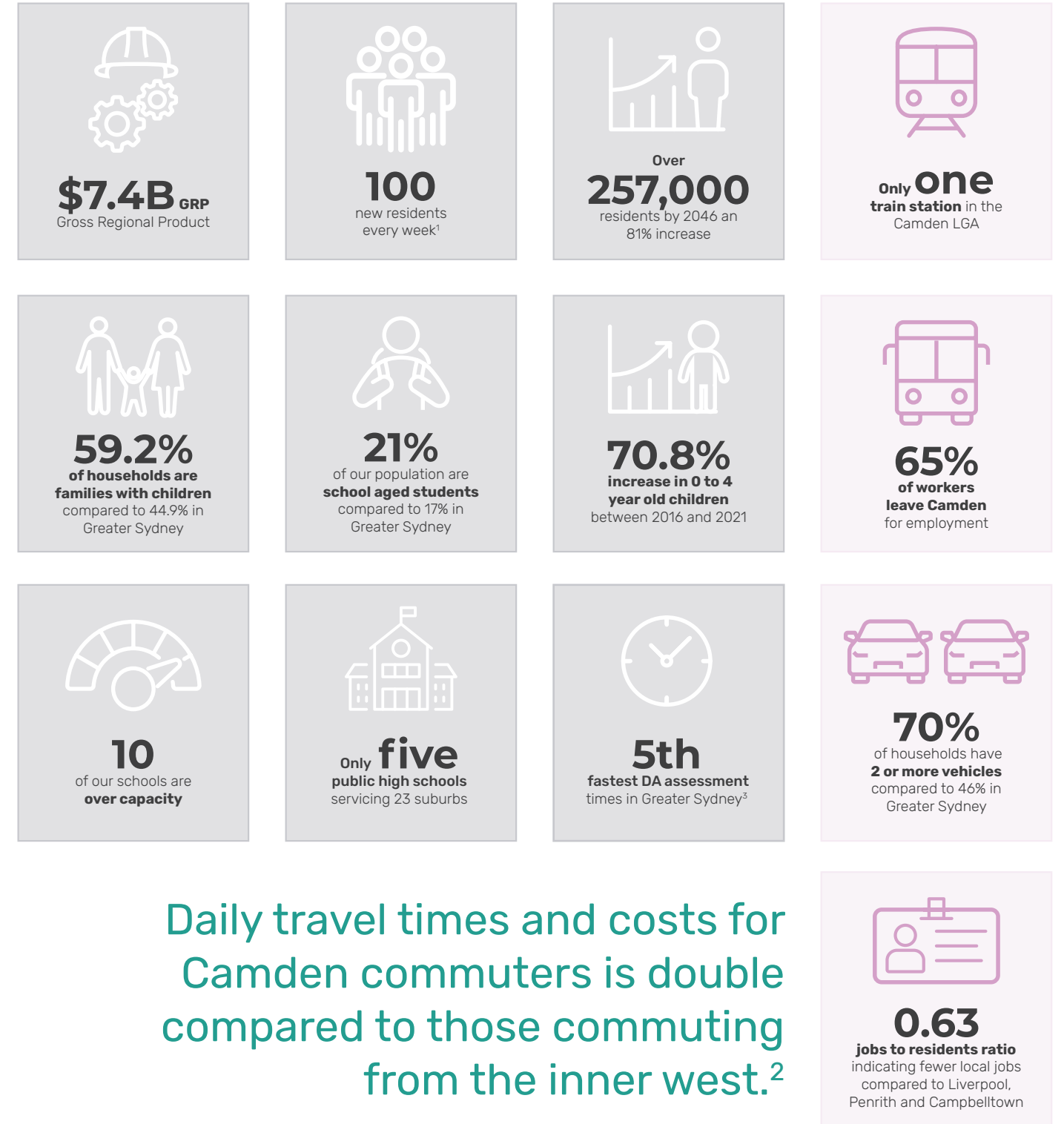
Investment in these priorities will unlock employment opportunities for our community and improve access to a skilled workforce for business and industry. In addition, improved transport infrastructure will reduce emissions and reliance on vehicles in Camden, helping the region move towards net zero.

Camden can play a key role in supporting government objectives to unlock quality and affordable housing supply. Our rapid rate of growth and fast turn around on development applications can be leveraged to create a diverse, vibrant and well connected community.

Ahead of the 2025 and 2027 Australian and NSW Government Elections, Camden Council is calling for continued support, urging decision-makers to prioritise the critical infrastructure and service needs of our rapidly growing region. By working in partnership with Council and investing in our priorities, Camden and surrounds can realise the potential that comes with rapid growth, and being in close proximity to the once in a generation investment in the new Western Sydney International Airport.

The time is now - Camden demands urgent investment in critical infrastructure, education and healthcare to support the fundamental wellbeing of our community.

WHY CAMDEN?



Reference: All statistics are from .id (informed decisions) economic profile unless otherwise specified - <https://economy.id.com.au/camden>
¹Camden Council 2024 ²National Growth Area Alliance ³NSW Department of Planning

CAMDEN'S PRIORITIES

ESSENTIAL RAIL SERVICES



- Southern Extension of Sydney Metro WSA North South Line - Macarthur to Bradfield via Narellan and Oran Park
- South West Rail Link - Leppington to Bradfield



WESTERN SYDNEY RAPID BUS



CRITICAL ROAD INFRASTRUCTURE

- Camden Bypass Extension
- Spring Farm Parkway Extension - Stage 2
- Leppington Road Network
- Camden Valley Way Upgrade
- Raby Road Upgrade
- Rickard Road Upgrade

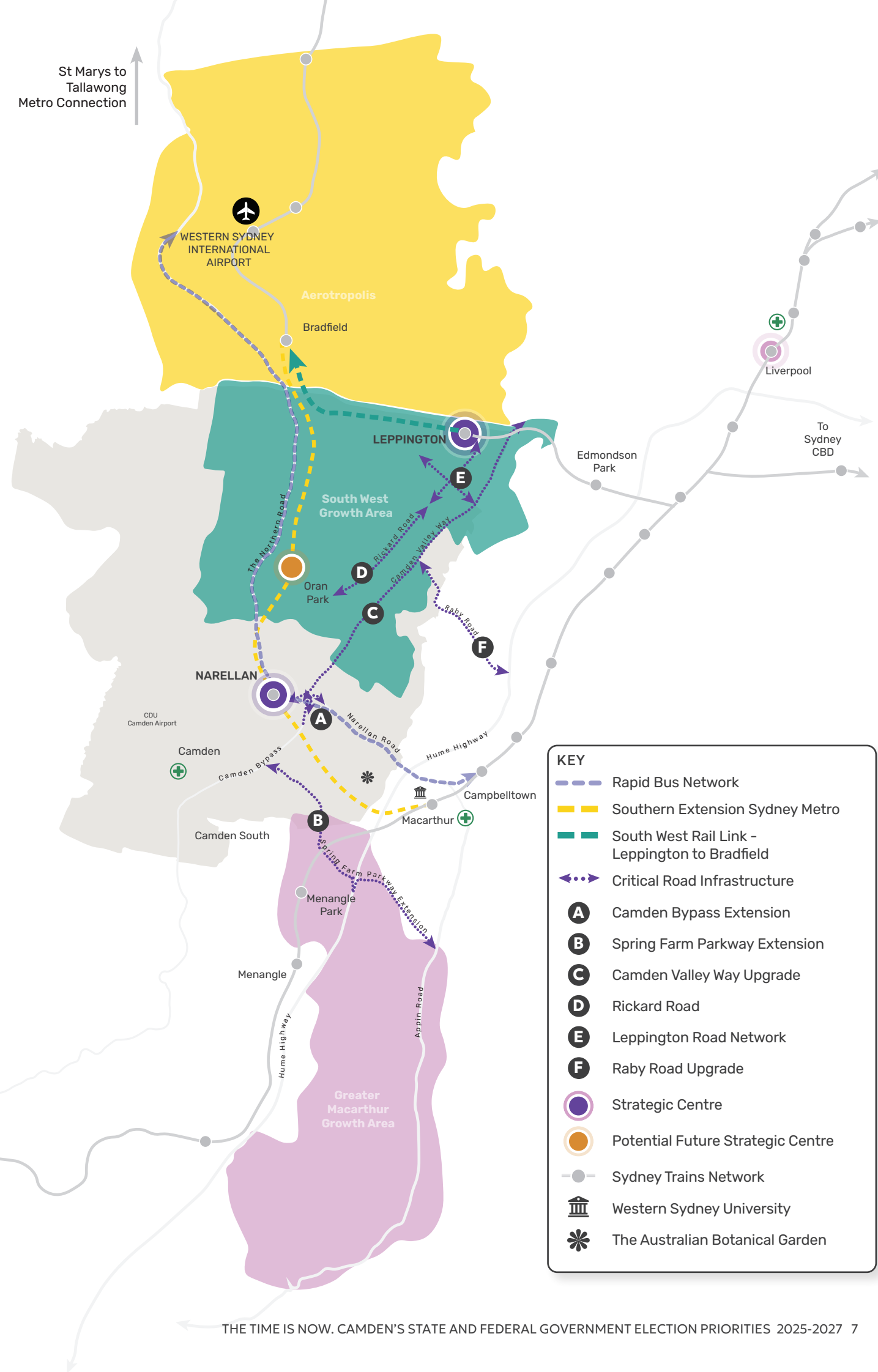


INVESTMENT IN SCHOOLS AND EDUCATION



INVESTMENT IN NEW AND EXISTING HEALTHCARE

Camden can play a key role in supporting government objectives to unlock quality, affordable housing supply with timely investment in infrastructure and services.



Delivery of essential rail services is critical to unlock housing supply, enhance connectivity and accessibility, attract investment and drive economic growth.

PROVISION OF ESSENTIAL RAIL SERVICES

The State and Federal Government must fund the delivery of urgent connections for Camden to the Western Sydney International Airport and beyond, identified in the Western Sydney City Deal.

Investment in the Southern Extension of the Sydney Metro and the Leppington to Bradfield Extension, in combination with other important connections such as St Mary's to Tallawong, will provide the region with easy transit options throughout Greater Sydney.

Investment in these key transport links will unlock housing supply and be the catalyst for Camden to exceed predicted housing and population forecasts and contribute positively to housing affordability.

SOUTHERN EXTENSION OF SYDNEY METRO WSA (NORTH-SOUTH LINE)

Metro connection extending from Macarthur to Bradfield, with stations at Oran Park, Narellan and the Australian Botanic Garden at Mount Annan.

The extension of the metro line will not only ensure residents can access the identified strategic centres of Narellan and Campbelltown, it will also provide essential connections for our community to the new international airport, and open Camden and South West Sydney to visitors, providing easy access to key attractors such as the Australian Botanic Garden, Mount Annan. This connection is essential for the rapidly growing Camden and Macarthur community to have reliable public transport access to Campbelltown Hospital and Western Sydney University, Macarthur Campus.

The current projected timeframe for the first stage of this infrastructure to be delivered in 2047, over two decades from now, is not sufficient to support our community or plan for increased housing delivery in key greenfield areas in Camden LGA. The delivery of the North-South Line will have the biggest impact on South Western Sydney if delivered holistically, allowing for consideration and delivery of higher housing densities around new stations, significantly contributing to the region's housing objectives.

LEPPINGTON TO BRADFIELD EXTENSION

Metro or heavy rail extension linking Leppington to Bradfield including a new station at Bradfield South (also known as Bringelly).

The connection of existing rail services within Camden to the Western Sydney International Airport is needed to ensure seamless connection for visitors, residents and workers between South West Sydney and key hubs including Leppington and Bradfield. This will contribute to the success of the WSIA and address growing transport demands in the strategic centre of Leppington.

WESTERN SYDNEY RAPID BUS

The Western Sydney Rapid Bus Project provides an interim solution to connect Camden with the Western Sydney International Airport, bringing significant social, economic and environmental benefits.

Originally committed in the 2018 Western Sydney City Deal, the NSW Government pledged to deliver rapid bus services by 2026, however, without clear funding and timelines for the delivery of functional public transport, Camden risks being left behind.

A reliable, high-speed bus service is essential to support Camden's growth and ensure better connectivity for residents, workers and businesses.

Council envisions a rapid bus service with high-frequency, quick travel times, strategically located stops and seamless integration with the broader transport network. This service must be underpinned by investment in significant road upgrades in Camden and surrounds. The current NSW Government plan delays the delivery of a rapid bus service, leaving Camden with only a local bus option.

Federal leadership is crucial to deliver this project on time and bolster success of the airport, ensuring the region is connected, competitive and ready for success as the airport opens in 2026.

ENHANCING CONNECTIVITY WITH ROAD INFRASTRUCTURE

Road infrastructure is lagging behind as development rapidly progresses in key locations across the Camden LGA. Timely government investment in road infrastructure is needed to support current and future development. Strategic delivery of road infrastructure will improve mobility, drive economic growth and create a well-connected region.

The priority road projects identified are a fraction of the total road requirements needed in a greenfield location experiencing rapid growth, such as Camden. Ongoing and long-term support is required from the government to ensure road freight and passenger access to the Western Sydney International Airport is not compromised.

RICKARD ROAD, CATHERINE FIELD & LEPPINGTON

Rickard Road, Catherine Field & Leppington

FUNDING SOURCE: NSW Government

- 📍 Unknown
- 💰 \$590m

A key road connecting Oran Park to Leppington, Rickard Road has been identified as a state government funded road to meet the needs of our growing community. There is currently no confirmed timeline for funding, acquisition or construction. It is essential that Rickard Road is prioritised for delivery by the NSW Government.



CAMDEN BYPASS EXTENSION

FUNDING SOURCE: NSW Government

- 📍 Unknown
- 💰 \$150M
- 📍 Narellan

The \$150m upgrade to the Camden Bypass will tackle severe traffic congestion and improve road safety across Camden Bypass, Narellan Road, Northern Road and Camden Valley Way, improving efficiency on the local and regional road network as a result. This project will improve connectivity for residents in Spring Farm, Elderslie and West Camden and facilitate improved road freight access to the Western Sydney International Airport and support the delivery of the Western Sydney Rapid Bus Project.

SPRING FARM PARKWAY EXTENSION – STAGE 2

FUNDING SOURCE: NSW Government

- 📍 Unknown
- 💰 \$593.2M Total
- ⚙️ Stage 1 – Constructed | Stage 2 – \$333.2M | Stage 3 – \$224M | Southern Ramps – \$36M
- 📍 Spring Farm

This project is essential for establishing a critical east-west transport link in the Macarthur region, and addresses a major infrastructure gap by connecting Wollondilly, Campbelltown and Camden. The extension was recently identified as a high priority initiative by the Western Sydney Transport Infrastructure Panel and will integrate key corridors such as the Hume Motorway, Appin Road, Menangle Road and Camden Bypass into a seamless transport network, reducing congestion, improving travel times for commuters and freight vehicles, and relieving pressure on major roads.

LEPPINGTON ROAD NETWORK

FUNDING SOURCE: NSW Government

- 📍 Unknown
- 💰 \$500M+
- 📍 Leppington and surrounds

NSW Government investment in the road network in Leppington is essential for residents in both Camden and Liverpool LGAs. The current rural-standard road network lacks basic infrastructure such as lighting, drainage and footpaths which are creating significant challenges for residents in their daily travel, impacting liveability. There is an urgent need for the NSW Government to deliver the state funded roads within Leppington to unlock development opportunities and serve as a catalyst for further growth. Leppington is planned to deliver over 20,000 dwellings by 2041.

CAMDEN VALLEY WAY UPGRADE

FUNDING SOURCE: NSW Government

- 📍 Unknown
- 💰 \$350M+
- 📍 From Narellan Road to Bringelly Road

Upgrade of Camden Valley Way between Bringelly Road and Narellan Road to three lanes each way and the upgrade of the Camden Valley Way and Bringelly Road Intersection to an interchange. Camden Valley Way does not currently have capacity to cope with additional housing, this upgrade will address severe congestion currently experienced by users, improve road safety and reduce travel times, preparing for ongoing housing provision in the region.

RABY ROAD UPGRADE

FUNDING SOURCE: NSW Government

- 📍 Unknown
- 💰 \$150M
- 📍 Emerald Hills, Raby

Raby Road is a key east-west link between Camden and Campbelltown LGAs, the Hume Highway and major arterial routes. An upgrade is needed to address existing congestion and connectivity challenges, it is proposed that 2.5-kilometre stretch between Thunderbolt Drive and Emerald Hills Boulevard is upgraded to a four-lane divided sub-arterial road, with improved intersections. This will enhance safety, reduce congestion and improve travel reliability, as well as allow opportunities for active transport by integrating pedestrian and cycleway networks.

Timely investment in road infrastructure will help deliver housing in the South West Growth Area and address increasing congestion and commute times for residents of South West Sydney.

STRATEGIC INVESTMENT IN NEW AND EXISTING HEALTHCARE SERVICES

As Camden continues to grow, the demand for comprehensive healthcare services is becoming increasingly critical.

Council calls on the NSW and Australian Governments to:

- **Secure a site for the delivery of a new public hospital located between Oran Park and the Western Sydney International (Nancy-Bird Walton) Airport – this is essential to meet the healthcare needs of our expanding community. This facility would provide timely access to medical care, reducing travel times for residents and alleviating pressure on existing hospitals.**
- **Retain and redevelop Camden Hospital, by expanding its services. Camden Hospital could continue to become the focus of palliative, allied and specialised care.**
- **Fund and deliver co-located integrated health hubs in Oran Park and Leppington Town Centres, with consideration of wrap around social and family support services.**

This strategic approach aims to establish a comprehensive healthcare network that caters to the diverse and evolving needs of our growing community, ensuring all residents have access to affordable high-quality medical care. This will complement the positive impacts that investment in public and active transport will have on the health of our community and region more broadly.

A new public hospital near Oran Park and the redevelopment of Camden Hospital are vital to meet the healthcare and wellbeing needs of our growing community.

IMAGE SOURCE: Copyright State of New South Wales (Transport for NSW)

With many young families and school-aged children choosing to call Camden home, timely access to education and early childhood education, including preschools, is essential. Camden is a family-oriented community, 59.2% of total households in Camden are made up of families with children, and the fastest growing age group in the Camden community are 0 – 4 year olds, who currently make up 9.4% of our population.

With a youthful population approaching primary school age, the planning and delivery of new schools and provision of childcare must keep pace with rapid population growth to ensure families are well-supported. Ten of our public schools are over capacity, and we have only five public high schools that service the 23 suburbs of Camden.

The size, capacity and location of school sites remains a significant and ongoing concern for Council and our residents, and limits the ability for co-location of preschool sites within school grounds through innovative new programs being developed by the NSW Government. Lacking infrastructure within identified school sites has flow on affects for our community, causing frustration and safety concerns during school pick up and drop off.

Delays in delivering new schools means families often face a substantial gap between moving into new communities and having equitable access to these services. School playgrounds are filled with demountable classrooms in an attempt to address capacity issues, at the expense of open spaces for our children to play. We are concerned that continued inconsistencies in growth forecasts used to guide education planning will only compound these issues further.

We call on Schools Infrastructure NSW and the NSW government to prioritise the immediate planning, funding and delivery of primary and secondary schools, with consideration for increasing the minimum size of school sites to address these concerns.

MEETING THE CURRENT AND FUTURE DEMAND FOR SCHOOLS AND EDUCATION

A significant number of schools in Camden are at or over capacity, with only five public high schools serving 23 suburbs – immediate investment in education is needed.

THE TIME IS NOW

Ahead of the 2025 and 2027 Australian and NSW Government elections, we are calling on decision-makers to partner with Council and prioritise Camden's critical needs, with a focus on transformative transport infrastructure and integrated health and education services. These priorities are vital for shaping a future-ready Camden.

Investment from the Australian and NSW Governments in our region is essential to unlock housing supply and address the social challenges of rapid growth. Committed funding and clear timeframes for rail and road infrastructure is needed to allow Council, as well as business and industry, to plan for the future in Camden and South West Sydney. These projects will ease congestion on our roads, improve connectivity and support Camden's continued growth.

To meet the demands of our expanding population, it is essential that the delivery of new schools is timely and well planned, this is a critical need for our young, family-oriented community. In healthcare, we call for the development of a new public hospital and the revitalisation of Camden Hospital to better serve our community. These essential services will ensure Camden is well-supported and our region remains a desirable place to live.


We urge both levels of government to resolve inconsistencies in growth projections, as local forecasts and the current pace of growth significantly exceed state estimates. This disparity has contributed to the delayed provision of essential services in the Camden LGA and highlights the pressing need for increased investment in essential infrastructure to support Camden's growing population.

Partnerships across all three tiers of government are necessary to deliver the infrastructure, services and investment needed to shape Camden's future and deliver State and Federal government housing, employment and wellbeing targets.



camden
council

For further information contact

 13 22 63

 advocacy@camden.nsw.gov.au

 www.camden.nsw.gov.au/advocacy