

# Waterway walk

# BINGO!

Nepean River  
10 years and older

## Hi there local explorer!

Use this handy bingo card to record what you can see, hear, feel, and smell while you are out and about in Camden.

**Print this sheet and fill in the corner triangles to mark your progress! You can write your answers on the back. Can you do them all?**

Download the Nepean River, Waterway Walk guide from Council's website for more information, but remember, you can play Waterway Walk Bingo near any local waterway.

### Remember:

- Wear sensible shoes;
- Be sun safe;
- Bring a drink bottle; and
- Look out for traffic and bikes.

Find a natural surface that feels rough.



Take a deep breath in near a Eucalyptus tree. What does it smell like?



Find a native flower or seed pod. What colour is it?



Find something that shows how humans have changed the environment.

How many snags can you count in the river?

Snags are logs or branches that fall into the river.



Spot an invasive plant or animal.



Spot a nest or nest box. What animals could be inside?



Find any wildlife tracks or scats. Which animal do you think made them?

(Scats are animal poo)



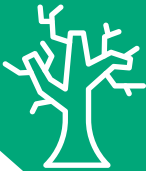
Spot an insect. Do you know what type it is?



Find something that doesn't belong in the natural environment.



Spot a stag. Did you know a stag is a dead, standing tree?



Find a Eucalyptus tree. What does its bark feel like?

Be careful of splinters and insects.

Search for evidence of erosion along the riverbank.

Erosion is caused by water taking away rocks and soil.



Be still and listen. How many different bird calls can you hear?



What urban sounds can you hear?



Spot wildlife in the river.



Find an area that an animal could shelter in.

Find a source of pollution. How does this affect the environment?

Can you tell which direction the river is flowing?



Touch the grass then the footpath. Which one feels warmer than the other?



Find an area with dense plant growth. Why do you think this area is dense?

Find the wetland along the Waterway Walk. What can you hear?



Find a natural area that has been restored by people.

Hint: this could be tree planting or riverbank restoration.



Find the platypus superhero on the Waterway Walk signs.



Find a peaceful area. How does it make you feel?



