



Local Traffic Committee Business Paper

Committee Meeting
20 March 2018

**Council Office
70 Central Avenue
Oran Park**



LOCAL TRAFFIC COMMITTEE
20 March 2018

Dear Sir/Madam

You are advised that the next Local Traffic Committee is scheduled for 20 March 2018, commencing at 9.30am at Council Office, 70 Central Avenue, Oran Park.

Local Traffic Committee members are issued with a full set of business papers of proposed items with supportive information where required. Site inspections are recommended to help minimize the Committee's business and improve member's understanding of the issues reported in this Agenda.

Should you require and further information prior to the meeting please contact Council's Traffic Engineer, Mr Sophak Eng on 4645 5026.

Your sincerely

Vince Capaldi
DIRECTOR COMMUNITY ASSETS

Local Traffic Committee

Background

The Roads and Maritime Services (RMS) is legislated as the Authority responsible for the control of traffic on all NSW Roads. In order to deal with the large number and range of traffic related matters, RMS has delegated certain aspects of the control of traffic on local roads to Council (under the Transport Administration Act 1988). To exercise this delegation, Councils must establish a Local Traffic Committee (LTC) and obtain the advice of the RMS and NSW Police.

Role of the Committee

The LTC is primarily a technical review and advisory committee which considers the technical merits of proposals and ensures that current technical guidelines are considered. It provides recommendations to Council on traffic and parking control matters and the provision of traffic control facilities and prescribed traffic control devices for which Council has delegated authority. The Committee also advises on traffic matters arising from development applications (regulatory signage and line marking only), special events and road safety issues.

Committee Delegations

The LTC has no decision-making powers. Council must refer all traffic related matters to the Local Traffic Committee prior to exercising its delegated functions. Matters related to State Roads or functions that have not been delegated to Council must be referred directly to the RMS or relevant organisation.

The Committee provides recommendations to Council. Council is not bound by the advice of its LTC. Council can choose not to proceed with a recommendation of the Local Traffic Committee by not endorsing it at a Council Meeting where the minutes are presented.

Should Council wish to act contrary to the advice of the Committee or if that advice is not supported unanimously by the Committee members, Council must write to both the RMS and NSW Police, who may then choose to appeal to the Regional Traffic Committee within 14 days.

Committee Membership

The LTC is made up of four formal voting members. The members are as follows:

- one representative of Council as nominated by Council;
- one representative of the NSW Police from each Local Area Command (LAC) within the LGA;
- one representative from the RMS; and
- the local State Member(s) of Parliament (MP) or their nominee.

Where the Council area is represented by more than one MP or covered by more than one Police LAC, representatives are only permitted to vote on matters within their electorate or LAC.

The role of the four voting members is to:

- review the information provided to the committee.
- advise whether or not the technical justification of facilities meet the relevant guidelines and standards (facilities include lines, signs and devices).
- ensure that the recommendations conform to the matters being referred to and should be recommended for Council to endorse.

In relation to this:

- I. The council representatives and Local Members of Parliament (or representative) typically consider the interests of Council and its constituents. Both representatives on the Committee provide valued local knowledge.
- II. The Road and Maritime Services (RMS) representative provides advice on compliance of the matters with regards to various standards and guidelines.
- III. The NSW Police representative provides input on implications for the road network, particularly where a proposal may affect road safety.

The Committee may also have additional informal (non-voting) advisors. These may include:

- Council Officers
- Chamber of Commerce representatives
- Bus Operator representatives
- Other representatives as determined from time to time.

The informal advisors are not required to attend every LTC meeting. Their attendance is only necessary when items appear on the Agenda which affect their area of expertise or responsibility. The informal advisors are not entitled to a vote.

Please note there is no public gallery for these meetings.

LTC Business Paper

Council is responsible for preparing an LTC agenda and circulates to all formal members and informal advisors of the committee approximately one week prior to the meeting. This will allow members to fully consider the issues and determine their response on each item.

Council encourages each member of the LTC to undertake a site visit prior to considering any proposal. Site visits may be undertaken individually or organised with Council's Traffic Engineer(s).

COMMON ABBREVIATIONS

BCA	Building Code of Australia
CC	Construction Certificate
CLEP	Camden Local Environmental Plan
CP	Contributions Plan
CRSO	Community Road Safety Officer
DA	Development Application
DCP	Development Control Plan
DDCP	Draft Development Control Plan
DPI	Department of Planning & Infrastructure
DoT	NSW Department of Transport
EEP	Enhanced Enforcement Programs
EIA	Environmental Impact Assessment
EIS	Environmental Impact Statement
EP&A Act	Environmental Planning & Assessment Act
GLS	Graduated Licensing Scheme
LEP	Local Environmental Plan
LAP	Local Approvals Policy
LBR	Log Book Run
LGA	Local Government Area
LTC	Local Traffic Committee
MACROC	Macarthur Regional Organisation of Councils
MYDAP	Macarthur Young Drivers Assistance Program
PAMP	Pedestrian Access and Mobility Plan
REP	Regional Environmental Plan
RMS	Roads & Maritime Services (incorporating former Roads & Traffic Authority)
RTA	Roads and Traffic Authority of NSW (now part of RMS)
RTC	Regional Traffic Committee
SEPP	State Environmental Planning Policy
SETMP	Special Event Transport Management Plan
SRA	State Rail Authority "Rail Corp"
SREP	Sydney Regional Environmental Plan
SSP	School Safety Program
TCP	Traffic Control Plan
TIA	Traffic Impact Assessment
TMP	Traffic Management Plan
TfNSW	Transport for New South Wales, also commonly referred to as the NSW Department of Transport
WSROC	Western Sydney Regional Organisation of Councils



LOCAL TRAFFIC COMMITTEE

ORDER OF BUSINESS - LOCAL TRAFFIC COMMITTEE

Present

Apologies

Confirm and adopt Minutes of the Local Traffic Committee Meeting held 19 December 2018

LTC01 Business Arising From The Committee's Last Report 5

MATTERS OUTSTANDING

LTC02 Status Of Local Traffic Committee Recommendations And Actions 6

SIGNS, LINES & DEVICES

LTC03 Harland Road, Spring Farm - Timed No Stopping Restrictions And Disability Parking 7

LTC04 Rickard Road, Leppington - Parking Measures At Leppington Public School 11

LTC05 Corbett Close - Spring Farm - No Parking Restriction 14

PERMANENT ITEMS

LTC06 Local Behavioural Programs 16

LTC07 Permanent Items 20

ELECTRONIC MEETING ITEMS

LTC08 Catherine Park Drive, Catherine Field - Signage, Linemarking And Devices Associated With The Development Of Catherine Park Estate, Stage 5 23

LTC09 Wallarah Circuit And Long Reef Circuit, Gregory Hills - Signage, Linemarking And Devices Associated With The Development Of Gregory Hills, Stage 3B 27

LTC10 Rixon Street And Searle Way, Oran Park - Signage, Linemarking And Devices Associated With The Development Of Oran Park, Tranche 9 Stage 3 32

LTC11 Australia Day 2018 - Revised Traffic Management Plan 36

LTC12 Central Avenue, Oran Park - Date Night Special Event Transport Management Plan 40

LTC13 Cawdor Road / Mitchell Street / John Street / Argyle Street, Camden - Camden Show 2018 - Special Event Transport Management Plan 43



LTC14	Richardson Road, Spring Farm - Signage, Linemarking And Devices Associated With The Development Of A Childcare Centre At 33 Eskdale Close, Narellan Vale	54
LTC15	Curlewis Street, Gledswood Hills - Signage, Linemarking And Devices Associated With The Development Of Gledswood Hills, Stage 2	59
LTC16	Kingsman Avenue, Elderslie - Signage, Linemarking And Devices Associated With The Development Of Elderslie, Stages 3, 4 And 5.....	63

BUSINESS WITHOUT NOTICE

**DATE OF NEXT LOCAL TRAFFIC COMMITTEE MEETING – TUESDAY, 17 APRIL
2018**

INFORMAL ITEMS



LOCAL TRAFFIC COMMITTEE

LTC01

SUBJECT: BUSINESS ARISING FROM THE COMMITTEE'S LAST REPORT
FROM: Manager Assets, Design & Traffic Services
TRIM #: 18/69206

The Local Traffic Committee report dated 19 December 2017 was presented to the Council meeting on 13 February 2018. Council adopted the Local Traffic Committee's recommendations without amendment.

RECOMMENDED

That the adoption by Council of the Committee's recommendations dated 19 December 2017 be noted.



LOCAL TRAFFIC COMMITTEE

LTC02

**SUBJECT: STATUS OF LOCAL TRAFFIC COMMITTEE RECOMMENDATIONS
AND ACTIONS**

FROM: Manager Assets, Design & Traffic Services

TRIM #: 18/69216

Work instructions have been issued for recommendations of the Local Traffic Committee from the meeting on 19 December 2017 except for Mount Annan Drive for which details plans are being prepared.

RECOMMENDED

That the status report on outstanding Local Traffic Committee recommendations and actions be noted.

LOCAL TRAFFIC COMMITTEE

LTC03

**SUBJECT: HARLAND ROAD, SPRING FARM - TIMED NO STOPPING
RESTRICTIONS AND DISABILITY PARKING**

FROM: Manager Assets, Design & Traffic Services

TRIM #: 18/26690

PURPOSE OF REPORT

To seek Local Traffic Committee concurrence for the installation of timed No Stopping signage along Harland Road between Attwood Road and Barley Road and disabled parking west of Barley Road.

BACKGROUND

The complete road network around Spring Farm Public School has not yet been fully developed. Temporary parking restrictions were previously installed in Wagner Street. For school buses to more easily access the relocated bus bay at the school it is more suitable to use the extension of Harland Road instead of Wagner Street with the parking restrictions relocated. On street disability parking is also been requested by the school.

MAIN REPORT

Since the Spring Farm Public School opened, school buses have been using narrow residential streets to access the school. Wagner Road has a 7 metre wide carriageway and temporary parking restrictions were therefore previously installed to facilitate bus access.

Buses have now started traveling along Harland Road, which has an 8 metre wide carriageway, rather than Wagner Road, since Harland Road was extended eastwards. At the same time a bus zone on Barley Road was relocated southwards adjacent to the school.

Council is therefore proposing to remove the existing timed restrictions from Wagner Road and install No Stopping (R5-404) signage (8:30-9:30am, 2:30-3:30pm School days) along the southern section of Harland Road between Barley Road and Attwood Road, Spring Farm. Parking around the corner would be restricted at all times.

This treatment is expected to be an interim arrangement until an alternate access is constructed in future subdivisions.

Consultation has been undertaken with affected residences and no responses have been received.

Spring Farm Public School has also requested disability parking at the western end of Harland Road to facilitate drop off and pick up for their special needs stream. This area is currently signposted as 'No Parking 8am-9:30am, 2:30pm-4pm School Days'. It is proposed to convert 26 metres to disability parking (R5-1-3 signage and linemarking).



FINANCIAL AND ASSET MANAGEMENT IMPLICATIONS

It is proposed that the cost be funded from the RMS Block Grant (Traffic Facilities component) for the 2017/2018 financial year.

CONCLUSION

To facilitate bus access and disability parking for Spring Farm Public School it is recommended that changes are made to kerbside parking restrictions.

RECOMMENDED


That the Local Traffic Committee recommends that Council approves in the vicinity of Harland Road, Spring Farm:

- i. removal of existing timed No Stopping (R5-404) (8am-9:30am, 2:30pm - 4pm School Days) restrictions from Wagner Road;**
- ii. No Stopping (R5-404) (8am-9:30am, 2:30pm - 4pm School Days) restrictions for 158 metres along the southern side of Harland Road;**
- iii. No Stopping (R5-400) restrictions for 19 metres along Harland Road near the intersection with Attwood Road;**
- iv. No Stopping (R5-400) restrictions for 17 metres along the eastern side of Attwood Road near the intersection with Harland Road; and**
- v. Disability parking (R5-1-3 signage and linemarking) for 26 metres on Harland Road (west of Barley Road), replacing No Parking 8am-9:30am.**

ATTACHMENTS


- 1. Signage Plan - Harland Road**
- 2. Disability Parking - Harland Road**





Camden Council
70 Central Ave
ORAN PARK NSW 2570
Telephone: 02 4654 7777
Fax: 02 4654 7629
Email: mail@camden.nsw.gov.au

Important Notice!
This map is not a precise survey document. Accurate locations can only be determined by a survey on the ground. This information has been prepared for Council's internal purposes and for no other purpose. No statement is made about the accuracy or suitability of the information for use for any purpose (whether the purpose has been notified to Council or not). While every care is taken to ensure the accuracy of this data, neither the Camden Council nor the LPI makes any representations or warranties about its accuracy, reliability, completeness or suitability for any particular purpose and disclaims all responsibility and all liability (including without limitation, liability in negligence) for all expenses, losses, damages (including indirect or consequential damage) and costs which you might incur as a result of the data being inaccurate or incomplete in any way and for any reason.
© The State of New South Wales (Land and Property Information),
© Camden Council.

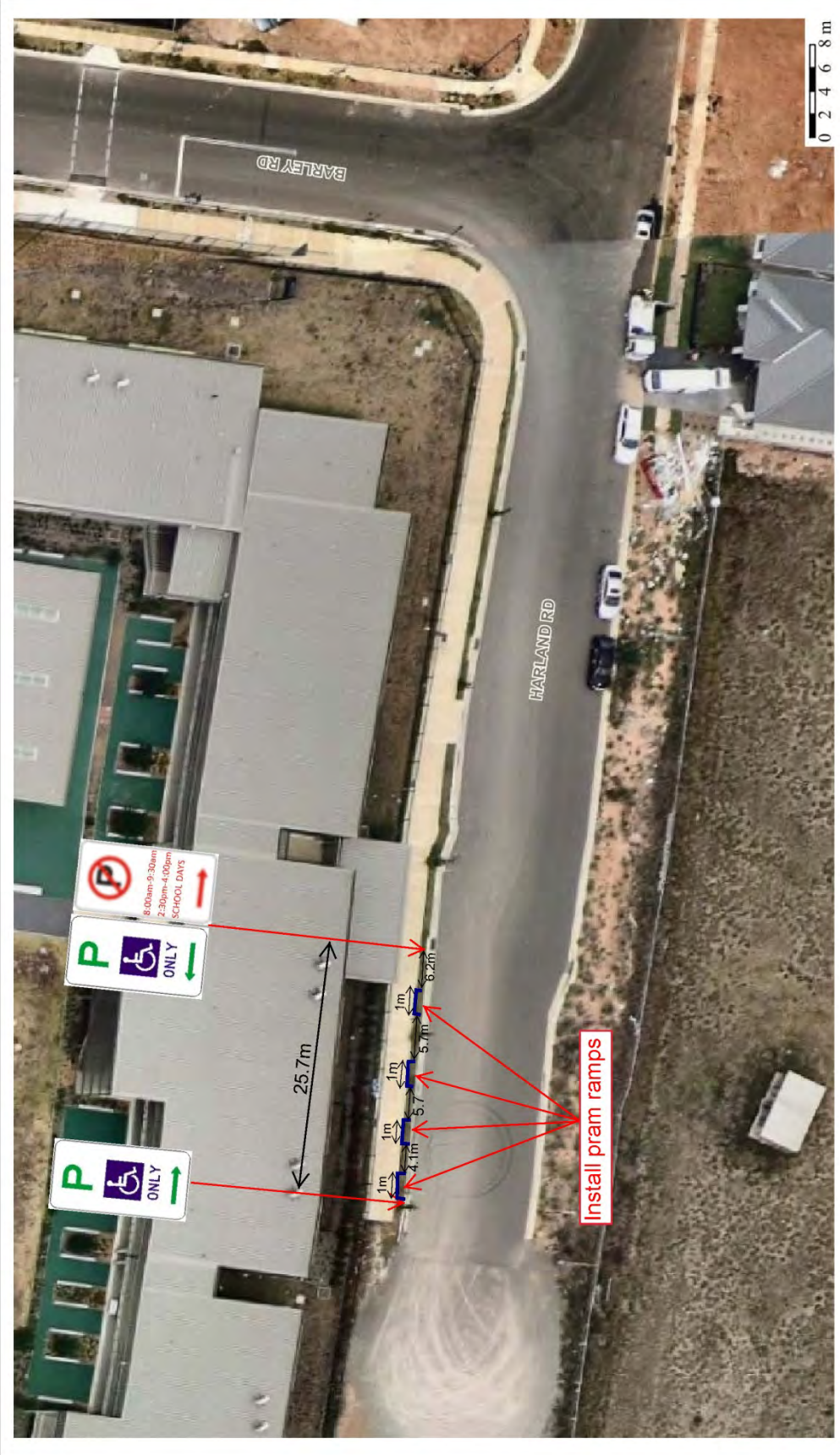


Drawn By: Roy El Kazzi
Projection: GDA94 / JMG zone 56
Date: 14/11/2017 11:30 AM

Harland Road, Spring Farm - Site Map

Map Scale: 1:1743 at A4

Created on: 7/03/2018 3:29 PM



DISCLAIMER: This map has been prepared from Council records by the Land Information Section. If you intend to rely on this information you should have it verified first. Camden Council accepts no responsibility for any errors or omissions. This map should not be reproduced without the permission of Camden Council.

Subject Site
Harland Road, Spring Farm

Map Scale: 1:450
Projection: GD84 / MGA zone 56
Date: 7/03/2018 3:29 PM



 Camden Council
70 Centre Ave, NSW 2570
Telephone: 02 4654 7777
Fax: 02 4654 7829
Email: mail@camden.nsw.gov.au

LOCAL TRAFFIC COMMITTEE

LTC04

SUBJECT: RICKARD ROAD, LEPPINGTON - PARKING MEASURES AT LEPPINGTON PUBLIC SCHOOL

FROM: Manager Assets, Design & Traffic Services

TRIM #: 18/69915

PURPOSE OF REPORT

To seek Local Traffic Committee concurrence for amending traffic control restrictions and extending timed parking in Rickard Road, Leppington adjacent to Leppington Public School.

BACKGROUND

Safety concerns have been raised regarding parking spaces outside Leppington Public School. There have also been concerns raised regarding commuters parking and limiting the availability of parking for visitors to the school. The proposed measures aim to address this situation.

MAIN REPORT

Rickard Road is a two lane rural collector road with lane widths of 3 metres and unsealed shoulders. Indented angled parking spaces are situated along the bend adjacent to Leppington Public School. Leppington Station is approximately 500 metres away which has resulted in significant increases in traffic past the school as well as some commuters using the school parking. The school population has also increased in recent years. These issues have increased parking stress at school drop off and pick up times.

Existing 90 degree parking bays have become hazardous as traffic flow is increased, and it is proposed to replace the parking bays with 45 degree angle parking bays and associated '45 degree angle parking front to kerb' signage (R5-501). It is also proposed to maintain the existing two hour timed parking (R5-2) signage along the angled parking bays.

It is also proposed to provide 6 metres of No Stopping (R5-400) to the north of the parking bays to accommodate vehicle manoeuvrability. In order to deter all day parking and accommodate visitors to the school it is proposed to implement 42 metres of two hour timed parking restrictions (R5-2) signage on school days.

It is also proposed to implement a painted median parallel with the edge of road in order to minimise conflict between vehicles parking and traffic on Rickard Road and encourage one-way flow within the parking area.

These arrangements are interim until Rickard Road is upgraded to a dual-carriageway through the development of the Leppington North precinct.

These measures have been developed in consultation with the school.

FINANCIAL AND ASSET MANAGEMENT IMPLICATIONS



The estimated cost of the recommended work is \$4,000. It is proposed that the cost be funded the RMS Block Grant (Traffic Facilities Component) for the 2017/2018 financial year.

CONCLUSION

Concerns have been raised regarding safety and a lack of parking availability along Rickard Road, Leppington. It is recommended that the Committee supports the realignment of the parking bays, implementation of the painted island and extension of timed parking restrictions.

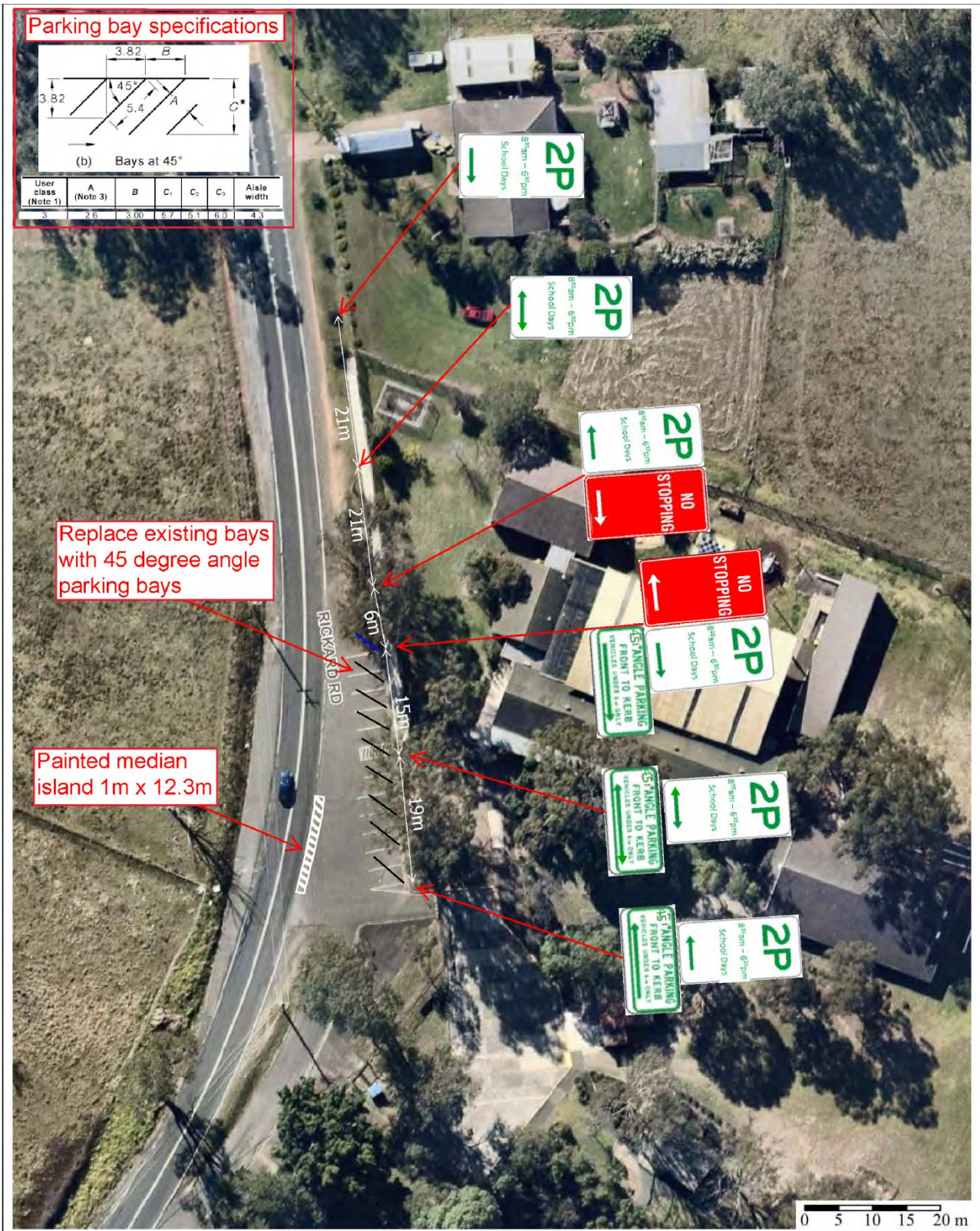
RECOMMENDED

The Local Traffic Committee recommends that Council approves on the eastern side of Rickard Road, Leppington, adjacent to Leppington Public School, from north to south:

- i. two hour (2P) parking restrictions (8:30am-6:30pm School Days) (R5-2 signage) for 42 metres;**
- ii. No Stopping (R5-400) restrictions for 6 metres;**
- iii. 45 degree angled parking with associated (R5-505) signage replacing the existing 90 degree parking for 38 metres; and**
- iv. a painted median island 12.3 metres in length.**

ATTACHMENTS

- 1. Signage Plan - Rickard Road, Leppington**



Camden Council
 70 Central Ave
 ORAN PARK NSW 2570
 Telephone: 02 4654 7777
 Fax: 02 4654 7829
 Email: mail@camden.nsw.gov.au

Subject Site
 Rickard Road, Leppington

Map Scale: 1:751
 Projection: GDA94 / MGA zone 56
 Date: 7/03/2018 8:43 AM



DISCLAIMER: This map has been prepared from Council records by the Land Information Section. If you intend to rely on this information you should have it verified first. Camden Council accepts no responsibility for any errors or omissions. This map should not be reproduced without the permission of Camden Council.



LOCAL TRAFFIC COMMITTEE

LTC05

SUBJECT: CORBETT CLOSE - SPRING FARM - NO PARKING RESTRICTION
FROM: Manager Assets, Design & Traffic Services
TRIM #: 18/73662

PURPOSE OF REPORT

To seek Local Traffic Committee concurrence for the installation of No Parking restrictions in Corbett Close, Spring Farm.

BACKGROUND

Concerns have been raised regarding motorists parking in the turning head at the end of Corbett Close, limiting access for properties at the end of Corbett Close.

MAIN REPORT

An investigation has been undertaken by Council and as a result it is recommended that No Parking restrictions be installed in the turning head. This will ensure this area is kept clear, allowing vehicles to turn around safely including waste trucks. The restrictions allow for drop off and pick but not parking. **Attachment 1** shows details of proposal.

Residents were consulted about the above proposal. Two respondents responded raising no objections.

FINANCIAL AND ASSET MANAGEMENT IMPLICATIONS

It is proposed that the cost of installation be funded from the RMS Block Grant (Traffic Facilities component) for the 2017/18 financial year at an approximate cost of \$400.

CONCLUSION

Following an investigation into a parking issue in Corbett Close, Spring Farm, it is recommended that No Parking restrictions be installed in the turning head.

RECOMMENDED

That the Local Traffic Committee recommends that Council approves in Corbett Close, Spring Farm, No Parking (R5-40) for 50 metres at the eastern end.

ATTACHMENTS

1. Proposed No Parking - Corbett Close, Spring Farm



	<p>Important Notice! This map is not a precise survey document. Accurate locations can only be determined by a survey on the ground. This information has been prepared for Council's internal purposes and for no other purpose. No statement is made about the accuracy or suitability of the information for use for any purpose (whether the purpose has been notified to Council or not). While every care is taken to ensure the accuracy of this data, neither the Camden Council nor the LPJ makes any representations or warranties about its accuracy, reliability, completeness or suitability for any particular purpose and disclaims all responsibility and all liability (including without limitation, liability in negligence) for all expenses, losses, damages (including indirect or consequential damage) and costs which you might incur as a result of the data being inaccurate or incomplete in any way and for any reason. © The State of New South Wales (Land and Property Information), © Camden Council.</p>		<p>Drawn By: Sopha, Eng Projection: GDA94 / MGA zone 56 Date: 13/12/2017 9:47 AM</p>	<p>Map Scale: 1:476 at A4</p>
<p>Camden Council 70 Central Ave OSAN PARK NSW 2570 Telephone: 02 4654 7777 Fax: 02 4654 7929 Email: mail@camden.nsw.gov.au</p>				



LOCAL TRAFFIC COMMITTEE

LTC06

SUBJECT: LOCAL BEHAVIOURAL PROGRAMS

FROM: Manager Assets, Design & Traffic Services

TRIM #: 18/61417

PURPOSE OF REPORT

To advise the Local Traffic Committee of local behavioural campaigns being undertaken to improve road safety and community safety in the Camden Local Government Area.

BACKGROUND

The Community and Road Safety Action Plan is developed on a yearly basis to provide direction to the Community Road Safety Officer (CRSO). Projects and programs that are implemented in the Camden Local Government Area (LGA) are developed from both research and statistical analysis undertaken.

This report outlines the progress of projects being implemented in the 2017/2018 financial year.

MAIN REPORT

Project	Target Issue	Current Status
RBT Plan B Campaign	Drink Driving <i>To educate and inform the community about the dangers of drink driving, to influence responsible road safety behaviour, and to work with the Camden LAC to reduce the incidence of drink driving.</i>	CRSO continues to work with Camden Highway Patrol and the Camden Liquor Accord on coordinated approaches to reducing the incidence of drink driving. Information continues to be distributed to licensed premises in order to get the drink drive message across to the community. Mobile Drug Testing is now also a priority, with heightened Police operations being held.
Drive 2 Stay Alive – Year 11 Students	Young drivers <i>In-school program designed to provide road safety awareness to Year 11 students in Term 3 to reduce the incidence of casualty and fatality crashes in young drivers. The sessions include information about police enforcement, drug and alcohol impairment, licensing and heavy vehicle awareness.</i>	The program has now been finalised for 2017 with all four participating schools having the program held in the second half of the year. All schools have now been booked for 2018. Dates as follows: Magdalene Catholic HS – 17 August 2018, Mt Annan Christian College – 31 August 2018, Mt Annan HS – 26 September 2018, Elizabeth Macarthur HS – 19 October 2018, Oran Park Anglican College – 29 November 2018

Project	Target Issue	Current Status
School Safety Program	<p>Vulnerable road users, pedestrians, road users around schools</p> <p><i>Program designed to address road safety issues around schools, improve safety and education amongst road users, parents and students in school zones.</i></p>	<p>The School Safety Program continues to work on identifying and improving traffic facilities and driver behaviour around schools. Other engineering and road safety issues have been investigated and actioned as they arise, and as appropriate.</p> <p>CRSO, Rangers and Police target as many of the local primary schools as possible on a regular basis, with a particular focus in the beginning of the school year in order to assist new parents with the road and parking conditions around schools. Schools targeted so far this year include; Mount Annan PS, Narellan Vale PS, Currans Hill PS, Oran Park PS and Mount Annan HS</p>
Slow Down	<p>Speed</p> <p><i>Raise awareness and reduce the incidence of speeding on local roads. Work with Camden LAC to further reduce the incidence of speeding.</i></p>	<p>50km/hr Slow Down bus shelter advertisements are still in place at identified sites throughout the LGA where the 50 km/hr general urban speed limit applies. CRSO is continuing to work with Camden LAC Traffic Section and Camden Highway Patrol to address speed complaints from residents. CRSO continues to forward any resident speed or traffic complaints to Camden LAC Traffic Services and Highway Patrol for investigation as necessary.</p>
Choose Right Buckle Right	<p>Child Restraints</p> <p><i>To educate and increase awareness of the importance of correct child restraint use and fitting. To provide free child restraint fitting and checking days to the community.</i></p>	<p>The last child restraint fitting and checking day was held on 1 March 2018 and this event was fully booked. The next event is scheduled to be held in June 2018.</p>
Graduated Licensing Scheme Workshops (GLS)	<p>Parents and supervisors of learner drivers</p> <p><i>Educational workshops for parents and supervisors of learner drivers, delivered to assist awareness and knowledge of the graduated licensing scheme.</i></p>	<p>Planning for the next session is currently underway. It is envisioned this will be held in partnership with Campbelltown City Council.</p>



Project	Target Issue	Current Status
Log Book Run (LBR) – Drives for Learners In Macarthur	Young drivers <i>Increase on-road experience obtained by learner drivers and disseminate road safety messages and resources</i>	The next Day Log Book Run is being held on 18 March 2018. The following Day Log Book Run is scheduled for June 2018.
Community Safety Plan	General community safety <i>Identify and introduce community safety programs and initiatives in the Camden LGA as appropriate.</i>	CRSO continues to work on identifying and implementing community safety programs, audits and works as appropriate. CRSO continues to work with the Camden Police Crime Prevention Officer to monitor and address community safety issues as they arise. Grant funding through both the State and Federal Community Safety Funds has been applied for, targeting potential areas for enhanced treatments.
Park Smart	Community safety, Steal from Motor Vehicle offences	Planning for 2018 program rollout will be undertaken in the new year, with a view to continuing to target local shopping centre car parks, plus commuter car parks.
Camden Liquor Accord	Drink Driving, community safety, alcohol related issues <i>Implementing programs and educating the community to reduce the incidence of alcohol related problems, drink driving and antisocial behaviour.</i>	CRSO continues to work through the Camden Liquor Accord to implement and address community and road safety issues related to alcohol consumption.
Bike Safety Awareness Program	Bike safety <i>To promote safe cycling. A bike safety education program aimed to teach best safety practices when riding a bicycle.</i>	Cycling education and programs are currently being considered, subject to funding availability.
Seniors Safety Morning Teas	Seniors Safety – Pedestrian safety <i>Partnership with Camden Police and Barnes Driving School to promote and educate regarding best practice pedestrian and personal safety and licensing conditions for older drivers</i>	Planning for the program rollout and venues for 2018 is currently being undertaken.

Project	Target Issue	Current Status
Graffiti Education	Graffiti prevention, community safety, young people <i>To assist in the reduction of graffiti offences through early intervention education</i>	Council has committed to running this program in schools again in 2018. Programming is underway with most schools booked.
Traffic Offenders Program	Driving offenders, speed and drink driving offenders, general road safety improvement. <i>To reduce the incidents of recidivist driving offences and to educate driving offenders to reduce re-offending.</i>	Both the Smart Driving Program and the PCYC Traffic Offenders Intervention Program (TOIP) continued to be held, with a presentation on “Low Risk Driving” delivered by the CRSO. The Smart Driving Program runs once per month, and the PCYC TOIP runs bi-monthly. Both programs are conducted on a Saturday.

FINANCIAL AND ASSET MANAGEMENT IMPLICATIONS

Program funding has been identified in 2017/2018 through Roads and Maritime Services grant funding with a contribution from Council. A report is being prepared to Council for formal acceptance of program funding.

RECOMMENDED

The Local Traffic Committee recommends that Council receives and notes the Local Behavioural Programs report for March 2018.



LOCAL TRAFFIC COMMITTEE

LTC07

SUBJECT: PERMANENT ITEMS

FROM: Manager Assets, Design & Traffic Services

TRIM #: 18/69223

i. Bike Plan

2017/18 Program

Council has accepted funding for:

- Shared Path Signage and Line Marking - LGA-wide.

Funding applications have been submitted for the 2018/19 program as follows:

Location	Project
Cawdor Road, Cawdor – Sheathers Lane to Camden High School	Design of shared path to school and land acquisition
Waterworth Drive, Mount Annan - Shared path	Design and construction of a shared path from Narellan Road to Mount Annan Leisure Centre
Stockman's Drift, Mount Annan - Shared path	Design and construction of a shared path to Narellan Road to Stockman's Drift Reserve

ii. Pedestrian Access Mobility Plan (PAMP)

2017/18 Program

Pedestrian Infrastructure Safety Around Schools Program:

- Old Hume Highway, Camden (Camden South Public School) – enhanced pedestrian crossing – detailed design and consultation is underway.
- Elyard Street, Narellan (Narellan Public School) – enhanced pedestrian crossing – construction is substantially complete.

Funding applications have been submitted for the 2018/19 program as follows:

Location	Project
Crookston Drive, Camden South	Design and construction of new pedestrian refuge near seniors village
The Hermitage Way, Gledswood Hills	Design and construction of new pedestrian refuge near park
South Circuit, Oran Park	Design and construction of new pedestrian refuge near seniors village
Higgins Avenue, Elderslie	Design and construction of new pedestrian refuge near seniors village
Richardson Road, Spring Farm	Design and construction of new pedestrian refuges

iii. Black Spot Identification/Evaluation/Treatment

2016/17 Program

- Deepfields Road, Catherine Field – shoulder and intersection upgrades – construction is underway;
- Burraborang Road/Cawdor Road, Cawdor - intersection upgrade – construction is complete.

2018/19 Program

Council has accepted funding for under the Safer Roads Program for:

- Welling Drive / Waterworth Drive / Henrietta Street roundabout upgrade.

A further funding submission has been made for:

- Catherine Field Road – shoulder enhancements

iv. Upcoming Major Road Works / Events involving Public Roads

Works / Event (Proponent)	Location	Program
Bringelly Road Upgrade – Stages 1 and 2 (RMS)	Bringelly Road	Ongoing
The Northern Road Upgrade – Stages 1 and 2 (RMS)	The Northern Road	Ongoing
Narellan Road Upgrade – Stage 2 (RMS)	Narellan Road	Substantially complete
Springs Road and Liz Kernohan Drive extensions (Developer – Urban Growth)	Springs Road / Liz Kernohan Drive / Haul Road, Spring Farm	June 2017 to March 2018
Deepfields Road –intersection and shoulder upgrades (Council)	Intersection with Catherine Fields Road and selected other sections	April 2018
Catherine Fields Road - Road Reconstruction (Council)	From Deepfields Road for 500 metres	April / May 2018
Turner Road – Road Reconstruction (Council)	Camden Valley Way to Pioneer Street	May / June 2018
Macarthur Road intersection upgrade with traffic lights (Council)	Camden Valley Way / Macarthur Road, Elderslie	January to late 2018
Grahams Hill Road intersection upgrade (Council)	Camden Valley Way / Grahams Hill Road, / Richardson Road, Narellan	June 2018 to late 2018
Camden Show 2018	Argyle Street / John Street, Camden	16 & 17 March 2018
ANZAC Day 2018	Argyle Street / John Street, Camden	25 April 2018
Richardson Road (Developer – Vesta Homes)	New roundabout at Bluebell Crescent	Substantially complete
Richardson Road (Council)	Bluebell Crescent to Welling Drive	July / August 2018
Argyle Street Upgrade Stage 3 (Council)	Murray Street to Oxley Street	February to September 2018



RECOMMENDED

The Local Traffic Committee recommends that Council receives and notes the Permanent Items report for March 2018.

LOCAL TRAFFIC COMMITTEE

LTC08

SUBJECT: CATHERINE PARK DRIVE, CATHERINE FIELD - SIGNAGE, LINEMARKING AND DEVICES ASSOCIATED WITH THE DEVELOPMENT OF CATHERINE PARK ESTATE, STAGE 5

FROM: Manager Assets, Design & Traffic Services

TRIM #: 18/70141

ELECTRONIC MEETING ITEM DATE: 20 December 2017

PURPOSE OF REPORT

To document approval previously provided by the Local Traffic Committee through an Electronic Meeting for a signage and line marking plan associated with the construction of new roads associated with the development of Catherine Park Estate, Stage 5.

MAIN REPORT

A signage and linemarking plan has been received by Council for the construction of new roads associated with the development Catherine Park Estate, Stage 5. The location is highlighted on **Attachment 1**. This is related to DA number DA/2017/117/1.

The Engineering Drawing No. 711 Rev.1, Project No.X12249.05 prepared by Calibre Consulting provides details of the proposed signage and linemarking (**Attachment 2**). The plan is considered to be in accordance with Austroads, Australian Standards and RMS supplements for the placement of regulatory signage and linemarking and it is recommended that LTC supports the proposed measures.

Electronic Meeting Reference	Agreed recommendation of the Local Traffic Committee
2018/01	<p>The Local Traffic Committee recommends that Council, in the vicinity of Catherine Park Drive, Catherine Field, approves the regulatory signage and linemarking associated with the subdivision of Catherine Park Estate, Stage 5 as shown on the Engineering Drawing No. 711 Rev.1, Project No.X12249.05 subject to:</p> <ul style="list-style-type: none"> i. the installation being completed by the applicant at their cost; ii. all signage being sign size A; and iii. street lighting levels for devices being in accordance with Australian Standard AS/NZS 1158, subject to further Council approval of the lighting design.

This recommendation was supported unanimously by the four voting members.

This recommendation has been resolved by a Council Officer under Delegated Authority.

RECOMMENDED



That Council receives and notes the report on Catherine Park Drive, Catherine Field – Signage, Line Marking and Devices associated with the Development of Catherine Park Estate, Stage 5.

ATTACHMENTS

1. Site Location - Catherine Park Estate, Stage 5
2. Signage and Linemarking Plan - Catherine Park Estate, Stage 5



CATHERINE PARK ESTATE STAGE 5 ROAD & DRAINAGE DESIGN

FOR CONSTRUCTION CERTIFICATE



LOCALITY PLAN
N.T.S.

LGA CAMDEN COUNCIL
 LOT 2, DP1173813
 LOT 293, DP708154
 LOT 1175, DP1208873
 DA20117/171



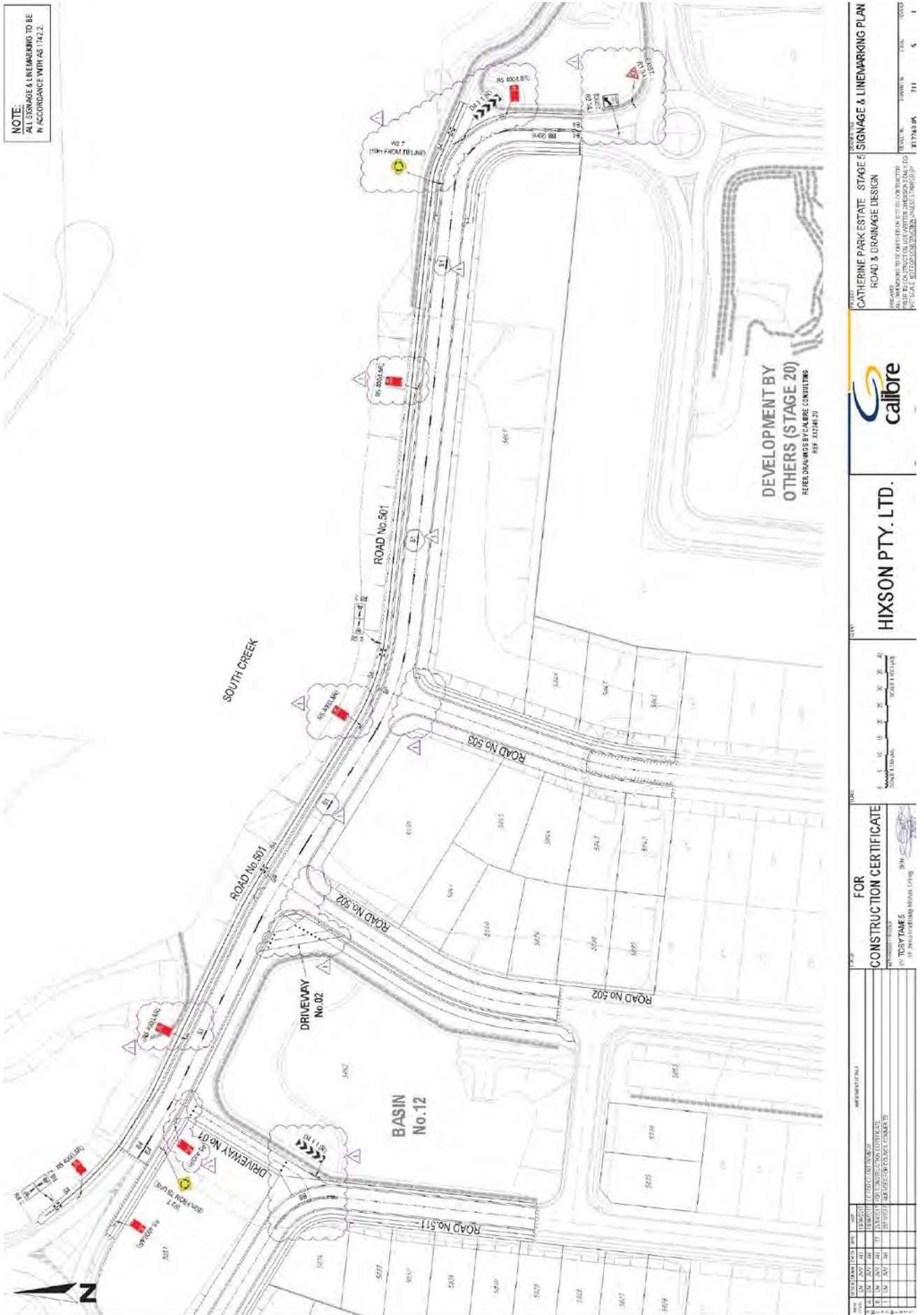
HIXSON PTY. LTD.

DRAWING LIST

GENERAL	DRAINAGE CALCULATIONS
001 COVER SHEET	811 DRAINAGE CALCULATIONS HYDROLOGY SHEET 01 OF 06
002 STANDARD NOTES & LEGEND	822 DRAINAGE CALCULATIONS HYDROLOGY SHEET 02 OF 06
003 GENERAL ARRANGEMENT PLAN	833 DRAINAGE CALCULATIONS HYDROLOGY SHEET 03 OF 06
004 SHEET LAYOUT PLAN	844 DRAINAGE CALCULATIONS HYDROLOGY SHEET 04 OF 06
SEDIMENT & EROSION CONTROL	855 DRAINAGE CALCULATIONS HYDROLOGY SHEET 05 OF 06
101 SEDIMENT & EROSION CONTROL PLAN	866 DRAINAGE CALCULATIONS HYDROLOGY SHEET 06 OF 06
102 SEDIMENT & EROSION CONTROL NOTES & DETAILS	877 DRAINAGE CALCULATIONS HYDROLOGY SHEET 07 OF 06
SITE TECHNICIANS	888 DRAINAGE CALCULATIONS HYDROLOGY SHEET 08 OF 06
201 SITE RECORDING PLAN	899 DRAINAGE CALCULATIONS HYDROLOGY SHEET 09 OF 06
211 SITE SECTIONS SHEET 01 OF 02	900 DRAINAGE CALCULATIONS HYDROLOGY SHEET 10 OF 06
212 SITE SECTIONS SHEET 02 OF 02	901 DRAINAGE CALCULATIONS HYDRAULICS SHEET 01 OF 02
ENGINEERING PLAN	902 DRAINAGE CALCULATIONS HYDRAULICS SHEET 02 OF 02
301 ENGINEERING PLAN 01 OF 03	903 DRAINAGE CALCULATIONS IN/WR HYDRAULICS SHEET 01 OF 02
302 ENGINEERING PLAN 02 OF 03	904 DRAINAGE CALCULATIONS IN/WR HYDRAULICS SHEET 02 OF 02
ROAD LONGITUDINAL SECTIONS	905 DRAINAGE CALCULATIONS IN/WR HYDRAULICS SHEET 03 OF 02
401 LONGITUDINAL & TYPICAL SECTIONS ROAD N+30	906 DRAINAGE CALCULATIONS IN/WR HYDRAULICS SHEET 04 OF 02
402 LONGITUDINAL & TYPICAL SECTIONS ROAD N+50 & 503	907 DRAINAGE CALCULATIONS IN/WR HYDRAULICS SHEET 05 OF 02
AUT LONGITUDINAL & TYPICAL SECTIONS ROAD N+51 & DRIVEWAY N+ 02	908 DRAINAGE CALCULATIONS IN/WR HYDRAULICS SHEET 06 OF 02
501 CROSS SECTIONS ROAD N+51 SHEET 01 OF 03	909 DRAINAGE CALCULATIONS IN/WR HYDRAULICS SHEET 07 OF 02
502 CROSS SECTIONS ROAD N+51 SHEET 02 OF 03	910 DRAINAGE CALCULATIONS IN/WR HYDRAULICS SHEET 08 OF 02
503 CROSS SECTIONS ROAD N+51 SHEET 03 OF 03	911 DRAINAGE CALCULATIONS IN/WR HYDRAULICS SHEET 09 OF 02
504 CROSS SECTIONS ROAD N+65	912 DRAINAGE CALCULATIONS IN/WR HYDRAULICS SHEET 10 OF 02
505 CROSS SECTIONS ROAD N+50	913 DRAINAGE CALCULATIONS IN/WR HYDRAULICS SHEET 11 OF 02
506 CROSS SECTIONS ROAD N+50 SHEET 01 OF 02	914 DRAINAGE CALCULATIONS IN/WR HYDRAULICS SHEET 12 OF 02
507 CROSS SECTIONS ROAD N+50 SHEET 02 OF 02	915 DRAINAGE CALCULATIONS IN/WR HYDRAULICS SHEET 13 OF 02
508 CROSS SECTIONS ROAD N+50 SHEET 03 OF 02	916 DRAINAGE CALCULATIONS IN/WR HYDRAULICS SHEET 14 OF 02
INTERSECTION DETAIL & CROSS SECTIONS N+30 & DRIVEWAY	917 DRAINAGE CALCULATIONS IN/WR HYDRAULICS SHEET 15 OF 02
601 INTERSECTION DETAIL & CROSS SECTIONS N+30 & DRIVEWAY	918 DRAINAGE CALCULATIONS IN/WR HYDRAULICS SHEET 16 OF 02
602 INTERSECTION DETAIL & CROSS SECTIONS N+40 & DRIVEWAY	919 DRAINAGE CALCULATIONS IN/WR HYDRAULICS SHEET 17 OF 02
PROVISIONS ROADWORKS PLANS	920 DRAINAGE CALCULATIONS IN/WR HYDRAULICS SHEET 18 OF 02
701 STORAGE & LIMEWORKING PLAN	921 DRAINAGE CALCULATIONS IN/WR HYDRAULICS SHEET 19 OF 02
702 EXTERNAL CATCHMENT PLAN	922 DRAINAGE CALCULATIONS IN/WR HYDRAULICS SHEET 20 OF 02
DRAINAGE CATCHMENT PLANS	923 DRAINAGE CALCULATIONS IN/WR HYDRAULICS SHEET 21 OF 02
801 EXTERNAL CATCHMENT PLAN	924 DRAINAGE CALCULATIONS IN/WR HYDRAULICS SHEET 22 OF 02
DRAINAGE LONGITUDINAL SECTIONS	925 DRAINAGE CALCULATIONS IN/WR HYDRAULICS SHEET 23 OF 02
901 DRAINAGE LONGITUDINAL SECTIONS LINE N+30	926 DRAINAGE CALCULATIONS IN/WR HYDRAULICS SHEET 24 OF 02
902 DRAINAGE LONGITUDINAL SECTIONS LINE N+30 & 503	927 DRAINAGE CALCULATIONS IN/WR HYDRAULICS SHEET 25 OF 02
903 DRAINAGE LONGITUDINAL SECTIONS LINE N+50	928 DRAINAGE CALCULATIONS IN/WR HYDRAULICS SHEET 26 OF 02
904 DRAINAGE LONGITUDINAL SECTIONS LINE N+50	929 DRAINAGE CALCULATIONS IN/WR HYDRAULICS SHEET 27 OF 02
905 DRAINAGE LONGITUDINAL SECTIONS LINE N+50	930 DRAINAGE CALCULATIONS IN/WR HYDRAULICS SHEET 28 OF 02
906 DRAINAGE LONGITUDINAL SECTIONS LINE N+50	931 DRAINAGE CALCULATIONS IN/WR HYDRAULICS SHEET 29 OF 02
907 DRAINAGE LONGITUDINAL SECTIONS LINE N+50	932 DRAINAGE CALCULATIONS IN/WR HYDRAULICS SHEET 30 OF 02
908 DRAINAGE LONGITUDINAL SECTIONS LINE N+50	933 DRAINAGE CALCULATIONS IN/WR HYDRAULICS SHEET 31 OF 02
909 DRAINAGE LONGITUDINAL SECTIONS LINE N+50	934 DRAINAGE CALCULATIONS IN/WR HYDRAULICS SHEET 32 OF 02
910 DRAINAGE LONGITUDINAL SECTIONS LINE N+50	935 DRAINAGE CALCULATIONS IN/WR HYDRAULICS SHEET 33 OF 02
911 DRAINAGE LONGITUDINAL SECTIONS LINE N+50	936 DRAINAGE CALCULATIONS IN/WR HYDRAULICS SHEET 34 OF 02
912 DRAINAGE LONGITUDINAL SECTIONS LINE N+50	937 DRAINAGE CALCULATIONS IN/WR HYDRAULICS SHEET 35 OF 02
913 DRAINAGE LONGITUDINAL SECTIONS LINE N+50	938 DRAINAGE CALCULATIONS IN/WR HYDRAULICS SHEET 36 OF 02
914 DRAINAGE LONGITUDINAL SECTIONS LINE N+50	939 DRAINAGE CALCULATIONS IN/WR HYDRAULICS SHEET 37 OF 02
915 DRAINAGE LONGITUDINAL SECTIONS LINE N+50	940 DRAINAGE CALCULATIONS IN/WR HYDRAULICS SHEET 38 OF 02
916 DRAINAGE LONGITUDINAL SECTIONS LINE N+50	941 DRAINAGE CALCULATIONS IN/WR HYDRAULICS SHEET 39 OF 02
917 DRAINAGE LONGITUDINAL SECTIONS LINE N+50	942 DRAINAGE CALCULATIONS IN/WR HYDRAULICS SHEET 40 OF 02
918 DRAINAGE LONGITUDINAL SECTIONS LINE N+50	943 DRAINAGE CALCULATIONS IN/WR HYDRAULICS SHEET 41 OF 02
919 DRAINAGE LONGITUDINAL SECTIONS LINE N+50	944 DRAINAGE CALCULATIONS IN/WR HYDRAULICS SHEET 42 OF 02
920 DRAINAGE LONGITUDINAL SECTIONS LINE N+50	945 DRAINAGE CALCULATIONS IN/WR HYDRAULICS SHEET 43 OF 02
921 DRAINAGE LONGITUDINAL SECTIONS LINE N+50	946 DRAINAGE CALCULATIONS IN/WR HYDRAULICS SHEET 44 OF 02
922 DRAINAGE LONGITUDINAL SECTIONS LINE N+50	947 DRAINAGE CALCULATIONS IN/WR HYDRAULICS SHEET 45 OF 02
923 DRAINAGE LONGITUDINAL SECTIONS LINE N+50	948 DRAINAGE CALCULATIONS IN/WR HYDRAULICS SHEET 46 OF 02
924 DRAINAGE LONGITUDINAL SECTIONS LINE N+50	949 DRAINAGE CALCULATIONS IN/WR HYDRAULICS SHEET 47 OF 02
925 DRAINAGE LONGITUDINAL SECTIONS LINE N+50	950 DRAINAGE CALCULATIONS IN/WR HYDRAULICS SHEET 48 OF 02
926 DRAINAGE LONGITUDINAL SECTIONS LINE N+50	951 DRAINAGE CALCULATIONS IN/WR HYDRAULICS SHEET 49 OF 02
927 DRAINAGE LONGITUDINAL SECTIONS LINE N+50	952 DRAINAGE CALCULATIONS IN/WR HYDRAULICS SHEET 50 OF 02
928 DRAINAGE LONGITUDINAL SECTIONS LINE N+50	953 DRAINAGE CALCULATIONS IN/WR HYDRAULICS SHEET 51 OF 02
929 DRAINAGE LONGITUDINAL SECTIONS LINE N+50	954 DRAINAGE CALCULATIONS IN/WR HYDRAULICS SHEET 52 OF 02
930 DRAINAGE LONGITUDINAL SECTIONS LINE N+50	955 DRAINAGE CALCULATIONS IN/WR HYDRAULICS SHEET 53 OF 02
931 DRAINAGE LONGITUDINAL SECTIONS LINE N+50	956 DRAINAGE CALCULATIONS IN/WR HYDRAULICS SHEET 54 OF 02
932 DRAINAGE LONGITUDINAL SECTIONS LINE N+50	957 DRAINAGE CALCULATIONS IN/WR HYDRAULICS SHEET 55 OF 02
933 DRAINAGE LONGITUDINAL SECTIONS LINE N+50	958 DRAINAGE CALCULATIONS IN/WR HYDRAULICS SHEET 56 OF 02
934 DRAINAGE LONGITUDINAL SECTIONS LINE N+50	959 DRAINAGE CALCULATIONS IN/WR HYDRAULICS SHEET 57 OF 02
935 DRAINAGE LONGITUDINAL SECTIONS LINE N+50	960 DRAINAGE CALCULATIONS IN/WR HYDRAULICS SHEET 58 OF 02
936 DRAINAGE LONGITUDINAL SECTIONS LINE N+50	961 DRAINAGE CALCULATIONS IN/WR HYDRAULICS SHEET 59 OF 02
937 DRAINAGE LONGITUDINAL SECTIONS LINE N+50	962 DRAINAGE CALCULATIONS IN/WR HYDRAULICS SHEET 60 OF 02
938 DRAINAGE LONGITUDINAL SECTIONS LINE N+50	963 DRAINAGE CALCULATIONS IN/WR HYDRAULICS SHEET 61 OF 02
939 DRAINAGE LONGITUDINAL SECTIONS LINE N+50	964 DRAINAGE CALCULATIONS IN/WR HYDRAULICS SHEET 62 OF 02
940 DRAINAGE LONGITUDINAL SECTIONS LINE N+50	965 DRAINAGE CALCULATIONS IN/WR HYDRAULICS SHEET 63 OF 02
941 DRAINAGE LONGITUDINAL SECTIONS LINE N+50	966 DRAINAGE CALCULATIONS IN/WR HYDRAULICS SHEET 64 OF 02
942 DRAINAGE LONGITUDINAL SECTIONS LINE N+50	967 DRAINAGE CALCULATIONS IN/WR HYDRAULICS SHEET 65 OF 02
943 DRAINAGE LONGITUDINAL SECTIONS LINE N+50	968 DRAINAGE CALCULATIONS IN/WR HYDRAULICS SHEET 66 OF 02
944 DRAINAGE LONGITUDINAL SECTIONS LINE N+50	969 DRAINAGE CALCULATIONS IN/WR HYDRAULICS SHEET 67 OF 02
945 DRAINAGE LONGITUDINAL SECTIONS LINE N+50	970 DRAINAGE CALCULATIONS IN/WR HYDRAULICS SHEET 68 OF 02
946 DRAINAGE LONGITUDINAL SECTIONS LINE N+50	971 DRAINAGE CALCULATIONS IN/WR HYDRAULICS SHEET 69 OF 02
947 DRAINAGE LONGITUDINAL SECTIONS LINE N+50	972 DRAINAGE CALCULATIONS IN/WR HYDRAULICS SHEET 70 OF 02
948 DRAINAGE LONGITUDINAL SECTIONS LINE N+50	973 DRAINAGE CALCULATIONS IN/WR HYDRAULICS SHEET 71 OF 02
949 DRAINAGE LONGITUDINAL SECTIONS LINE N+50	974 DRAINAGE CALCULATIONS IN/WR HYDRAULICS SHEET 72 OF 02
950 DRAINAGE LONGITUDINAL SECTIONS LINE N+50	975 DRAINAGE CALCULATIONS IN/WR HYDRAULICS SHEET 73 OF 02
951 DRAINAGE LONGITUDINAL SECTIONS LINE N+50	976 DRAINAGE CALCULATIONS IN/WR HYDRAULICS SHEET 74 OF 02
952 DRAINAGE LONGITUDINAL SECTIONS LINE N+50	977 DRAINAGE CALCULATIONS IN/WR HYDRAULICS SHEET 75 OF 02
953 DRAINAGE LONGITUDINAL SECTIONS LINE N+50	978 DRAINAGE CALCULATIONS IN/WR HYDRAULICS SHEET 76 OF 02
954 DRAINAGE LONGITUDINAL SECTIONS LINE N+50	979 DRAINAGE CALCULATIONS IN/WR HYDRAULICS SHEET 77 OF 02
955 DRAINAGE LONGITUDINAL SECTIONS LINE N+50	980 DRAINAGE CALCULATIONS IN/WR HYDRAULICS SHEET 78 OF 02
956 DRAINAGE LONGITUDINAL SECTIONS LINE N+50	981 DRAINAGE CALCULATIONS IN/WR HYDRAULICS SHEET 79 OF 02
957 DRAINAGE LONGITUDINAL SECTIONS LINE N+50	982 DRAINAGE CALCULATIONS IN/WR HYDRAULICS SHEET 80 OF 02
958 DRAINAGE LONGITUDINAL SECTIONS LINE N+50	983 DRAINAGE CALCULATIONS IN/WR HYDRAULICS SHEET 81 OF 02
959 DRAINAGE LONGITUDINAL SECTIONS LINE N+50	984 DRAINAGE CALCULATIONS IN/WR HYDRAULICS SHEET 82 OF 02
960 DRAINAGE LONGITUDINAL SECTIONS LINE N+50	985 DRAINAGE CALCULATIONS IN/WR HYDRAULICS SHEET 83 OF 02
961 DRAINAGE LONGITUDINAL SECTIONS LINE N+50	986 DRAINAGE CALCULATIONS IN/WR HYDRAULICS SHEET 84 OF 02
962 DRAINAGE LONGITUDINAL SECTIONS LINE N+50	987 DRAINAGE CALCULATIONS IN/WR HYDRAULICS SHEET 85 OF 02
963 DRAINAGE LONGITUDINAL SECTIONS LINE N+50	988 DRAINAGE CALCULATIONS IN/WR HYDRAULICS SHEET 86 OF 02
964 DRAINAGE LONGITUDINAL SECTIONS LINE N+50	989 DRAINAGE CALCULATIONS IN/WR HYDRAULICS SHEET 87 OF 02
965 DRAINAGE LONGITUDINAL SECTIONS LINE N+50	990 DRAINAGE CALCULATIONS IN/WR HYDRAULICS SHEET 88 OF 02
966 DRAINAGE LONGITUDINAL SECTIONS LINE N+50	991 DRAINAGE CALCULATIONS IN/WR HYDRAULICS SHEET 89 OF 02
967 DRAINAGE LONGITUDINAL SECTIONS LINE N+50	992 DRAINAGE CALCULATIONS IN/WR HYDRAULICS SHEET 90 OF 02
968 DRAINAGE LONGITUDINAL SECTIONS LINE N+50	993 DRAINAGE CALCULATIONS IN/WR HYDRAULICS SHEET 91 OF 02
969 DRAINAGE LONGITUDINAL SECTIONS LINE N+50	994 DRAINAGE CALCULATIONS IN/WR HYDRAULICS SHEET 92 OF 02
970 DRAINAGE LONGITUDINAL SECTIONS LINE N+50	995 DRAINAGE CALCULATIONS IN/WR HYDRAULICS SHEET 93 OF 02
971 DRAINAGE LONGITUDINAL SECTIONS LINE N+50	996 DRAINAGE CALCULATIONS IN/WR HYDRAULICS SHEET 94 OF 02
972 DRAINAGE LONGITUDINAL SECTIONS LINE N+50	997 DRAINAGE CALCULATIONS IN/WR HYDRAULICS SHEET 95 OF 02
973 DRAINAGE LONGITUDINAL SECTIONS LINE N+50	998 DRAINAGE CALCULATIONS IN/WR HYDRAULICS SHEET 96 OF 02
974 DRAINAGE LONGITUDINAL SECTIONS LINE N+50	999 DRAINAGE CALCULATIONS IN/WR HYDRAULICS SHEET 97 OF 02
975 DRAINAGE LONGITUDINAL SECTIONS LINE N+50	1000 DRAINAGE CALCULATIONS IN/WR HYDRAULICS SHEET 98 OF 02
976 DRAINAGE LONGITUDINAL SECTIONS LINE N+50	1001 DRAINAGE CALCULATIONS IN/WR HYDRAULICS SHEET 99 OF 02
977 DRAINAGE LONGITUDINAL SECTIONS LINE N+50	1002 DRAINAGE CALCULATIONS IN/WR HYDRAULICS SHEET 100 OF 02

**CATHERINE PARK ESTATE STAGE 5
ROAD & DRAINAGE DESIGN**

PROJECT NO: X12249.05
 DATE: 5
 DESIGNER: CC
 CHECKER: 73/11/2017
 DRAWING NO: 000
 SHEET NO: 1



LOCAL TRAFFIC COMMITTEE

LTC09

SUBJECT: WALLARAH CIRCUIT AND LONG REEF CIRCUIT, GREGORY HILLS - SIGNAGE, LINEMARKING AND DEVICES ASSOCIATED WITH THE DEVELOPMENT OF GREGORY HILLS, STAGE 3B
FROM: Manager Assets, Design & Traffic Services
TRIM #: 18/70202

ELECTRONIC MEETING ITEM DATE: 4 January 2018

PURPOSE OF REPORT

To document approval previously provided by the Local Traffic Committee through an Electronic Meeting, for signage and linemarking plans associated with the construction of new roads associated with the development of Gregory Hills, Stage 3B.

MAIN REPORT

Signage and linemarking plans have been received by Council for the construction of new roads for the development in Gregory Hills, Stage 3B. The locations are highlighted on **Attachment 1**.

The Engineering Drawing No. 210153-3B-CC651 Rev. 5 and 210153-3B-CC652, Rev. 5 prepared by Cardno provide details of the proposed signage and linemarking (**Attachment 2**). The plans are considered to be in accordance with Austroads, Australian Standards and RMS supplements for the placement of regulatory signage and linemarking and it is recommended that LTC supports the proposed measures.

Electronic Meeting Reference	Agreed recommendation of the Local Traffic Committee
2018/02	<p>The Local Traffic Committee recommends that Council, on Wallarah Circuit and Long Reef Circuit, Gregory Hills, approves the regulatory signage and linemarking associated with the development of Gregory Hills Stage 3B, as shown on the Engineering Drawing No. 210153-3B-CC651 Rev. 5 and 210153-3B-CC652, Rev. 5 subject to:</p> <ul style="list-style-type: none">i. The installation being completed by the applicant at their cost;ii. All signage being sign size A; andiii. Street lighting levels for devices being in accordance with Australian Standard AS/NZS 1158, subject to further Council approval of the lighting design.

This recommendation was supported unanimously by the four voting members.

This recommendation has been resolved by a Council Officer under Delegated Authority.



RECOMMENDED

That Council receives and notes the report on Wallarah Circuit and Long Reef Circuit, Gregory Hills – Signage, Line Marking and Devices associated with the Development of Gregory Hills, Stage 3B.

ATTACHMENTS

1. Site Location - Wallarah and Long Reef Circuits, Gregory Hills
2. Signage and Linemarking Plans - Wallarah and Long Reef Circuits, Gregory Hills

GREGORY HILLS RESIDENTIAL DEVELOPMENT ROAD AND DRAINAGE DESIGN CONSTRUCTION CERTIFICATE

STAGE 3B

DA/CC No.949 (1) /2016



DRAWING NO.	DESCRIPTION
20053-BE-0200	TITLE SHEET DRAWING LIST AND LOCALITY PLAN
20053-BE-0201	WALLS AND LEVELS
20053-BE-0202	PARALLEL DRIVE STAIRCASES
20053-BE-0203	CONCRETE DRIVEWAY
20053-BE-0204	CUT AND FILL PLAN
20053-BE-0205	4.0M SPACED CURB, PLAN AND SECTION TABLES
20053-BE-0206	SEWER AND RAINWATER OVERFLOW PLAN SHEET 1
20053-BE-0207	SEWER AND RAINWATER OVERFLOW PLAN SHEET 2
20053-BE-0208	SEWER AND RAINWATER OVERFLOW PLAN SHEET 3
20053-BE-0209	SEWER AND RAINWATER OVERFLOW PLAN SHEET 4
20053-BE-0210	SEWER AND RAINWATER OVERFLOW PLAN SHEET 5
20053-BE-0211	SEWER AND RAINWATER OVERFLOW PLAN SHEET 6
20053-BE-0212	SEWER AND RAINWATER OVERFLOW PLAN SHEET 7
20053-BE-0213	SEWER AND RAINWATER OVERFLOW PLAN SHEET 8
20053-BE-0214	SEWER AND RAINWATER OVERFLOW PLAN SHEET 9
20053-BE-0215	SEWER AND RAINWATER OVERFLOW PLAN SHEET 10
20053-BE-0216	SEWER AND RAINWATER OVERFLOW PLAN SHEET 11
20053-BE-0217	SEWER AND RAINWATER OVERFLOW PLAN SHEET 12
20053-BE-0218	SEWER AND RAINWATER OVERFLOW PLAN SHEET 13
20053-BE-0219	SEWER AND RAINWATER OVERFLOW PLAN SHEET 14
20053-BE-0220	SEWER AND RAINWATER OVERFLOW PLAN SHEET 15
20053-BE-0221	SEWER AND RAINWATER OVERFLOW PLAN SHEET 16
20053-BE-0222	SEWER AND RAINWATER OVERFLOW PLAN SHEET 17
20053-BE-0223	SEWER AND RAINWATER OVERFLOW PLAN SHEET 18
20053-BE-0224	SEWER AND RAINWATER OVERFLOW PLAN SHEET 19
20053-BE-0225	SEWER AND RAINWATER OVERFLOW PLAN SHEET 20
20053-BE-0226	SEWER AND RAINWATER OVERFLOW PLAN SHEET 21
20053-BE-0227	SEWER AND RAINWATER OVERFLOW PLAN SHEET 22
20053-BE-0228	SEWER AND RAINWATER OVERFLOW PLAN SHEET 23
20053-BE-0229	SEWER AND RAINWATER OVERFLOW PLAN SHEET 24
20053-BE-0230	SEWER AND RAINWATER OVERFLOW PLAN SHEET 25
20053-BE-0231	SEWER AND RAINWATER OVERFLOW PLAN SHEET 26
20053-BE-0232	SEWER AND RAINWATER OVERFLOW PLAN SHEET 27
20053-BE-0233	SEWER AND RAINWATER OVERFLOW PLAN SHEET 28
20053-BE-0234	SEWER AND RAINWATER OVERFLOW PLAN SHEET 29
20053-BE-0235	SEWER AND RAINWATER OVERFLOW PLAN SHEET 30
20053-BE-0236	SEWER AND RAINWATER OVERFLOW PLAN SHEET 31
20053-BE-0237	SEWER AND RAINWATER OVERFLOW PLAN SHEET 32
20053-BE-0238	SEWER AND RAINWATER OVERFLOW PLAN SHEET 33
20053-BE-0239	SEWER AND RAINWATER OVERFLOW PLAN SHEET 34
20053-BE-0240	SEWER AND RAINWATER OVERFLOW PLAN SHEET 35
20053-BE-0241	SEWER AND RAINWATER OVERFLOW PLAN SHEET 36
20053-BE-0242	SEWER AND RAINWATER OVERFLOW PLAN SHEET 37
20053-BE-0243	SEWER AND RAINWATER OVERFLOW PLAN SHEET 38
20053-BE-0244	SEWER AND RAINWATER OVERFLOW PLAN SHEET 39
20053-BE-0245	SEWER AND RAINWATER OVERFLOW PLAN SHEET 40
20053-BE-0246	SEWER AND RAINWATER OVERFLOW PLAN SHEET 41
20053-BE-0247	SEWER AND RAINWATER OVERFLOW PLAN SHEET 42
20053-BE-0248	SEWER AND RAINWATER OVERFLOW PLAN SHEET 43
20053-BE-0249	SEWER AND RAINWATER OVERFLOW PLAN SHEET 44
20053-BE-0250	SEWER AND RAINWATER OVERFLOW PLAN SHEET 45
20053-BE-0251	SEWER AND RAINWATER OVERFLOW PLAN SHEET 46
20053-BE-0252	SEWER AND RAINWATER OVERFLOW PLAN SHEET 47
20053-BE-0253	SEWER AND RAINWATER OVERFLOW PLAN SHEET 48
20053-BE-0254	SEWER AND RAINWATER OVERFLOW PLAN SHEET 49
20053-BE-0255	SEWER AND RAINWATER OVERFLOW PLAN SHEET 50
20053-BE-0256	SEWER AND RAINWATER OVERFLOW PLAN SHEET 51
20053-BE-0257	SEWER AND RAINWATER OVERFLOW PLAN SHEET 52
20053-BE-0258	SEWER AND RAINWATER OVERFLOW PLAN SHEET 53
20053-BE-0259	SEWER AND RAINWATER OVERFLOW PLAN SHEET 54
20053-BE-0260	SEWER AND RAINWATER OVERFLOW PLAN SHEET 55
20053-BE-0261	SEWER AND RAINWATER OVERFLOW PLAN SHEET 56
20053-BE-0262	SEWER AND RAINWATER OVERFLOW PLAN SHEET 57
20053-BE-0263	SEWER AND RAINWATER OVERFLOW PLAN SHEET 58
20053-BE-0264	SEWER AND RAINWATER OVERFLOW PLAN SHEET 59
20053-BE-0265	SEWER AND RAINWATER OVERFLOW PLAN SHEET 60
20053-BE-0266	SEWER AND RAINWATER OVERFLOW PLAN SHEET 61
20053-BE-0267	SEWER AND RAINWATER OVERFLOW PLAN SHEET 62
20053-BE-0268	SEWER AND RAINWATER OVERFLOW PLAN SHEET 63
20053-BE-0269	SEWER AND RAINWATER OVERFLOW PLAN SHEET 64
20053-BE-0270	SEWER AND RAINWATER OVERFLOW PLAN SHEET 65
20053-BE-0271	SEWER AND RAINWATER OVERFLOW PLAN SHEET 66
20053-BE-0272	SEWER AND RAINWATER OVERFLOW PLAN SHEET 67
20053-BE-0273	SEWER AND RAINWATER OVERFLOW PLAN SHEET 68
20053-BE-0274	SEWER AND RAINWATER OVERFLOW PLAN SHEET 69
20053-BE-0275	SEWER AND RAINWATER OVERFLOW PLAN SHEET 70
20053-BE-0276	SEWER AND RAINWATER OVERFLOW PLAN SHEET 71
20053-BE-0277	SEWER AND RAINWATER OVERFLOW PLAN SHEET 72
20053-BE-0278	SEWER AND RAINWATER OVERFLOW PLAN SHEET 73
20053-BE-0279	SEWER AND RAINWATER OVERFLOW PLAN SHEET 74
20053-BE-0280	SEWER AND RAINWATER OVERFLOW PLAN SHEET 75
20053-BE-0281	SEWER AND RAINWATER OVERFLOW PLAN SHEET 76
20053-BE-0282	SEWER AND RAINWATER OVERFLOW PLAN SHEET 77
20053-BE-0283	SEWER AND RAINWATER OVERFLOW PLAN SHEET 78
20053-BE-0284	SEWER AND RAINWATER OVERFLOW PLAN SHEET 79
20053-BE-0285	SEWER AND RAINWATER OVERFLOW PLAN SHEET 80
20053-BE-0286	SEWER AND RAINWATER OVERFLOW PLAN SHEET 81
20053-BE-0287	SEWER AND RAINWATER OVERFLOW PLAN SHEET 82
20053-BE-0288	SEWER AND RAINWATER OVERFLOW PLAN SHEET 83
20053-BE-0289	SEWER AND RAINWATER OVERFLOW PLAN SHEET 84
20053-BE-0290	SEWER AND RAINWATER OVERFLOW PLAN SHEET 85
20053-BE-0291	SEWER AND RAINWATER OVERFLOW PLAN SHEET 86
20053-BE-0292	SEWER AND RAINWATER OVERFLOW PLAN SHEET 87
20053-BE-0293	SEWER AND RAINWATER OVERFLOW PLAN SHEET 88
20053-BE-0294	SEWER AND RAINWATER OVERFLOW PLAN SHEET 89
20053-BE-0295	SEWER AND RAINWATER OVERFLOW PLAN SHEET 90
20053-BE-0296	SEWER AND RAINWATER OVERFLOW PLAN SHEET 91
20053-BE-0297	SEWER AND RAINWATER OVERFLOW PLAN SHEET 92
20053-BE-0298	SEWER AND RAINWATER OVERFLOW PLAN SHEET 93
20053-BE-0299	SEWER AND RAINWATER OVERFLOW PLAN SHEET 94
20053-BE-0300	SEWER AND RAINWATER OVERFLOW PLAN SHEET 95
20053-BE-0301	SEWER AND RAINWATER OVERFLOW PLAN SHEET 96
20053-BE-0302	SEWER AND RAINWATER OVERFLOW PLAN SHEET 97
20053-BE-0303	SEWER AND RAINWATER OVERFLOW PLAN SHEET 98
20053-BE-0304	SEWER AND RAINWATER OVERFLOW PLAN SHEET 99
20053-BE-0305	SEWER AND RAINWATER OVERFLOW PLAN SHEET 100

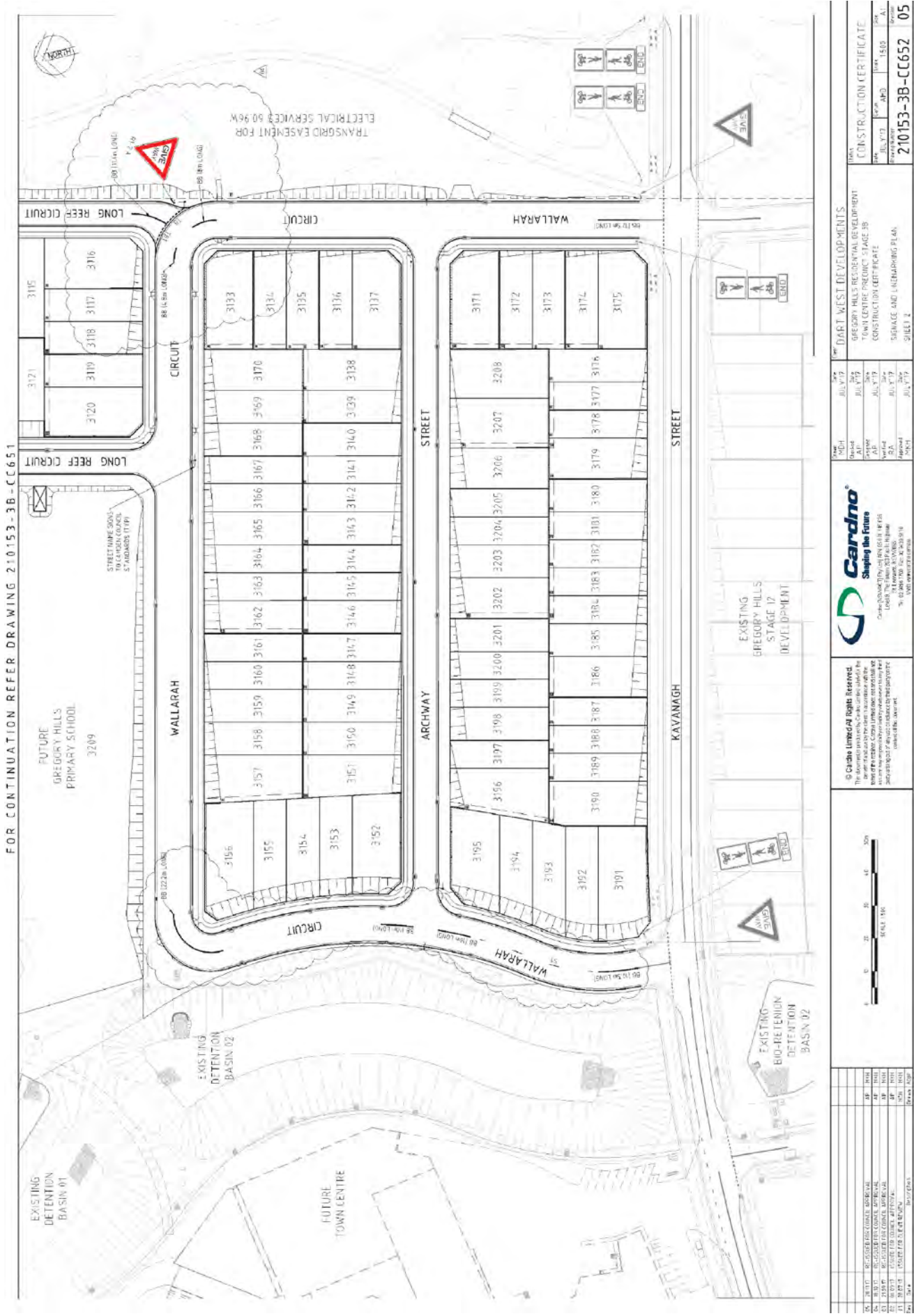


PROJECT NO. 210153-3B-CC000 REV. 04



FOR CONTINUATION REFER DRAWING 210153-3B-CC652

<p>© Cardno Limited Rights Reserved. The documents and drawings contained herein are the property of Cardno Limited and are not to be reproduced, stored in a retrieval system, or transmitted in any form or by any means, electronic, mechanical, photocopying, recording, or by any information storage and retrieval system, without the prior written permission of Cardno Limited.</p>	<p>Cardno Shaping the Future</p> <p>Cardno Australia Pty Ltd Level 17, 100 Collins Street Melbourne, VIC 3000 Tel: 03 9473 3000 Fax: 03 9473 3010 www.cardno.com.au</p>	<p>DATE: JULY 17/18 DRAWN BY: J.A.P. CHECKED BY: J.A.P. APPROVED BY: J.A.P. PROJECT NO: 210153-3B-CC652</p>	<p>NO. DRAFT WEST DEVELOPMENTS GREGORY HILLS RECREATIONAL DEVELOPMENT TOWN CENTRE FREQUENT STAGE 3B CONSTRUCTION CERTIFICATE</p>	<p>DATE: JULY 17/18 DRAWN BY: J.A.P. CHECKED BY: J.A.P. APPROVED BY: J.A.P. PROJECT NO: 210153-3B-CC651</p>
---	---	---	---	---



NO.	DATE	BY	FOR
04	18.07.17	JG	APPROVED FOR SUBMITTAL
03	18.07.17	JG	APPROVED FOR SUBMITTAL
02	18.07.17	JG	APPROVED FOR SUBMITTAL
01	18.07.17	JG	APPROVED FOR SUBMITTAL

© Civico Limited Rights Reserved. The information on this plan is intended for use by the client only. No warranty is made by Civico Limited as to the accuracy of the information on this plan.

Scale 1:500

Scale 1:500

Cardno
Shaping the Future

Cardno (Australia) Pty Ltd
Level 11, 107 York Street
Sydney NSW 2000
Tel: 61 2 9215 0000 Fax: 61 2 9215 0009

DAFT WEST DEVELOPMENTS				
NO.	DATE	BY	FOR	
05	JULY 17	JG	APPROVED FOR SUBMITTAL	05
04	JULY 17	JG	APPROVED FOR SUBMITTAL	04
03	JULY 17	JG	APPROVED FOR SUBMITTAL	03
02	JULY 17	JG	APPROVED FOR SUBMITTAL	02
01	JULY 17	JG	APPROVED FOR SUBMITTAL	01

CONSTRUCTION CERTIFICATE

210153-3B-CC652

Sheet 2 of 3



LOCAL TRAFFIC COMMITTEE

LTC10

SUBJECT: RIXON STREET AND SEARLE WAY, ORAN PARK - SIGNAGE, LINEMARKING AND DEVICES ASSOCIATED WITH THE DEVELOPMENT OF ORAN PARK, TRANCHE 9 STAGE 3

FROM: Manager Assets, Design & Traffic Services

TRIM #: 18/72036

ELECTRONIC MEETING ITEM DATE: 8 January 2018

PURPOSE OF REPORT

To document approval previously provided by the Local Traffic Committee through an Electronic Meeting, for a signage and linemarking plan associated with the construction of new roads associated with the development of Oran Park, Tranche 9 Stage 3.

MAIN REPORT

A signage and linemarking plan has been received by Council for the construction of new roads for the development in Oran Park, Tranche 9 Stage 3. The locations are highlighted on **Attachment 1**. This is related to development application number DA/2016/336/1.

The Engineering Drawing No. 82017057-001 C1071 Rev. F prepared by Cardno provides details of the proposed signage and linemarking (**Attachment 2**). The plan is considered to be in accordance with Austroads, Australian Standards and RMS supplements for the placement of regulatory signage and linemarking. It is recommended that LTC supports the proposed measures.

Electronic Meeting Reference	Agreed recommendation of the Local Traffic Committee
2018/03	<p>The Local Traffic Committee recommends that Council approves, on Rixon Street and Searle Way, the regulatory signs and line marking associated with the development of Oran Park, Tranche 9 Stage 3, as shown on the Engineering Drawing No. 82017057-001 C1071 Rev. F subject to:</p> <ul style="list-style-type: none"> i. the installation being completed by the applicant at its cost; ii. all signage being sign size A; and iii. street lighting levels for devices being in accordance with Australian Standard AS/NZS 1158, subject to further Council approval of the lighting design.

This recommendation was supported unanimously by the four voting members.

This recommendation has been resolved by a Council Officer under Delegated Authority.

RECOMMENDED

That Council receives and notes the report on Rixon Street and Searle Way, Oran Park – Signage, Line Marking and Devices associated with the Development of Oran Park, Tranche 9 Stage 3.

ATTACHMENTS

1. Site Location - Rixon Street and Searle Way, Oran Park
2. Signage and Linemarking Plan - Rixon Street and Searle Way, Oran Park



LOCALITY PLAN
SCALE 1:1000

DRAWINGS	DESCRIPTION
82017057 001	CONCEPT PLAN
82017057 002	CONCEPT PLAN
82017057 003	CONCEPT PLAN
82017057 004	CONCEPT PLAN
82017057 005	CONCEPT PLAN
82017057 006	CONCEPT PLAN
82017057 007	CONCEPT PLAN
82017057 008	CONCEPT PLAN
82017057 009	CONCEPT PLAN
82017057 010	CONCEPT PLAN
82017057 011	CONCEPT PLAN
82017057 012	CONCEPT PLAN
82017057 013	CONCEPT PLAN
82017057 014	CONCEPT PLAN
82017057 015	CONCEPT PLAN
82017057 016	CONCEPT PLAN
82017057 017	CONCEPT PLAN
82017057 018	CONCEPT PLAN
82017057 019	CONCEPT PLAN
82017057 020	CONCEPT PLAN
82017057 021	CONCEPT PLAN
82017057 022	CONCEPT PLAN
82017057 023	CONCEPT PLAN
82017057 024	CONCEPT PLAN
82017057 025	CONCEPT PLAN
82017057 026	CONCEPT PLAN
82017057 027	CONCEPT PLAN
82017057 028	CONCEPT PLAN
82017057 029	CONCEPT PLAN
82017057 030	CONCEPT PLAN
82017057 031	CONCEPT PLAN
82017057 032	CONCEPT PLAN
82017057 033	CONCEPT PLAN
82017057 034	CONCEPT PLAN
82017057 035	CONCEPT PLAN
82017057 036	CONCEPT PLAN
82017057 037	CONCEPT PLAN
82017057 038	CONCEPT PLAN
82017057 039	CONCEPT PLAN
82017057 040	CONCEPT PLAN
82017057 041	CONCEPT PLAN
82017057 042	CONCEPT PLAN
82017057 043	CONCEPT PLAN
82017057 044	CONCEPT PLAN
82017057 045	CONCEPT PLAN
82017057 046	CONCEPT PLAN
82017057 047	CONCEPT PLAN
82017057 048	CONCEPT PLAN
82017057 049	CONCEPT PLAN
82017057 050	CONCEPT PLAN
82017057 051	CONCEPT PLAN
82017057 052	CONCEPT PLAN
82017057 053	CONCEPT PLAN
82017057 054	CONCEPT PLAN
82017057 055	CONCEPT PLAN
82017057 056	CONCEPT PLAN
82017057 057	CONCEPT PLAN
82017057 058	CONCEPT PLAN
82017057 059	CONCEPT PLAN
82017057 060	CONCEPT PLAN
82017057 061	CONCEPT PLAN
82017057 062	CONCEPT PLAN
82017057 063	CONCEPT PLAN
82017057 064	CONCEPT PLAN
82017057 065	CONCEPT PLAN
82017057 066	CONCEPT PLAN
82017057 067	CONCEPT PLAN
82017057 068	CONCEPT PLAN
82017057 069	CONCEPT PLAN
82017057 070	CONCEPT PLAN
82017057 071	CONCEPT PLAN
82017057 072	CONCEPT PLAN
82017057 073	CONCEPT PLAN
82017057 074	CONCEPT PLAN
82017057 075	CONCEPT PLAN
82017057 076	CONCEPT PLAN
82017057 077	CONCEPT PLAN
82017057 078	CONCEPT PLAN
82017057 079	CONCEPT PLAN
82017057 080	CONCEPT PLAN
82017057 081	CONCEPT PLAN
82017057 082	CONCEPT PLAN
82017057 083	CONCEPT PLAN
82017057 084	CONCEPT PLAN
82017057 085	CONCEPT PLAN
82017057 086	CONCEPT PLAN
82017057 087	CONCEPT PLAN
82017057 088	CONCEPT PLAN
82017057 089	CONCEPT PLAN
82017057 090	CONCEPT PLAN
82017057 091	CONCEPT PLAN
82017057 092	CONCEPT PLAN
82017057 093	CONCEPT PLAN
82017057 094	CONCEPT PLAN
82017057 095	CONCEPT PLAN
82017057 096	CONCEPT PLAN
82017057 097	CONCEPT PLAN
82017057 098	CONCEPT PLAN
82017057 099	CONCEPT PLAN
82017057 100	CONCEPT PLAN



URBAN GROWTH NSW STAGE 3 DETAILED DESIGN		URBAN GROWTH NSW STAGE 3 DETAILED DESIGN	
PROJECT NO: 82017057 DRAWING NO: 82017057 001 C:1001		PROJECT NO: 82017057 DRAWING NO: 82017057 001 C:1001	
DATE: 20/03/2018 DRAWN BY: [Name] CHECKED BY: [Name]		DATE: 20/03/2018 DRAWN BY: [Name] CHECKED BY: [Name]	
NOT TO BE USED FOR CONSTRUCTION PURPOSES		NOT TO BE USED FOR CONSTRUCTION PURPOSES	
SCALE: 1:1000		SCALE: 1:1000	
PROJECT NO: 82017057		PROJECT NO: 82017057	
DRAWING NO: 82017057 001 C:1001		DRAWING NO: 82017057 001 C:1001	



NOTES

1. SIGNAGE AND LINEMARKING SHALL COMPLY WITH THE AUSTRALIAN STANDARD FOR SIGNAGE AND LINEMARKING (AS/NZS 4546).
2. SIGNAGE SHALL BE PLACED AT THE APPROPRIATE LOCATION TO BE MOST EFFECTIVE AND VISIBLE TO ROAD USERS.
3. SIGNAGE SHALL BE PLACED AT THE APPROPRIATE LOCATION TO BE MOST EFFECTIVE AND VISIBLE TO ROAD USERS.
4. SIGNAGE SHALL BE PLACED AT THE APPROPRIATE LOCATION TO BE MOST EFFECTIVE AND VISIBLE TO ROAD USERS.
5. SIGNAGE SHALL BE PLACED AT THE APPROPRIATE LOCATION TO BE MOST EFFECTIVE AND VISIBLE TO ROAD USERS.
6. SIGNAGE SHALL BE PLACED AT THE APPROPRIATE LOCATION TO BE MOST EFFECTIVE AND VISIBLE TO ROAD USERS.
7. SIGNAGE SHALL BE PLACED AT THE APPROPRIATE LOCATION TO BE MOST EFFECTIVE AND VISIBLE TO ROAD USERS.
8. SIGNAGE SHALL BE PLACED AT THE APPROPRIATE LOCATION TO BE MOST EFFECTIVE AND VISIBLE TO ROAD USERS.
9. SIGNAGE SHALL BE PLACED AT THE APPROPRIATE LOCATION TO BE MOST EFFECTIVE AND VISIBLE TO ROAD USERS.
10. SIGNAGE SHALL BE PLACED AT THE APPROPRIATE LOCATION TO BE MOST EFFECTIVE AND VISIBLE TO ROAD USERS.



SIGNS AND LINEMARKING LAYOUT
SCALE 1:500

		<p>© Cardno Linemarking Rights Reserved. This document is the property of Cardno Linemarking. It is not to be used for any other purpose without the written consent of Cardno Linemarking. All rights reserved.</p>	<p>URBAN GROWTH NSW STAGE 3 DETAILED DESIGN SIGNAGE AND LINEMARKING LAYOUT PLAN</p>
<p>DATE: 15/03/2018 DRAWN BY: [Name] CHECKED BY: [Name] APPROVED BY: [Name]</p>	<p>DATE: 15/03/2018 DRAWN BY: [Name] CHECKED BY: [Name] APPROVED BY: [Name]</p>	<p>DATE: 15/03/2018 DRAWN BY: [Name] CHECKED BY: [Name] APPROVED BY: [Name]</p>	<p>DATE: 15/03/2018 DRAWN BY: [Name] CHECKED BY: [Name] APPROVED BY: [Name]</p>



LOCAL TRAFFIC COMMITTEE

LTC11

SUBJECT: AUSTRALIA DAY 2018 - REVISED TRAFFIC MANAGEMENT PLAN
FROM: Manager Assets, Design & Traffic Services
TRIM #: 18/72305

ELECTRONIC MEETING ITEM DATE: 23 January 2018

PURPOSE OF REPORT

To document approval previously provided by the Local Traffic Committee through an Electronic Meeting for a revised Traffic Management Plan for the temporary closure of roads in Camden CBD for the celebration of Australia Day 2018.

MAIN REPORT

The Camden Local Traffic Committee considered and recommended on TMP arrangements for Australia Day 2018 at the meeting of 19 December 2017. However, as previously advised to LTC members, on Police advice Camden Council has engaged a security expert to assess and mitigate hostile vehicle threats on the event. Based on the current security threat level, it has been recommended to target harden the event which has resulted in changes to the TMP.

In practice this will result in concrete barriers and vehicles placed at entry points to the parade as well as extensive pedestrian fencing, installed in three stages to minimise disruption to the non-event community. The traffic control plans are essentially the same as previously reported but the road closures times are longer due to the extra time needed for set up and take down.

The recommendation has been duly amended to reflect the new times which have been set conservatively. Busabout has been involved in the discussions and assisted with community notification. Council has advertised in newspapers and online and with directly affected premises.

Electronic Meeting Reference	Agreed recommendation of the Local Traffic Committee
2018/04	<p>The Local Traffic Committee recommends that Council:</p> <ul style="list-style-type: none"> a) gives concurrence for the closure of John Street between Argyle Street and Mitchell Street, Camden, from 6am to 4.30pm on Friday, 26 January 2018, as per the certified Traffic Control Plan; b) gives concurrence for the closure of the following roads between 8am and 2.30pm on Friday, 26 January 2018, as per the certified Traffic Control Plan and the associated Special Event Transport Management Plan for the street parade: <ul style="list-style-type: none"> • Argyle Street (both sides) from Oxley Street to Hill Street; • Argyle Street (north side only) from Hill Street to Edward Street; • Murray Street from Argyle Street to Broughton Street; • Elizabeth Street from Argyle Street to Mitchell Street;

	<ul style="list-style-type: none">• John Street from Argyle Street to Broughton Street; and• Hill Street (west side) from Argyle Street to north of the access to John/Hill Streets car park; <p>c) gives concurrence for the closure of the following roads between 10am and 2.30pm on Friday, 26 January 2018, as per the certified Traffic Control Plan (and the associated Special Event Transport Management Plan for the street parade:</p> <ul style="list-style-type: none">• Cawdor Road from Barsden Street to Argyle Street;• Oxley Street from Argyle Street to south of the access to the southernmost off-street car park;• Argyle Street from Cawdor Road to Oxley Street; <p>d) gives concurrence for the above events subject to the following conditions:</p> <ul style="list-style-type: none">i. traffic Management arrangements shall be implemented in accordance with the approved Special Event Traffic Management Plans and associated certified Traffic Control Plans;ii. the event is controlled by NSW Police with support from RMS accredited traffic controllers;iii. the organisers providing proof of a minimum \$20 million Public Liability Insurance Policy and provide a copy to Council;iv. the organisers shall obtain NSW Police concurrence to the Special Event approval;v. the organisers shall maintain access for emergency vehicles along the sections of closed roads at all times;vi. temporary signage associated with the Traffic Control Plan shall be installed and removed at the end of the event at no cost to Council;vii. the event being advertised in local newspapers and on-street signage a minimum of seven days prior to the event; andviii. businesses along the closed road sections being advised of the traffic management arrangements in writing, by the organisers a minimum of 2 weeks prior to the event.
--	---

This recommendation was supported unanimously by the four voting members.

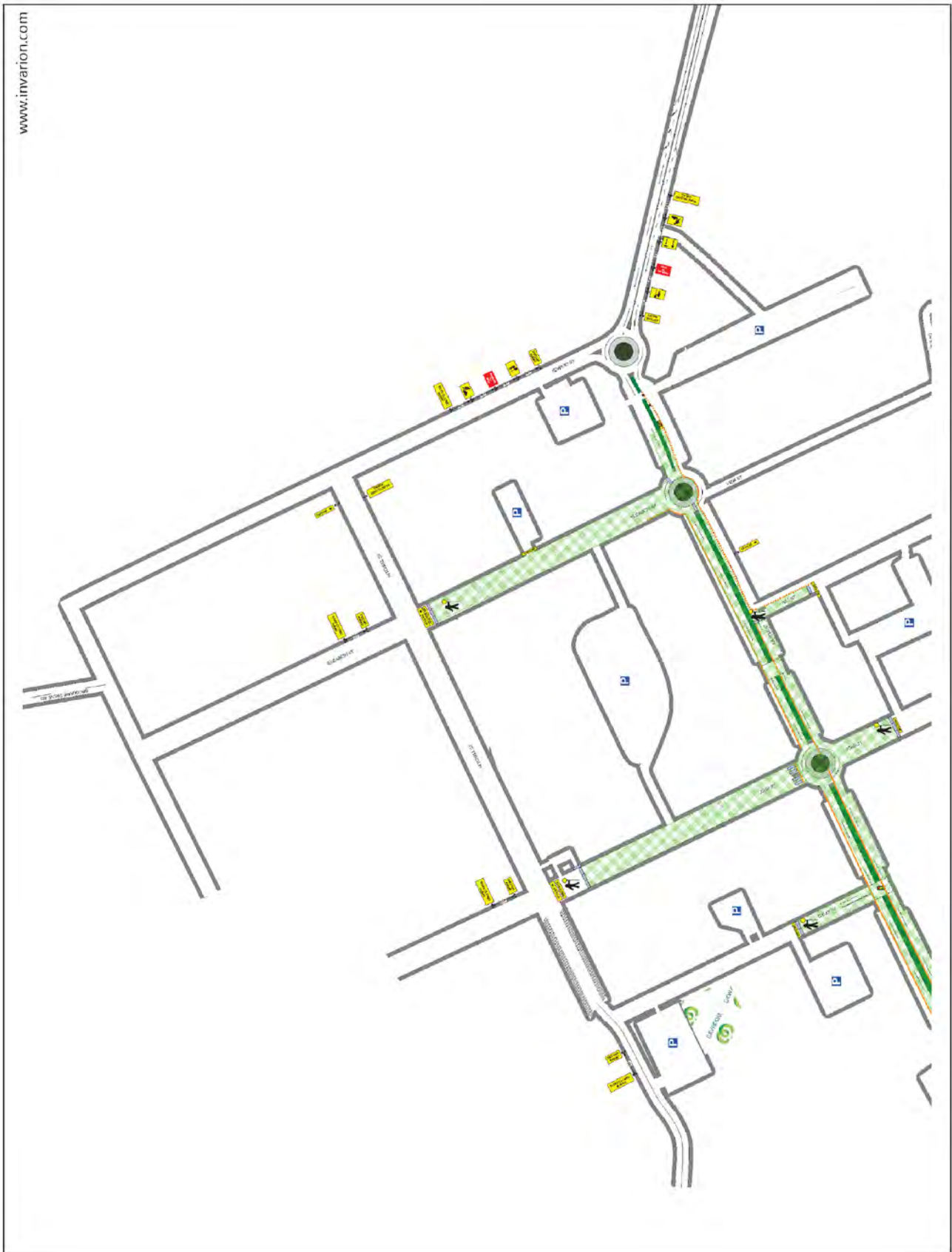
This recommendation has been resolved by a Council Officer under Delegated Authority.

RECOMMENDED

That Council receives and notes the report on Australia Day 2018 – Revised Traffic Management Plan.

ATTACHMENTS

1. Road Closure Overview Section 1
2. Road Closure Overview Section 2







LOCAL TRAFFIC COMMITTEE

LTC12

**SUBJECT: CENTRAL AVENUE, ORAN PARK - DATE NIGHT SPECIAL EVENT
TRANSPORT MANAGEMENT PLAN**

FROM: Manager Assets, Design & Traffic Services

TRIM #: 18/72377

ELECTRONIC MEETING ITEM DATE: 9 February 2018

PURPOSE OF REPORT

To document approval previously provided by the Local Traffic Committee through an Electronic Meeting for the closure of a short section of Central Avenue, Oran Park, in front of the Council Administration Building in order to conduct the 'Date Night' community event.

MAIN REPORT

Council seeks concurrence to close a short section of Central Avenue, Oran Park, in front of the Council building in order to conduct the 'Date Night' community event. The location is highlighted on **Attachment 1**.

The event will take place on Saturday 17 February 2018, from 5:30pm to 10:30pm. During this time it is proposed to close part of Central Avenue from Dairy Street, Oran Park. No residents or businesses will be affected by the proposed closure.

Due to consideration of possible security issues, the tipper truck will be placed to prevent vehicles driving through crowded places.

Electronic Meeting Reference	Agreed recommendation of the Local Traffic Committee
2018/05	<p>The Local Traffic Committee recommends that Council gives concurrence for the closure of a section of Central Avenue, Oran Park, from Dairy Street northwards, on Saturday, 17 February 2018, subject to the following conditions:</p> <ul style="list-style-type: none"> i. the event is classified as a Class 3 event under the RMS Guide to Traffic and Transport Management for Special Events; ii. traffic management arrangements shall be implemented in accordance with relevant RMS Guidelines; iii. traffic controllers shall be accredited by the RMS; iv. the organisers shall obtain NSW Police concurrence to the Special Event Approval; and v. the organisers shall maintain access for emergency vehicles along the closed section of road.

This recommendation was supported unanimously by the four voting members.

This recommendation has been resolved by a Council Officer under Delegated Authority.

RECOMMENDED

That Council receives and notes the report on Central Avenue, Oran Park – Date Night Special Event Transport Management Plan.

ATTACHMENTS

1. Site Location - Date Night Special Event - Central Avenue, Oran Park



LOCAL TRAFFIC COMMITTEE

LTC13

SUBJECT: CAWDOR ROAD / MITCHELL STREET / JOHN STREET / ARGYLE STREET, CAMDEN - CAMDEN SHOW 2018 - SPECIAL EVENT TRANSPORT MANAGEMENT PLAN

FROM: Manager Assets, Design & Traffic Services

TRIM #: 18/72527

ELECTRONIC MEETING ITEM DATE: 20 February 2018

PURPOSE OF REPORT

To document approval previously provided by the Local Traffic Committee through an Electronic Meeting for the proposed traffic management arrangements associated with the Camden Show, to be held on Friday, 16 March and Saturday, 17 March 2018.

MAIN REPORT

The Camden Show is programmed to take place on Friday, 16 March and Saturday, 17 March 2018 between 6.00am and 11.30pm. The annual event takes place in Onslow Park and the Bicentennial Equestrian Park. It is anticipated the event will attract approximately 40,000 participants and visitors. Off street parking for 1,300 vehicles has been identified within the confines of the event site.

As in previous years, it is proposed to conduct a fireworks display on the Saturday evening from approximately 9.00pm to 9.30pm. As an additional traffic control measure, the applicant has proposed to close John Street between Mitchell Street and Exeter Street. This closure is only required when there is a long queue on John Street. Marshalls will be provided at either end to enable access to the school and church sites.

This year, the Show Society is planning a moving street parade from 4.00pm to 4.30pm on Friday 16 March 2018. The parade will incorporate up to twelve vehicles, some of which will be drawn by oxen and/or horses. The parade procession will be marshalled at the closed section of John Street. The route heads south along John Street, west along Argyle Street to the intersection with Murray Street, around the roundabout heading east back along Argyle Street, left on John Street, then north to finish at the section of closed road. It is proposed that, as in previous years, the event is designated as Class 2.

Due to consideration of possible security issues, the following additional measures have been identified in consultation with NSW Police:

- Two vehicles to drive side by side at the rear of the parade to mitigate against hostile vehicle access.
- 60 metre long physical vehicle barrier to be placed on the footpath along the kerb extension on the western side of Cawdor Road / Argyle Street in the vicinity on the roundabout, throughout the event.



A Special Event Transport Management Plan has been prepared (see **Attachment 1**) incorporating a Traffic Control Plan (DWG No. 140561) (see **Attachment 2**) detailing the following elements:

Access and egress for the event

(Traffic Control Plan - Sheet 1)

- Exeter Street (western end) - vehicular access / egress for parking in Onslow Park and Bicentennial Equestrian Park via ticket booths;
- Cawdor Road (western side opposite the Camden RSL Club) - vehicular parking in the Bicentennial Equestrian Park;
- Cawdor Road (eastern side) - 40 metres No Stopping south of the RSL Club exit;
- Mitchell Street (west of intersection with Oxley Street) - pedestrian access egress via turnstiles west of car park; vehicular access/egress for people with disabilities accessed through the barriers at the intersection;
- Argyle Street (opposite the end of Murray Street) - pedestrian access / egress via turnstiles set 12 metres from the footpath to allow for queuing. Limited egress between 5.00 pm and 11.30 pm; and
- Cawdor Road / Onslow Park carpark roundabout - pedestrian egress after 5.00pm.

Cawdor Road / Argyle Street

(Traffic Control Plan - Sheets 1 and 2)

Traffic control measures proposed for Cawdor Road and Argyle Street are:

- road closure of Onslow Park entrance / exit off the roundabout intersection with Cawdor Road;
- barriers and bollards to close the road and associated "Side Road Closed Ahead" and "Changed Traffic Conditions Ahead" signs;
- reallocation of the unrestricted parallel parking on the northwest side of Cawdor Road from Onslow Park roundabout to Argyle Street to No Parking "Set Down and Pick Up Area";
- reallocation of the unrestricted parallel parking on the southeast side of Cawdor Road from Onslow Park roundabout to Argyle Street to "No Stopping";
- pedestrian barriers to control pedestrian flow in the vicinity of the Cawdor Road / Argyle Street / Murray Street roundabout;
- reallocation of 40 metres unrestricted parallel parking on the southeast side of Cawdor Road southwest of the exit from the RSL Club to "No Stopping"; and
- 60 metre long physical vehicle barriers to be placed on the footpath along the kerb extension on the western side of Cawdor Road / Argyle Street in the vicinity on the roundabout, throughout the event.

Mitchell Street

(Traffic Control Plan - Sheets 1 and 3)

Traffic control measures proposed for Mitchell Street are:

- road closure between the intersection with Oxley Street and Onslow Park;
- barriers to close the road and associated "Road Closed" and "Detour" signs;
- reallocation of the angle parking bays on the north side between Oxley Street and John Street to Bus Zone from 8.00 am to 4.00 pm on Friday 16 March 2018 and No Parking "Set Down and Pick Up Area" from 4.00pm on Friday 16 March to 12 midnight on Saturday 16 March 2018;
- traffic controllers placed at the road closure and the angle parking bays;

- barriers between the Woolworths Carpark in the Oxley/Mitchell Streets Carpark; and
- directional signage indicating parking for people with disabilities.

John Street - Street Parade

(Traffic Control Plan - Sheets 1, 4 and 5)

Traffic control measures proposed for John Street are:

- road closure between the intersection with Mitchell Street and Exeter Street;
- barriers to close the road and associated "Road Closed" signs and local access sign;
- u-turn facility and associated No Stopping at the northern end;
- advanced warning signage indicating the closure and location of Camden Show car parking;
- traffic controller placed at the southern end of Mitchell Street to facilitate access to the Camden Uniting Church and Camden Public School;
- during the street parade, traffic controllers placed at all the side roads to prevent interference of the parade;
- two vehicles to drive side by side at the rear of the parade to mitigate against hostile vehicle access; and
- By arrangement, NSW Police control of the street parade with Police vehicles at the front and rear of the parade.

Variable Message Signs

Four variable message signs have been proposed for the event:

- Cawdor Road (west side between Sheathers Lane and Barsden Street);
- Argyle Street (south side between Cowpasture Bridge and Rotary Cowpasture Reserve Entrance);
- Macquarie Grove Road (east side between Exeter Street and Camden Airport; and
- Old Hume Highway (west side) between Rosalie Avenue and Kelloway Avenue).

The variable message signs will give prior warning of the Camden Show, parking arrangements and the street parade.

Electronic Meeting Reference	Agreed recommendation of the Local Traffic Committee
2018/06	<p>The Local Traffic Committee recommends that Council:</p> <p>a) approves the following temporary measures between 5.00am and 12 midnight on Friday, 16 March and Saturday, 17 March 2018 as per the Special Event Transport Management Plan and the associated certified Traffic Control Plans (DWG 140561 Sheets 1 to 5) for the Camden Show 2018 and Street Parade:</p> <ul style="list-style-type: none"> i. closure of Mitchell Street from Oxley Street to Onslow Park; ii. closure of John Street between Exeter Street and Mitchell Street, except for local access; iii. reallocation of the unrestricted angle parking bays on the north side of Mitchell Street between Oxley Street and John Street to Bus Zone (8.00am to 4.00pm on Friday, 16 March



	<p>2018);</p> <ul style="list-style-type: none"> iv. reallocation of the unrestricted angle parking bays on the north side of Mitchell Street between Oxley Street and John Street to No Parking (4.00pm on Friday 16 March 2018 to 12 midnight on Saturday 17 March 2018); v. reallocation of the unrestricted parallel parking on the northwest side of Cawdor Road from Onslow Park roundabout to Argyle Street to No Parking; vi. reallocation of the unrestricted parallel parking on the southeast side of Cawdor Road from Onslow Park roundabout to Argyle Street to "No Stopping"; vii. pedestrian barriers around the Cawdor Road / Argyle Street / Murray Street roundabout and vehicle barriers on the western side; viii. reallocation of 40 metres unrestricted parallel parking on the southeast side of Cawdor Road southwest of the exit from the RSL Club to "No Stopping"; ix. Variable Message Signs at Cawdor Road between Sheathers Lane and Barsden Street, Argyle Street between Cowpasture Bridge and Rotary Cowpasture Reserve, Macquarie Grove Road between Exeter Street and Camden Airport and Old Hume Highway between Rosalie Avenue and Kelloway Avenue; and <p>b) approval is subject to the following conditions:</p> <ul style="list-style-type: none"> i. the event be classified as a Class 2 event under the RTA Guide to Traffic and Transport Management for Special Events, Version 3.4; ii. traffic management arrangements be implemented in accordance with the approved Special Event Transport Management Plan and associated certified Traffic Control Plans; iii. access for emergency vehicles be maintained at all times; iv. the organisers obtain NSW Police concurrence to the Special Event approval; v. the organisers provide proof of a minimum \$20 million Public Liability Insurance Policy noting Council as an interested party; vi. temporary signage associated with the Traffic Control Plan be installed and removed at the end of the event at no cost to Council; vii. traffic management arrangements are advertised in local newspapers, and on street signage a minimum of 7 days prior to the event; viii. businesses along the street parade route are notified in writing, a minimum of 7 days prior to the event; ix. emergency services (as advised by Council) and local bus companies are notified of the traffic management arrangements, a minimum of 7 days prior to the event; x. a disestablishment plan for temporary signage is submitted to Council prior to the event start date; and xi. the organisers securing any other necessary consents as advised by Council.
--	---

This recommendation was supported unanimously by the four voting members.

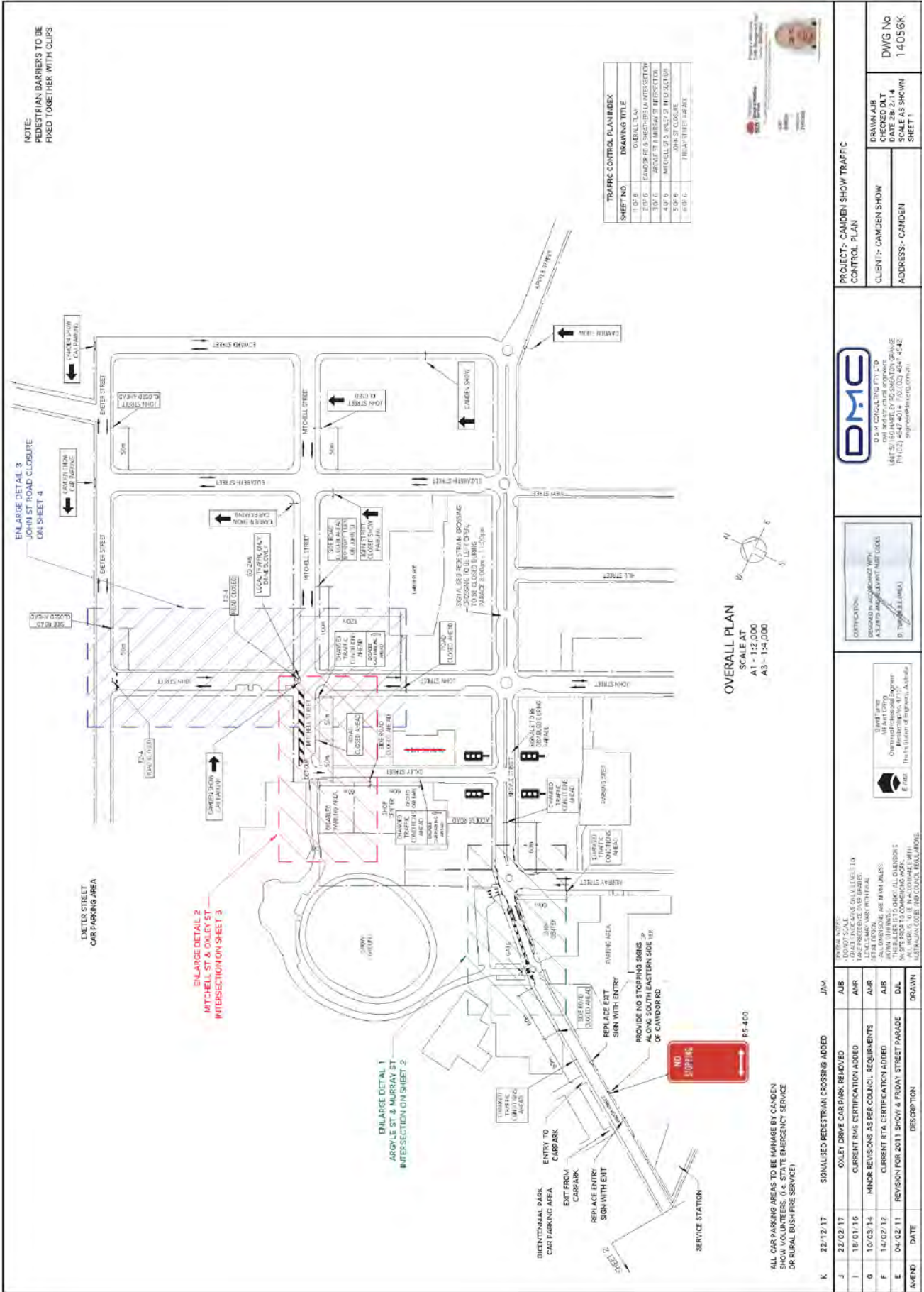
This recommendation has been resolved by a Council Officer under Delegated Authority.

RECOMMENDED

That Council receives and notes the report on Cawdor Road / Mitchell Street / John Street / Argyle Street, Camden – Camden Show 2018 – Special Event Transport Management Plan.

ATTACHMENTS

1. Traffic Control Plans - Camden Show 2018



NOTE:
PEDESTRIAN BARRIERS TO BE
FIXED TOGETHER WITH CLIPS

SHEET NO	DRAWING TITLE
1 OF 6	OVERALL PLAN
2 OF 6	ENLARGE DETAIL 1 - ARNLEY ST INTERSECTION
3 OF 6	ENLARGE DETAIL 2 - MITCHELL ST INTERSECTION
4 OF 6	ENLARGE DETAIL 3 - JOHN ST ROAD CLOSURE
5 OF 6	TRUCKS & BUSES
6 OF 6	TRUCKS & BUSES



OVERALL PLAN
SCALE AT
A1 - 1:2,000
A3 - 1:4,000

PROJECT - CAMDEN SHOW TRAFFIC CONTROL PLAN	
CLIENT - CAMDEN SHOW	DRAWN A/JB
ADDRESS - CAMDEN	CHECKED D/LT
	DATE 28/2/18
	DWG No 14056K
	SHEET 1

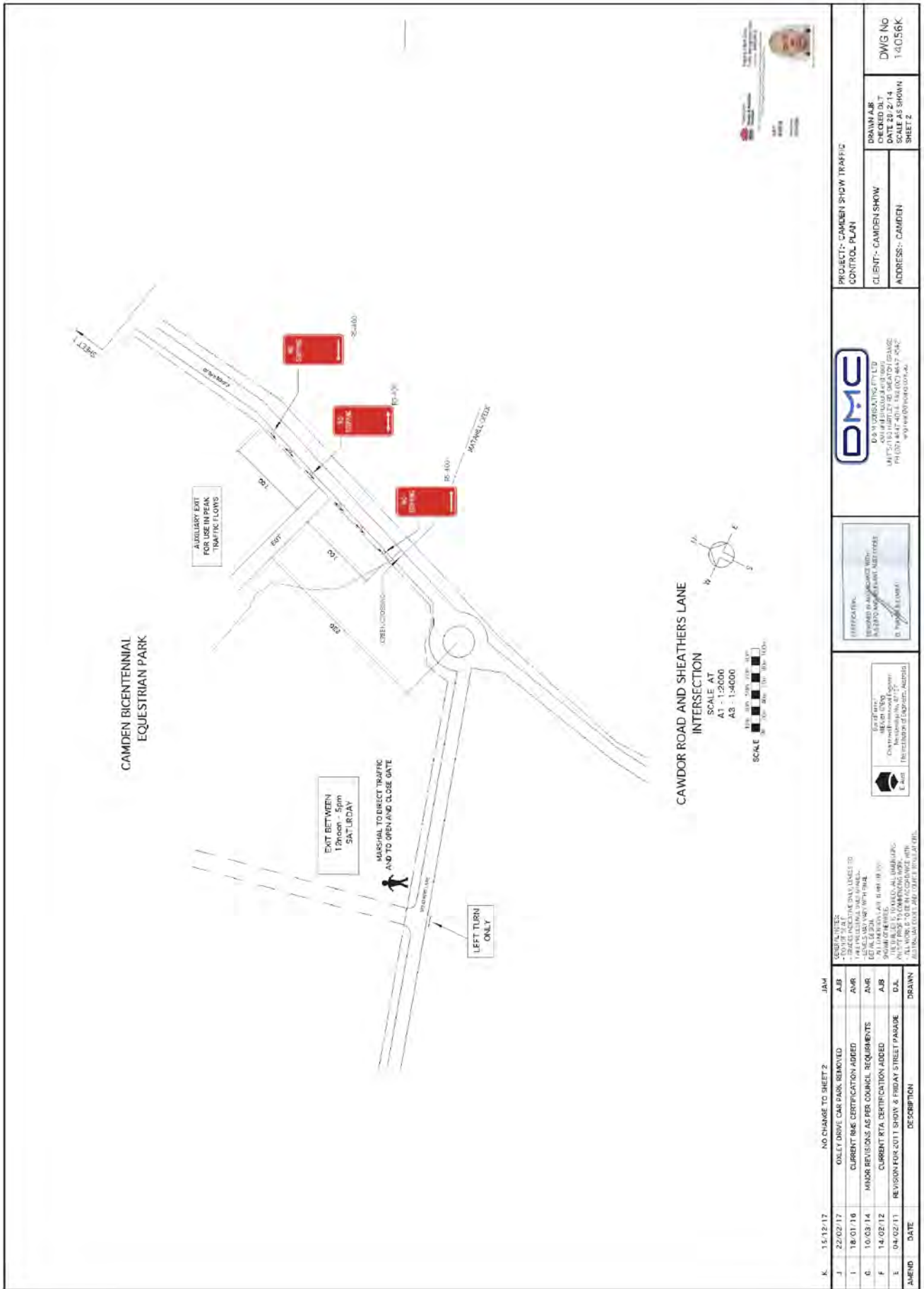
DMG
D.M. CONSULTING PTY LTD
165-171 (VIC) 165-171 (VIC) 165-171 (VIC) 165-171 (VIC)
165-171 (VIC) 165-171 (VIC) 165-171 (VIC) 165-171 (VIC)
165-171 (VIC) 165-171 (VIC) 165-171 (VIC) 165-171 (VIC)

DMG
D.M. CONSULTING PTY LTD
165-171 (VIC) 165-171 (VIC) 165-171 (VIC) 165-171 (VIC)
165-171 (VIC) 165-171 (VIC) 165-171 (VIC) 165-171 (VIC)

DMG
D.M. CONSULTING PTY LTD
165-171 (VIC) 165-171 (VIC) 165-171 (VIC) 165-171 (VIC)
165-171 (VIC) 165-171 (VIC) 165-171 (VIC) 165-171 (VIC)

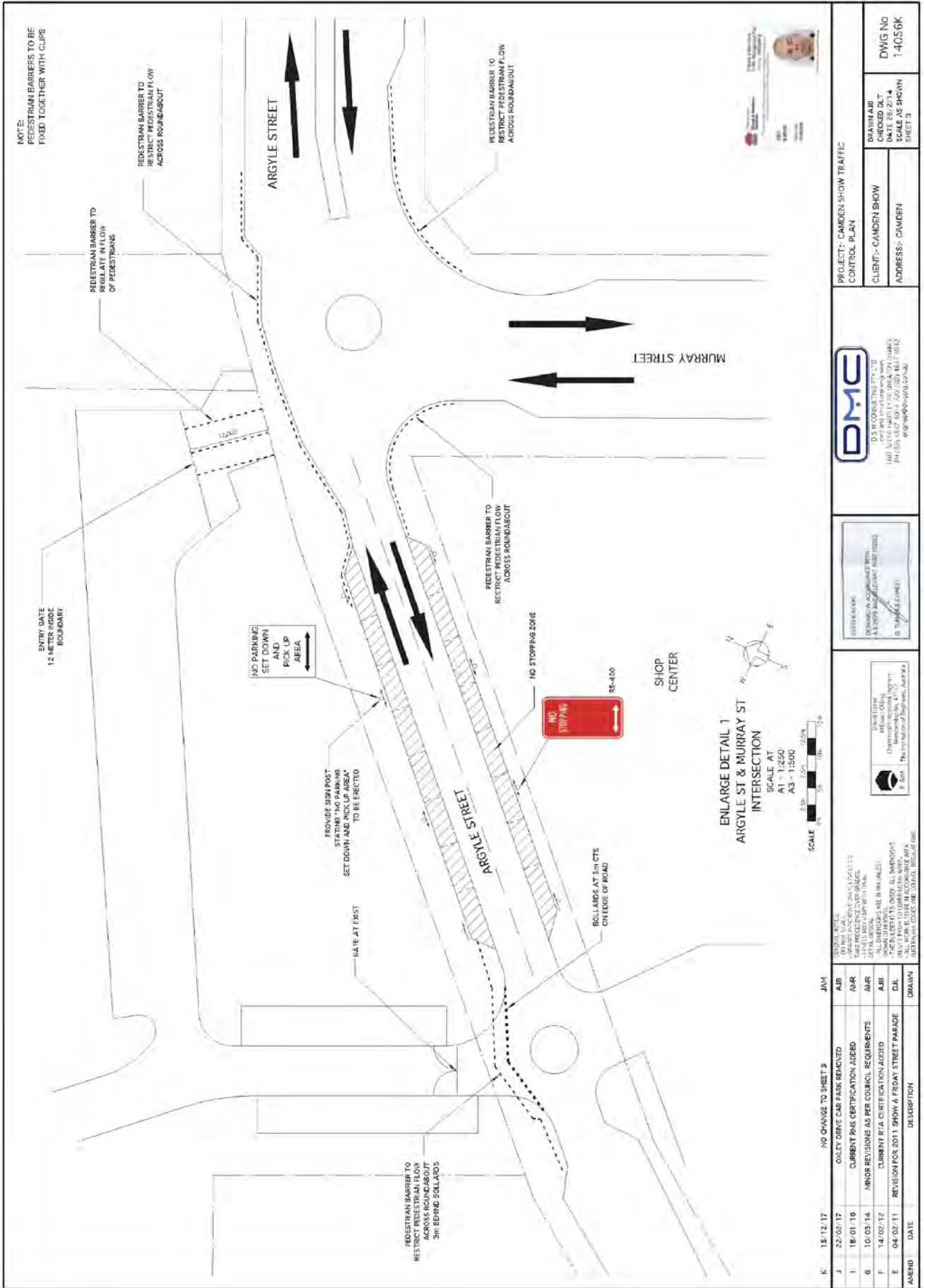
REV	DATE	DESCRIPTION	DRAWN
K	22/12/17	SIGNALISED PEDESTRIAN CROSSING ADDED	JAW
J	22/02/17	OXLEY DRIVE CARPARK REMOVED	AJB
I	18/01/16	CURRENT RPA CERTIFICATION ADDED	AJR
G	10/03/14	MINOR REVISIONS AS PER COUNCIL REQUIREMENTS	AJB
F	14/02/12	CURRENT RPA CERTIFICATION ADDED	AJB
E	04/02/11	REVISION FOR 2011 SHOW & FRIDAY STREET PARADE	D/L

ALL CAR PARKING AREAS TO BE MANAGED BY CAMDEN SHOW VOLUNTEERS. (i.e. STATE EMERGENCY SERVICE OR RURAL BUSH FIRE SERVICE)



LTC13

Attachment 1



PROJECT: CAMDEN SHOW TRAFFIC CONTROL PLAN	
CLIENT: CAMDEN SHOW	DRAWN BY: DWG No
ADDRESS: CAMDEN	SCALE AS SHOWN
	SHEET 3
	1:4056K

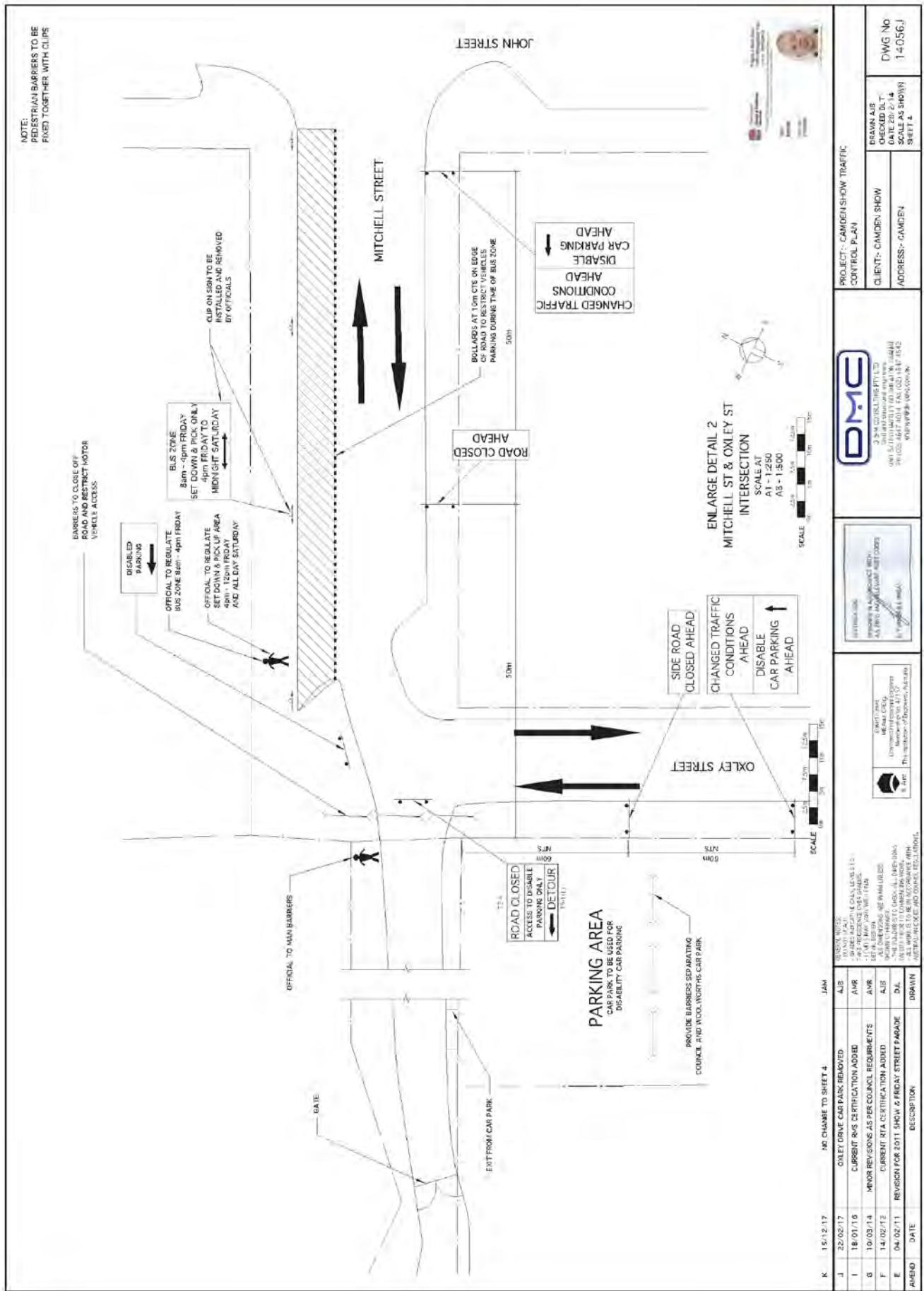
DMC
 D & M CONSULTING PTY LTD
 1/11 SOUTH PARK DRIVE, CAMDEN NSW 2323
 PH (02) 4877 0011 FAX (02) 4877 8512
 www.dmc.com.au

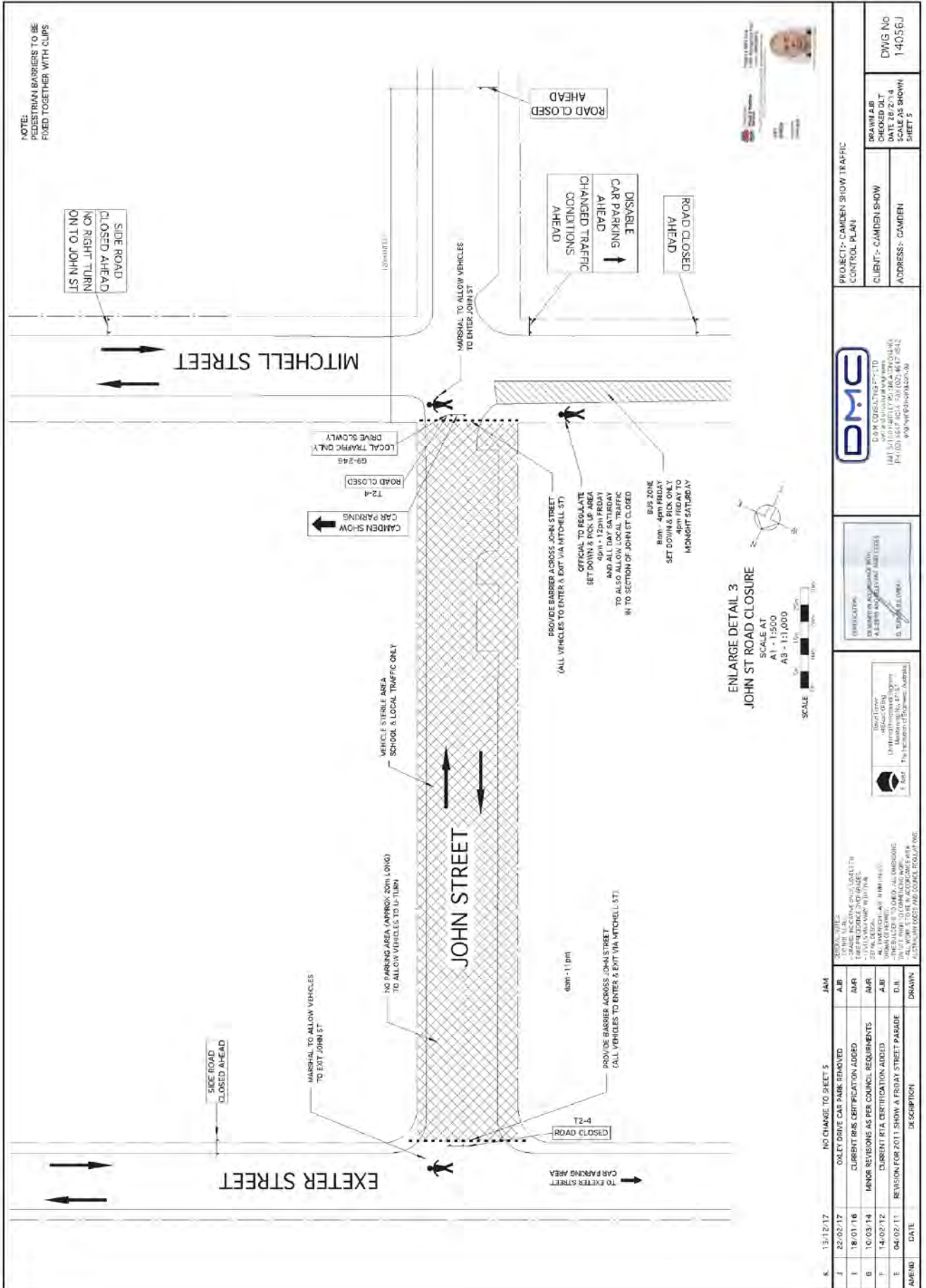
INTERFERING
 CHANGES ALLOWED WITH
 A 20% MAXIMUM ALERT ZONES
 (DANGER LINES)

DMC LIVERY
 CAMDEN SHOW
 INTERSECTION, 2017
 15/12/17

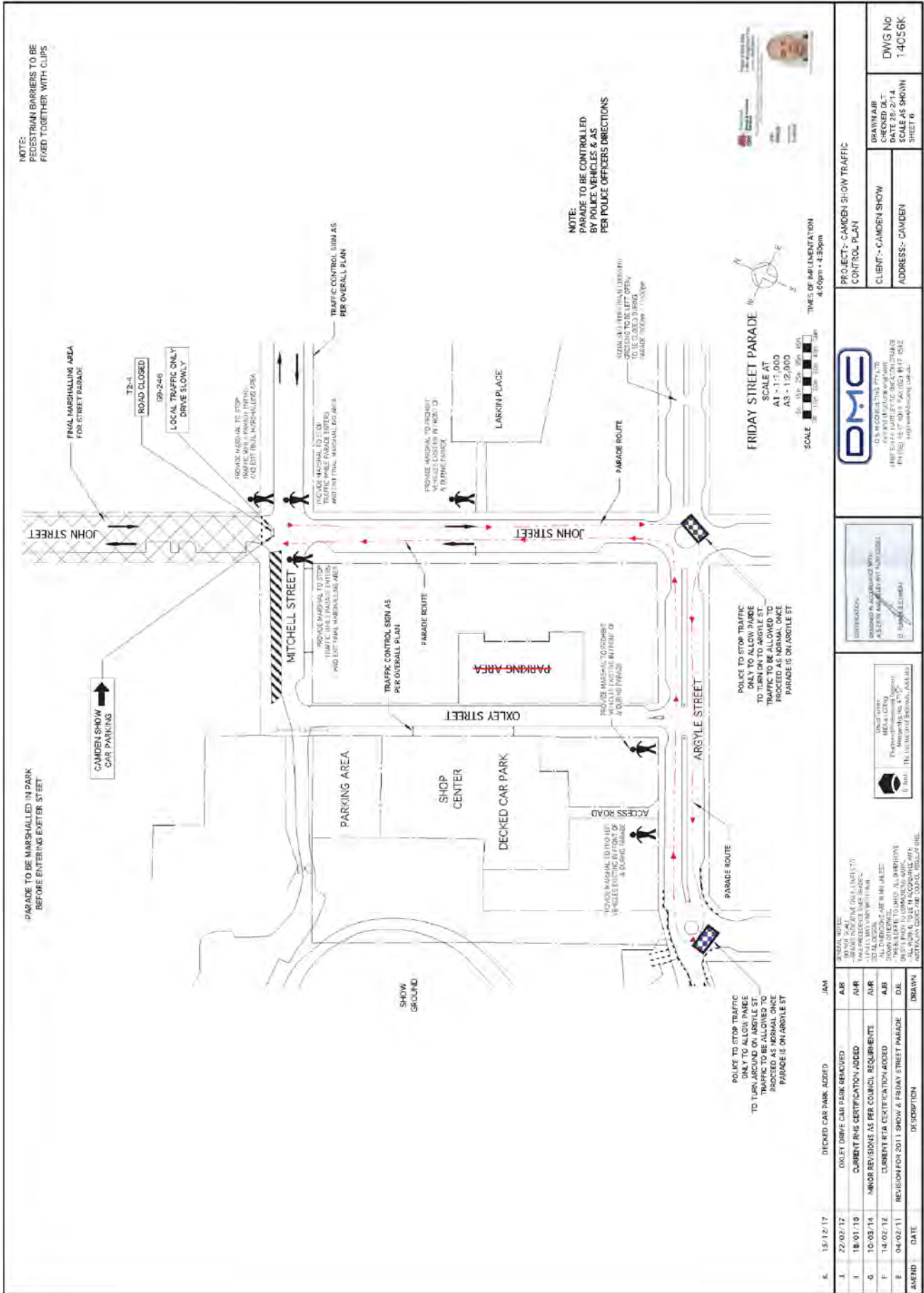
- NO CHANGING OF THE TRAFFIC SIGNALS
- NO STOPPING
- ONLY DRIVE CAR PARK REMOVED
- CURRENT PKG CERTIFICATION AIDED
- MINOR REVISIONS AS PER COUNCIL REQUIREMENTS
- CURRENT RTA CERTIFICATION AIDED
- REVISION FOR 2011 SHOW & FRIDAY STREET PARADE

REV	DATE	DESCRIPTION	DRAWN
K	15/12/17	NO CHANGE TO SHEET 3	JAV
J	22/02/17		AJR
I	18/01/16		AMR
G	10/03/14		AMR
F	14/02/12		AMR
E	04/02/11		DIL





K. 13/12/17		NO CHANGE TO SHEET 5		JAM	REVISIONS TO: TO THE U.K. TO BE RECEIVED FROM LOCAL TRAFFIC CONTROL OFFICERS WITHIN THE LOCAL TRAFFIC CONTROL AREA. SET DOWN & PICK UP AREA FOR VEHICLES TO BE USED FOR THE CAMDEN SHOW. ALL WORK TO BE IN ACCORDANCE WITH THE U.K. ROADWORKING REGULATIONS. TO BE IN ACCORDANCE WITH THE U.K. ROADWORKING REGULATIONS.
J	22/02/17	AMR	ONLY DRIVE CAR PARK REMOVED	AMR	DRAWN BY: JAM CHECKED BY: AMR DATE: 13/12/17
I	18/07/16	AMR	CURRENT RIBS CERTIFICATION ADDED	AMR	PROJECT: CAMDEN SHOW TRAFFIC CONTROL PLAN CLIENT: CAMDEN SHOW ADDRESS: CAMDEN
B	10/03/14	AMR	MAJOR REVISIONS AS PER COUNCIL REQUIREMENTS	AMR	DRAWN BY: AMR DATE: 10/03/14 SCALE AS SHOWN SHEET 5
F	14/02/12	AMR	CURRENT RIBS CERTIFICATION ADDED	AMR	PROJECT: CAMDEN SHOW TRAFFIC CONTROL PLAN CLIENT: CAMDEN SHOW ADDRESS: CAMDEN
E	04/02/11	DUE	REVISION FOR 2011 SHOW AT FRIAY STREET PARADE	DUE	PROJECT: CAMDEN SHOW TRAFFIC CONTROL PLAN CLIENT: CAMDEN SHOW ADDRESS: CAMDEN
AMEND	DATE	BY	DESCRIPTION	DRAWN	PROJECT: CAMDEN SHOW TRAFFIC CONTROL PLAN CLIENT: CAMDEN SHOW ADDRESS: CAMDEN





LOCAL TRAFFIC COMMITTEE

LTC14

SUBJECT: RICHARDSON ROAD, SPRING FARM - SIGNAGE, LINEMARKING AND DEVICES ASSOCIATED WITH THE DEVELOPMENT OF A CHILDCARE CENTRE AT 33 ESKDALE CLOSE, NARELLAN VALE

FROM: Manager Assets, Design & Traffic Services

TRIM #: 18/72878

ELECTRONIC MEETING ITEM DATE: 21 February 2018

PURPOSE OF REPORT

To document approval previously provided by the Local Traffic Committee through an Electronic Meeting for a signage and linemarking plan associated with the development of a childcare centre at 33 Eskdale Close, Narellan Vale.

MAIN REPORT

A signage and linemarking plan has been received by Council for the development of childcare centre at 33 Eskdale Close, Narellan Vale. The location is highlighted on **Attachment 1**. This is related to DA number DA/2015/910.

The proposed centre will have parent set-down and pick up from the Richardson Road frontage and is accessed via an approved 6 metre ingress and egress driveway. Part of the Development Consent conditions will require a concrete median to be constructed on Richardson Road to restrict this driveway to be left in and out only. Further, No Stopping restrictions must also be provided along the Richardson Road frontage to ensure that this area is clear of parked vehicles.

Engineering Drawing No. 15568J prepared by DMC Consulting provides details of the proposed signage, linemarking and devices (**Attachment 2**). The plan is considered to be in accordance with Austroads, Australian Standards and RMS supplements for the placement of regulatory signage and it is recommended that LTC supports the proposed measures.

It should be noted that in December 2017, the Local Traffic Committee concurred to signage, marking and device for upgrades of Richardson Road between Welling Drive and Liz Kernohan Drive. The implementation of the signage, marking and devices associated with these upgrade works will be coordinated with the proposed childcare centre works.

Electronic Meeting Reference	Agreed recommendation of the Local Traffic Committee
2018/07	<p>The Local Traffic Committee recommends that Council, on Richardson Road, approves the regulatory signage, linemarking and devices associated with the development of a childcare centre at 33 Eskdale Close, Narellan Vale as shown on the Engineering Drawing 15568J subject to:</p> <p style="padding-left: 40px;">i.the installation being completed by the applicant at its cost;</p>

-
- | | |
|--|--|
| | <ul style="list-style-type: none">ii. all signage being sign size A; andiii. street lighting levels for devices being in accordance with Australian Standard AS/NZS 1158, subject to further Council approval of the lighting design. |
|--|--|

This recommendation was supported unanimously by the four voting members.

This recommendation has been resolved by a Council Officer under Delegated Authority.

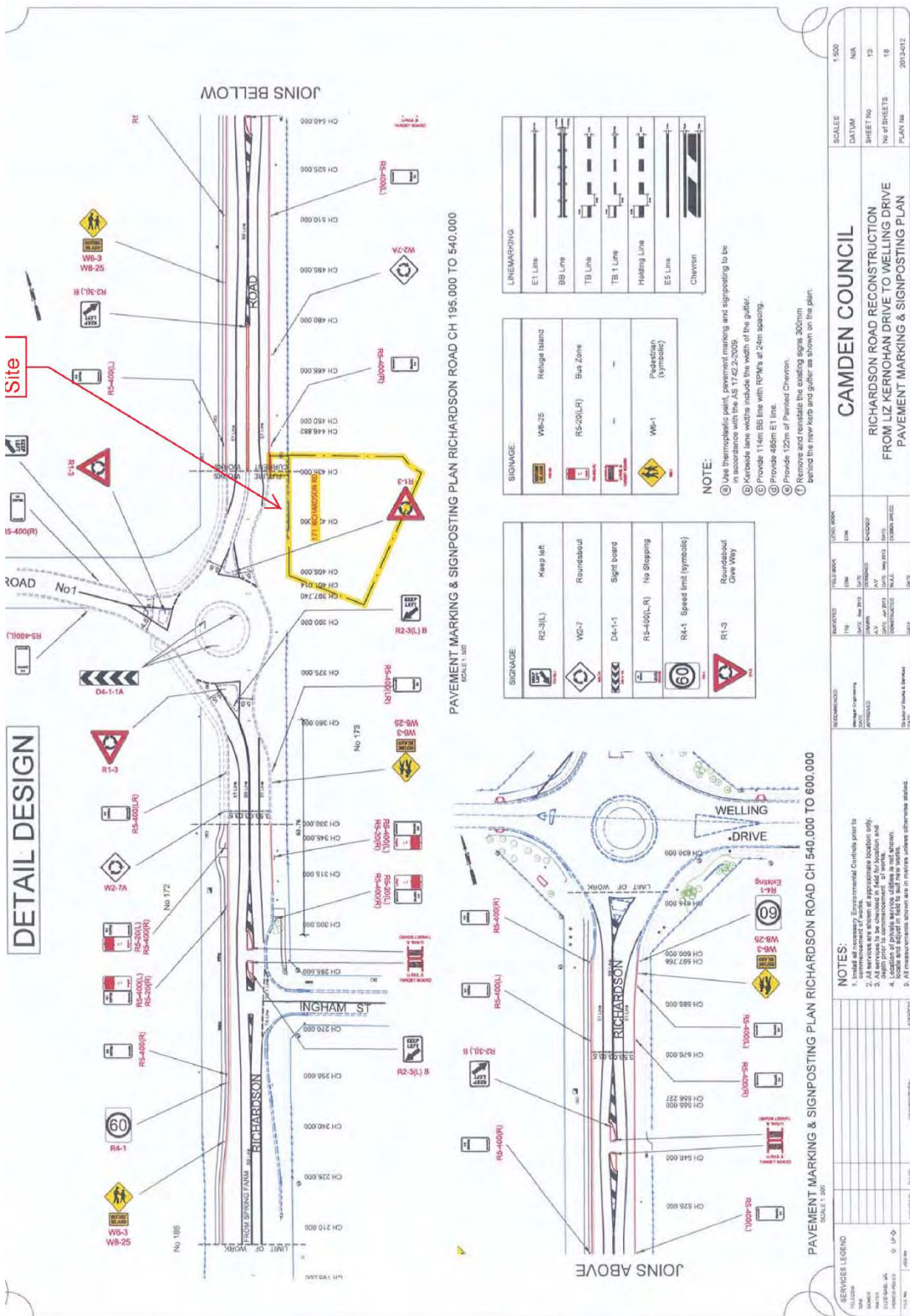
RECOMMENDED

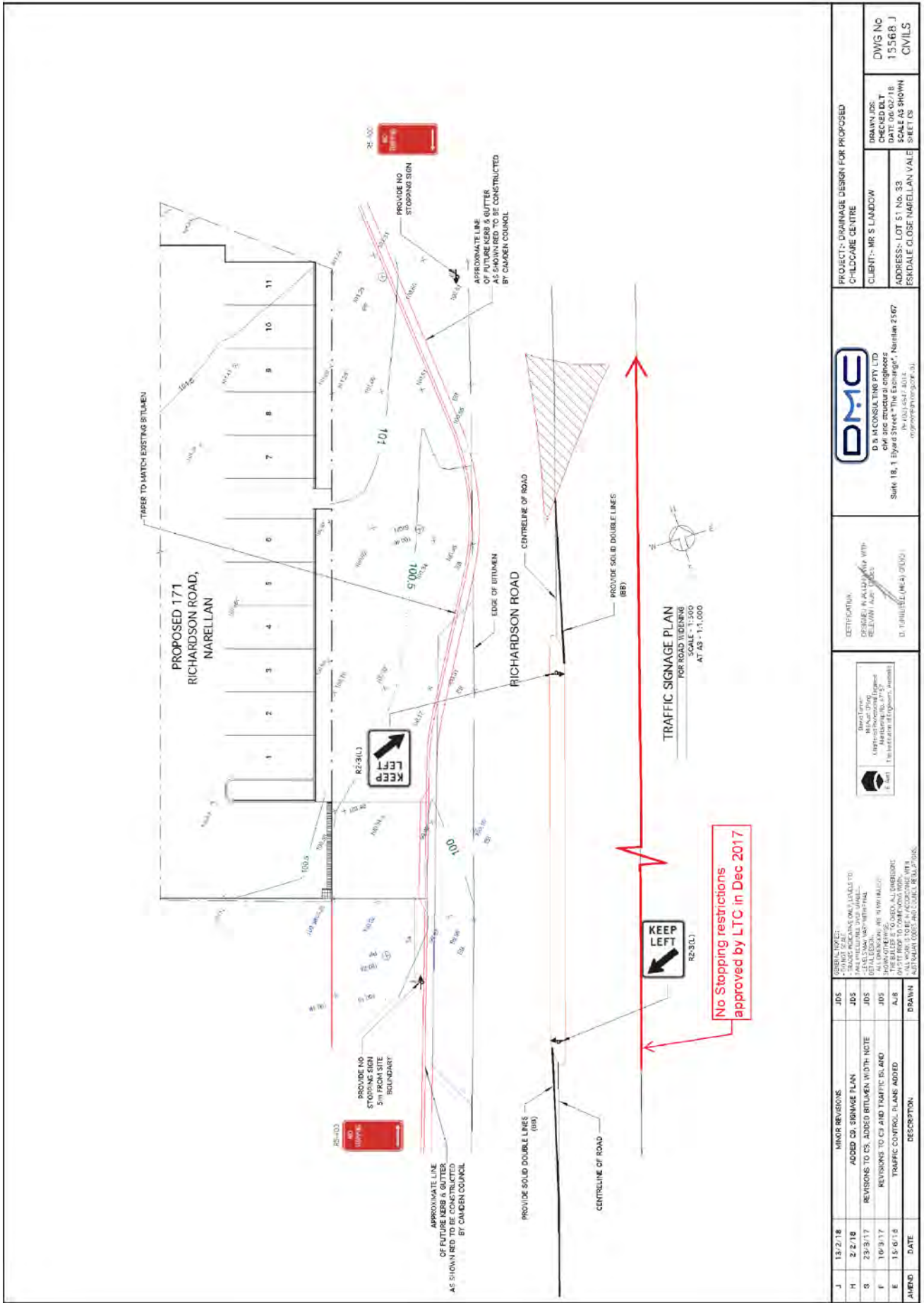
That Council receives and notes the report on Richardson Road, Spring Farm – Signage, Linemarking and Devices associated with the Development of a Childcare Centre at 33 Eskdale Close, Narellan Vale.

ATTACHMENTS

1. Site Location - Proposed Childcare Centre
2. Signage and Linemarking Plan - Richardson Road, Spring Farm







AMEND	DATE	DESCRIPTION	DRAWN	DATE	DESCRIPTION
J	13/2/18	MINOR REVISIONS	JDS		
H	2/2/18	ADDED CS SIGNAGE PLAN	JDS		
G	23/3/17	REVISIONS TO CS, ADDED BITUMEN WIDTH NOTE	JDS		
F	10/3/17	REVISIONS TO CS AND TRAFFIC ISLAND	JDS		
E	15/6/18	TRAFFIC CONTROL PLANS ADDED	A/B		

<p>AMEND TO BE NOTED:</p> <ul style="list-style-type: none"> TRAFFIC CONTROL PLANS ADDED TO ALL APPROVED TRAFFIC CONTROL PLANS. ALL WORK TO BE IN ACCORDANCE WITH AUSTRALIAN ROAD AND COUNCIL REGULATIONS. 	<p>DESIGNER: D. J. HARRIS (MCA 17003)</p> <p>CHECKED: M. J. LINDSEY (MCA 17003)</p> <p>SCALE: 1:500</p>	<p>PROJECT: DRAINAGE DESIGN FOR PROPOSED CHALCARE CENTRE</p> <p>CLIENT: MR S LAMOND</p> <p>ADDRESS: LOT 51 No. 38 (ESDALE CLOSE NARELLAN VALE) SHEET 03</p>	<p>DRAWN: JDS</p> <p>CHECKED: DLT</p> <p>DATE: 06/02/18</p> <p>SCALE: AS SHOWN</p> <p>SHEET: 03</p>	<p>DWG No: 15.568 J</p> <p>CIVILS</p>
---	--	--	--	---

<p>COMPANY: D.M.C. CONSULTING PTY LTD</p> <p>ADDRESS: Suite 18, 1 Elyard Street "The Exchange", Narellan 2567</p> <p>CONTACT: (02) 4547 4014</p> <p>WEBSITE: www.dmc.com.au</p>	<p>CERTIFICATION: DESIGNER (MCA 17003) RELEVANT</p> <p>RELEVANT: AUST. ROAD REGULATIONS</p>
---	---

LOCAL TRAFFIC COMMITTEE

LTC15

SUBJECT: CURLEWIS STREET, GLEDWOOD HILLS - SIGNAGE, LINEMARKING AND DEVICES ASSOCIATED WITH THE DEVELOPMENT OF GLEDWOOD HILLS, STAGE 2

FROM: Manager Assets, Design & Traffic Services

TRIM #: 18/73335

ELECTRONIC MEETING ITEM DATE: 21 February 2018

PURPOSE OF REPORT

To document approval previously provided by the Local Traffic Committee through an Electronic Meeting for a signage and linemarking plan associated with the construction of new road associated with the development of Gledswood Hills, Stage 2.

MAIN REPORT

A signage and linemarking plan has been received by Council for the construction of new roads associated with the development of Gledswood Hills, Stage 2. The location is highlighted on **Attachment 1**. This is related to DA number DA/2014/1173/1.

The Engineering Drawing No. C119 Rev. C prepared by Diversi Consulting provides details of the proposed signage and linemarking (**Attachment 2**). The plan is considered to be in accordance with Austroads, Australian Standards and RMS supplements for the placement of regulatory signage and linemarking and it is recommended that LTC supports the proposed measures.

Electronic Meeting Reference	Agreed recommendation of the Local Traffic Committee
2018/08	<p>The Local Traffic Committee recommends that Council on Curlewis Street, Gledswood Hills approves the regulatory signage, line marking and devices associated with the subdivision of Gledswood Hills, Stage 2 as shown on the Engineering Drawing No. C119 Rev. C subject to:</p> <ul style="list-style-type: none"> i. the installation being completed by the applicant at their cost; ii. all signage being sign size A; and iii. street lighting levels for devices being in accordance with Australian Standard AS/NZS 1158, subject to further Council approval of the lighting design

This recommendation was supported unanimously by the four voting members.

This recommendation has been resolved by a Council Officer under Delegated Authority.

RECOMMENDED



That Council receives and notes the report on Curlewis Street, Gledswood Hills – Signage, Linemarking and Devices associated with the Development of Gledswood Hills, Stage 2.

ATTACHMENTS

1. Site Location - Curlewis Street, Gledswood Hills
2. Signage and Linemarking Plan - Curlewis Street, Gledswood Hills



Camden Council
 70 Central Ave
 ORAN PARK NSW 2570
 Telephone: 02 4654 7777
 Fax: 02 4654 7829
 Email: mail@camden.nsw.gov.au

 **Subject Site**

Map Scale: 1:1549
 Projection: GDA94 / MGA zone 56
 Date: 21/02/2018 10:03 AM



DISCLAIMER: This map has been prepared from Council records by the Land Information Section. If you intend to rely on this information you should have it verified first. Camden Council accepts no responsibility for any errors or omissions. This map should not be reproduced without the permission of Camden Council.

LOCAL TRAFFIC COMMITTEE

LTC16

SUBJECT: KINGSMAN AVENUE, ELDESLIE - SIGNAGE, LINEMARKING AND DEVICES ASSOCIATED WITH THE DEVELOPMENT OF ELDESLIE, STAGES 3, 4 AND 5

FROM: Manager Assets, Design & Traffic Services

TRIM #: 18/73414

ELECTRONIC MEETING ITEM DATE: 21 February 2018

PURPOSE OF REPORT

To document approval previously provided by the Local Traffic Committee through an Electronic Meeting for signage and linemarking plans associated with the construction of new roads associated with the development of Elderslie, Stages 3, 4 and 5.

MAIN REPORT

Signage and linemarking plans have been received by Council for the construction of new roads associated with Elderslie, Stages 3, 4 and 5. The location is highlighted on **Attachment 1**.

The Engineering Plan No. 9908/SK504 Rev.A, 110001/CC38 Rev.A and 110001/CC23 Rev.E prepared by AVJennings consulting provides details of the proposed signage and line marking (Attachment 2). The plans are considered to be in accordance with Austroads, Australian Standards and RMS supplements for the placement of regulatory signage and linemarking and it is recommended that LTC supports the proposed measures.

Electronic Meeting Reference	Agreed recommendation of the Local Traffic Committee
2018/09	<p>The Local Traffic Committee recommends that Council on and in the vicinity of Kingsman Avenue, Elderslie approves the regulatory signage, line marking and devices associated with the subdivision of Elderslie, Stages 3, 4 and 5 as shown on the Engineering Plan No. 9908/SK504 Rev.A, 110001/CC38 Rev.A and 110001/CC23 Rev.E subject to:</p> <ul style="list-style-type: none"> i. the installation being completed by the applicant at its cost; ii. all signage being sign size A; and iii. street lighting levels for devices being in accordance with Australian Standard AS/NZS 1158, subject to further Council approval of the lighting design.

This recommendation was supported unanimously by the four voting members.

This recommendation has been resolved by a Council Officer under Delegated Authority.



RECOMMENDED

That Council receives and notes the report on Kingsman Avenue, Elderslie – Signage, Linemarking and Devices associated with the Development of Elderslie, Stages 3, 4 and 5.

ATTACHMENTS

1. Site Location - Kingsman Avenue, Elderslie
2. Signage and Linemarking Plans - Kingsman Avenue, Elderslie



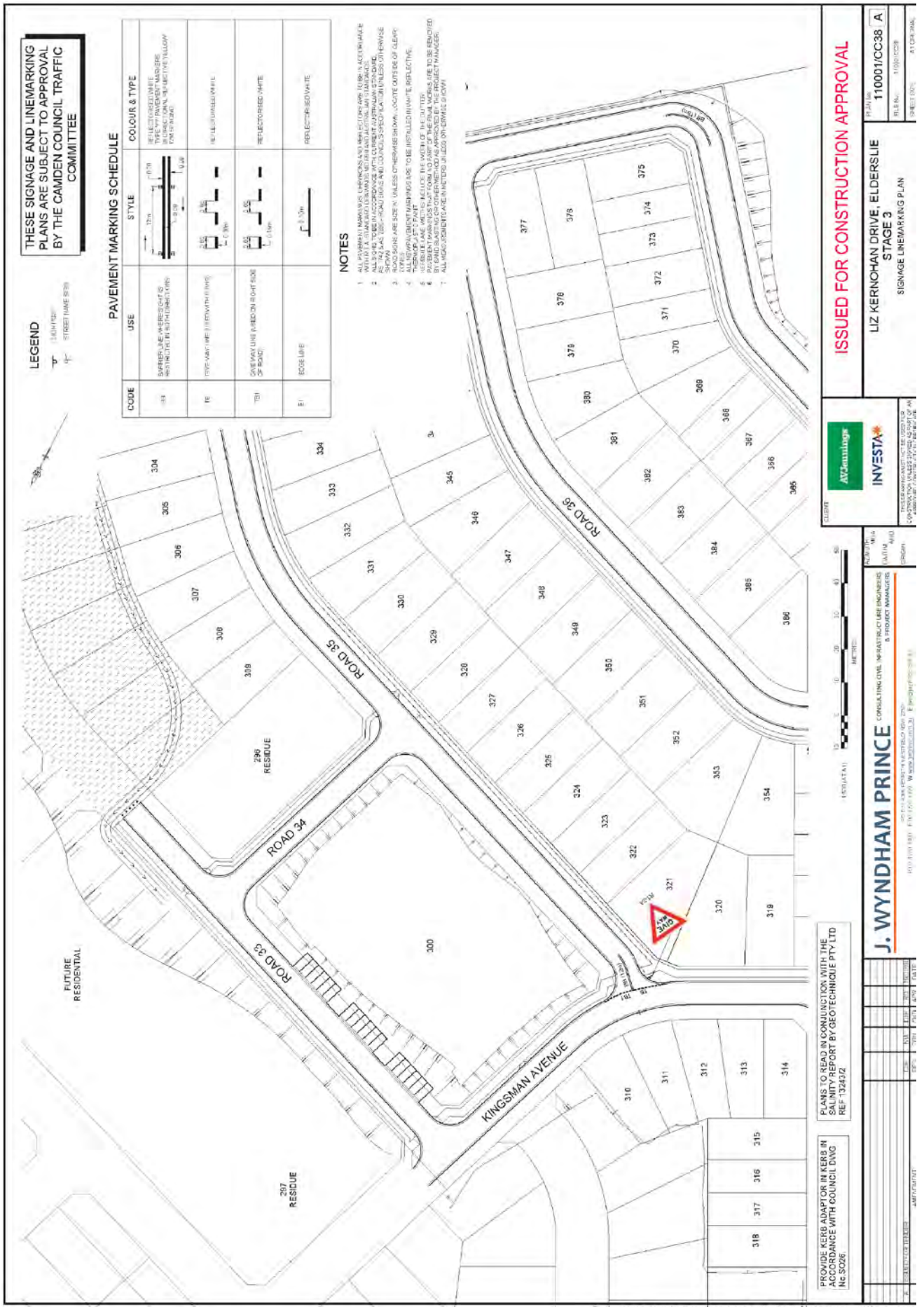
Camden Council
 70 Central Ave
 ORAN PARK NSW 2570
 Telephone: 02 4654 7777
 Fax: 02 4654 7829
 Email: mail@camden.nsw.gov.au

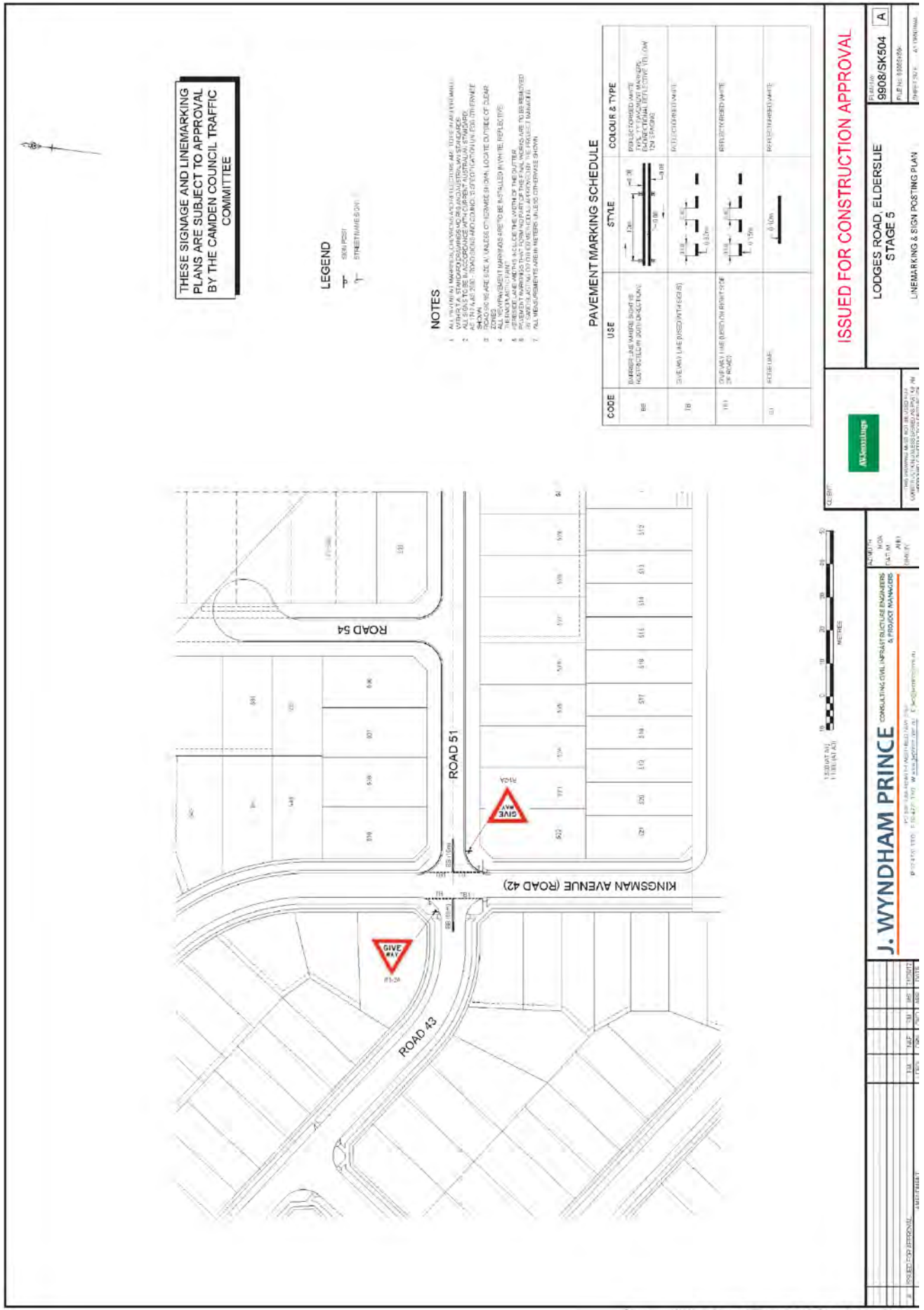
Subject Site

Map Scale: 1:3782
 Projection: GDA94 / MGA zone 56
 Date: 21/02/2018 10:57 AM



DISCLAIMER: This map has been prepared from Council records by the Land Information Section. If you intend to rely on this information you should have it verified first. Camden Council accepts no responsibility for any errors or omissions. This map should not be reproduced without the permission of Camden Council.





THESE SIGNAGE AND LINEMARKING PLANS ARE SUBJECT TO APPROVAL BY THE CAMDEN COUNCIL TRAFFIC COMMITTEE

LEGEND
 SIGN POST
 STREET NAME SIGN

NOTES
 1. ALL SIGNAGE MARKERS, OR SIGNAGE ELEVATIONS ARE TO BE AS SHOWN UNLESS OTHERWISE SPECIFIED.
 2. ALL SIGNAGE MARKERS, OR SIGNAGE ELEVATIONS ARE TO BE AS SHOWN UNLESS OTHERWISE SPECIFIED.
 3. ALL SIGNAGE MARKERS, OR SIGNAGE ELEVATIONS ARE TO BE AS SHOWN UNLESS OTHERWISE SPECIFIED.
 4. ALL SIGNAGE MARKERS, OR SIGNAGE ELEVATIONS ARE TO BE AS SHOWN UNLESS OTHERWISE SPECIFIED.
 5. ALL SIGNAGE MARKERS, OR SIGNAGE ELEVATIONS ARE TO BE AS SHOWN UNLESS OTHERWISE SPECIFIED.
 6. ALL SIGNAGE MARKERS, OR SIGNAGE ELEVATIONS ARE TO BE AS SHOWN UNLESS OTHERWISE SPECIFIED.
 7. ALL SIGNAGE MARKERS, OR SIGNAGE ELEVATIONS ARE TO BE AS SHOWN UNLESS OTHERWISE SPECIFIED.

PAVEMENT MARKING SCHEDULE

CODE	USE	STYLE	COLOUR & TYPE
BB	BARREL LANE MARKING (RIGHT SIDE) AND BARRIERS (LEFT SIDE) (SEE NOTE 1)		REFLECTORISED WHITE POLYURETHANE MARKING WITH YELLOW REFLECTIVE THERMOPLASTIC
BB	BARREL LANE MARKING (LEFT SIDE) AND BARRIERS (RIGHT SIDE) (SEE NOTE 1)		REFLECTORISED WHITE POLYURETHANE MARKING WITH YELLOW REFLECTIVE THERMOPLASTIC
BB	BARREL LANE MARKING (RIGHT SIDE) AND BARRIERS (LEFT SIDE) (SEE NOTE 1)		REFLECTORISED WHITE POLYURETHANE MARKING WITH YELLOW REFLECTIVE THERMOPLASTIC
BB	BARREL LANE MARKING (LEFT SIDE) AND BARRIERS (RIGHT SIDE) (SEE NOTE 1)		REFLECTORISED WHITE POLYURETHANE MARKING WITH YELLOW REFLECTIVE THERMOPLASTIC
BB	BARREL LANE MARKING (RIGHT SIDE) AND BARRIERS (LEFT SIDE) (SEE NOTE 1)		REFLECTORISED WHITE POLYURETHANE MARKING WITH YELLOW REFLECTIVE THERMOPLASTIC
BB	BARREL LANE MARKING (LEFT SIDE) AND BARRIERS (RIGHT SIDE) (SEE NOTE 1)		REFLECTORISED WHITE POLYURETHANE MARKING WITH YELLOW REFLECTIVE THERMOPLASTIC

ISSUED FOR CONSTRUCTION APPROVAL

ALK Associates

LOGDES ROAD, ELDERSLIE STAGE 5

LINE MARKING & SIGN POSTING PLAN

PROJECT NO: 9808/SK504

DATE: 20/03/2018

SCALE: 1:100

PROJECT NO: 9808/SK504

DATE: 20/03/2018

SCALE: 1:100

